

AN ORDINANCE ANNEXING CERTAIN TERRITORY TO THE  
CITY OF URBANA, ILLINOIS

WHEREAS, it appears to the City Council of the City of Urbana, Illinois that a petition was filed with the City Clerk of the City of Urbana, Illinois on the 21<sup>st</sup> day of February, A.D. 1966, requesting the annexation of the territory hereinafter described, which said petition was signed under oath by all of the owners of record of real estate, there being no electors residing in said territory, and

WHEREAS, at least two-thirds of the aldermen are of the opinion that it would be for the best interests of the people of the City of Urbana, Illinois that said territory be annexed to, and made a part of the city limits of said City.

THEREFORE, BE IT ORDAINED BY THE CITY COUNCIL OF THE CITY OF URBANA, ILLINOIS:

SECTION 1. That the territory described as follows, to-wit:

All that part of the Northeast Quarter of Section 16, Township 19 North, Range 9 East of the Third Principal Meridian, in Champaign County, Illinois, lying East of the center line of Lierman Avenue, in Champaign County, Illinois, excepting therefrom those portions of the above described tract heretofore annexed to the City of Urbana, Illinois, by ordinances duly adopted by the City Council of said City on November 4, 1957 and May 16, 1960.

be, and the same is hereby annexed to, and shall hereafter be a part of the City of Urbana, Illinois, and that the corporate limits of said City be, and the same shall be changed so as to include said territory within the corporate limits of said City.

SECTION II. The City Clerk of the City of Urbana, Illinois, shall record with the Recorder of Deeds of the County of Champaign, Illinois, a copy of this ordinance together with an accurate map of the annexed territory.

Adopted by the City Council of the City of Urbana, Illinois, this 21<sup>st</sup> day of February A.D. 1966.

Duane Eckerty  
DUANE ECKERTY, City Clerk

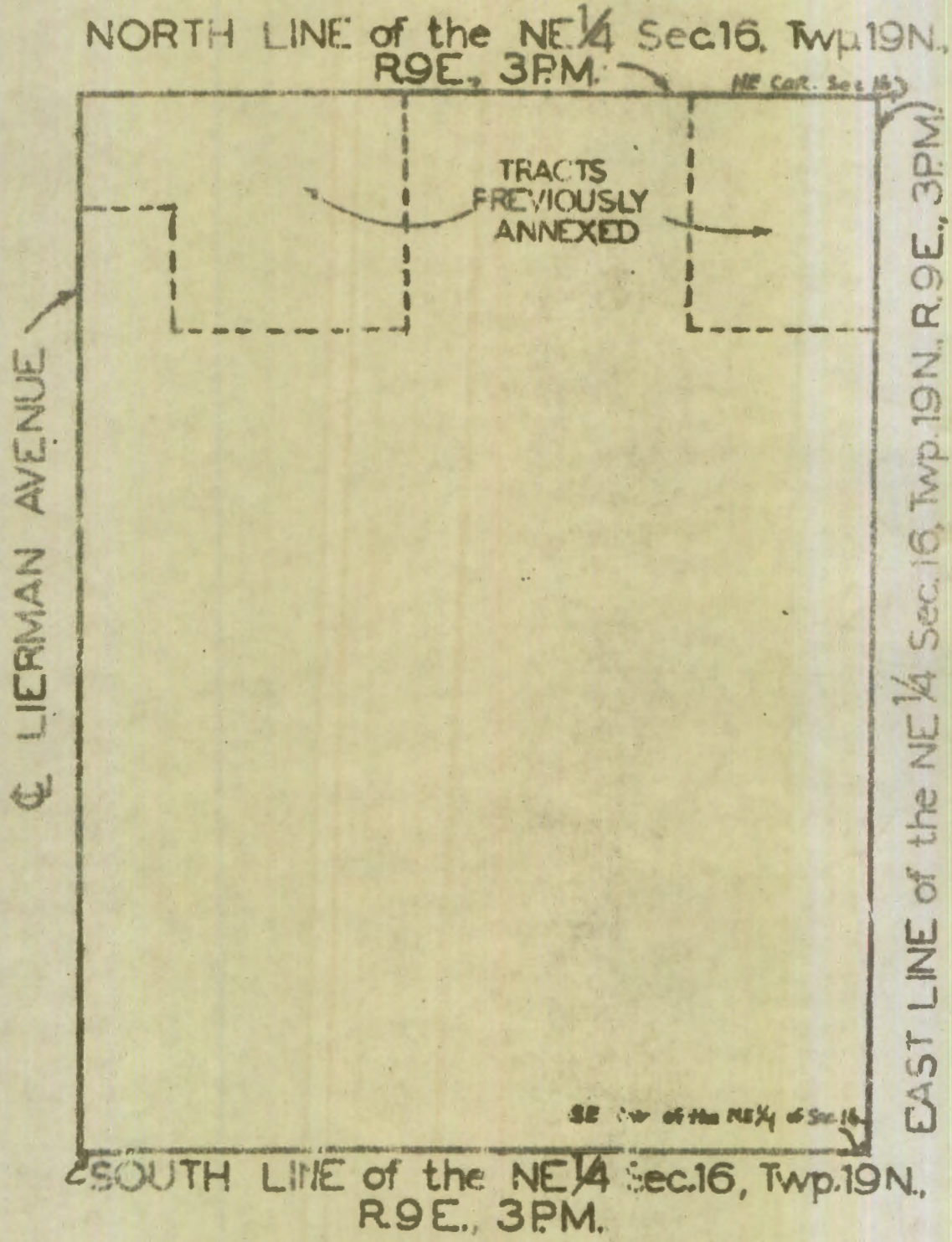
Approved by the Mayor this 21<sup>st</sup> day of February A.D. 1966.

Stanley B. Weaver  
STANLEY B. WEAVER, Mayor



ANNEXATION PLAT OF

All that part of the Northeast Quarter of Section 16, Township 19 North, Range 9 East of third Principal Meridian, lying East of the center line of Lierman Avenue, situated in the County of CHAMPAIGN, STATE of ILLINOIS.



BY: Carl W. Freeman  
City Engineer  
Urbana, Illinois

February 23 1966

SCALE  
1"=400'