

AN ORDINANCE ANNEXING CERTAIN TERRITORY
TO THE CITY OF URBANA, ILLINOIS

WHEREAS, the following described unincorporated territory contains less than sixty acres and is wholly bounded by the municipality of the City of Urbana, Illinois, and land owned by the State of Illinois.

Said surrounded land is described as follows:

Lots Nos. 3, 5, 6, 7, 8, 9, 10, 11, 12, 13, 14, 15, 16, 17, 18, 19, 20, 40, 41, 42, 49, 50, 51, 52, 53, 54, 55, 56, 57, 58, 59, 60, 61, 62, 63, 64, 65, 66, 67, 68, 121, 22, 23, 24, 25, 26, 27, 28, 29, 30, 31, 69, 70, 71, 91, 72, 73, 74, 75, 76, and 77 of University Downs Addition to the City of Urbana;

And a tract of real estate described as follows:

Commencing at the northeast corner of Lot 15 of University Downs; thence southerly along the east lines of Lots 15, 16, 17, 18, 19 and 20 of said University Downs Addition; thence eastward to the southwest corner of Lot 26 of said University Downs addition; thence northward along the west lines of Lots 26, 25, 24, 23, and 22 of said University Downs Addition to the northwest corner of said Lot 22; thence westward to the northeast corner of said Lot 15;

Grange Drive from G. Huff Drive to the south line of said University Downs Addition; G. Huff Drive from Race Street to Boudreau Drive; Boudreau Drive from G. Huff Drive to Burlison Drive; Burlison Drive from Mumford Drive to Boudreau Drive; Mumford Drive from Race Street to Burlison Drive; all in said University Downs Addition; Race Street from the middle of G. Huff Drive to the south line of Ennis Ridge Tenth Subdivision;

All situated in the west half of the east half of Section 20 in Township 19 North, Range 9 East of the Third Principal Meridian, in Champaign County, Illinois.

BE IT ORDAINED BY THE CITY COUNCIL OF THE CITY OF URBANA, ILLINOIS, that said above described territory is hereby annexed as a part of the City of Urbana, Illinois.

ADOPTED by the City Council of the City of Urbana, Illinois, this 20th day of December, 1965.

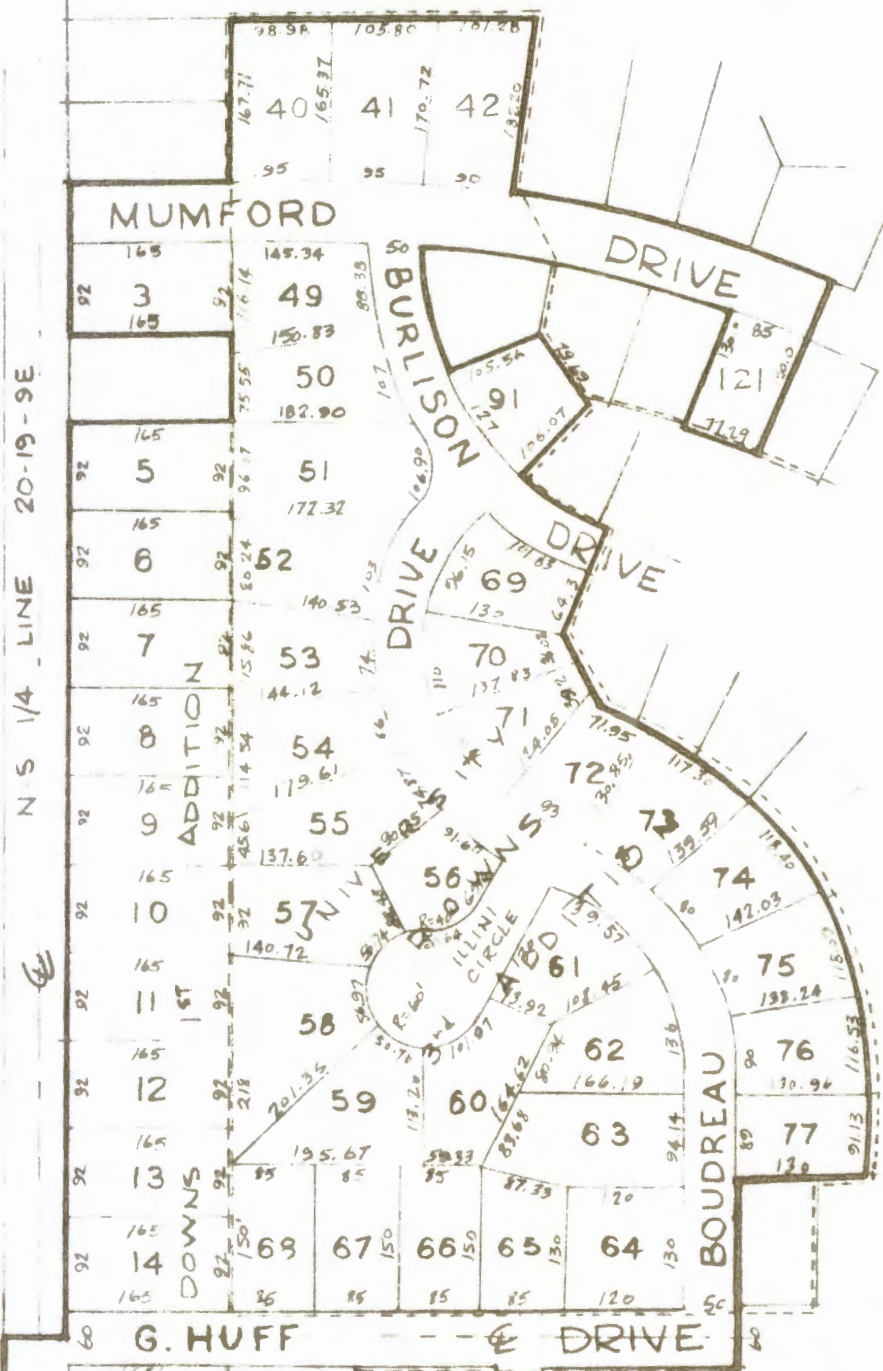
Duane Eckert
City Clerk

APPROVED by the Mayor of the City of Urbana, Illinois, this 20th day of December, 1965.

Stanley B. Heaver
Mayor

PLAT OF TERRITORY ANNEXATION TO THE CITY OF URBANA, ILLINOIS.

ALL LOTS, TRACT, AND STREETS IN THE UNIVERSITY DOWNS ADDITIONS ARE SITUATED IN THE WEST HALF OF THE EAST HALF OF SECTION 20 IN TOWNSHIP 19 NORTH, RANGE 9 EAST OF THE THIRD PRINCIPAL MERIDIAN, IN CHAMPAIGN COUNTY, ILLINOIS.



UNIVERSITY
DOWNS
4th ADDITION

RACE ST.

G. HUFF DRIVE



1" = 200'

ENNIS RIDGE 10th SUBDIVISION

CARL W. FREEMAN
CITY ENGINEER
DECEMBER 22, 1965

SOUTH LINE OF ENNIS RIDGE 10th SUB