

AN ORDINANCE ANNEXING CERTAIN TERRITORY
TO THE CITY OF URBANA, ILLINOIS

WHEREAS, it appears to the City Council of the City of Urbana, Illinois, that a petition was filed with the City Clerk of the City of Urbana, Illinois, on the 6th day of December, A.D. 1965, requesting the annexation of the territory hereinafter described, which said petition was signed under oath by all of the owners of record of real estate and ~~and~~ ^{there are no} electors residing in said territory, and,

WHEREAS, at least two-thirds of the aldermen are of the opinion that it would be for the best interests of the people of the City of Urbana, Illinois, that said territory be annexed to and made a part of the City Limits of said City.

THEREFORE, BE IT ORDAINED BY THE CITY COUNCIL OF THE CITY OF URBANA, ILLINOIS:

SECTION I. That the territory described as follows to-wit:

Ennis Ridege 10th Subdivision, a subdivision of Champaign County, Illinois;

be, and the same is hereby annexed to, and shall hereafter be a part of the City of Urbana, Illinois, and that the corporate limits of said City be, and the same shall be changed so as to include said territory within the corporate limits of said City.

SECTION II. The City Clerk of the City of Urbana, Illinois, shall record with the Recorder of Deeds of the County of Champaign, Illinois, a copy of this ordinance, together with an accurate map of the annexed territory.

ADOPTED by the City Council of the City of Urbana, Illinois, this 6th day of December A.D. 1965.

Duane C. Kuty
CITY CLERK

APPROVED by the Mayor this 6th day of December A.D. 1965.

Stanley B. Beaver
MAYOR

STATE OF ILLINOIS)
COUNTY OF CHAMPAIGN) SS.

I, DUANE ECKERTY, City Clerk of the City of Urbana, Illinois, and keeper of the records, files and seal of said City, do hereby certify that the foregoing is a true and exact copy of an ordinance entitled "An Ordinance Annexing Certain Territory to the City of Urbana, Illinois", adopted by the City Council of the City of Urbana, Illinois, on the 6th day of December A.D. 1965, as shown on the records and files in my office remaining.

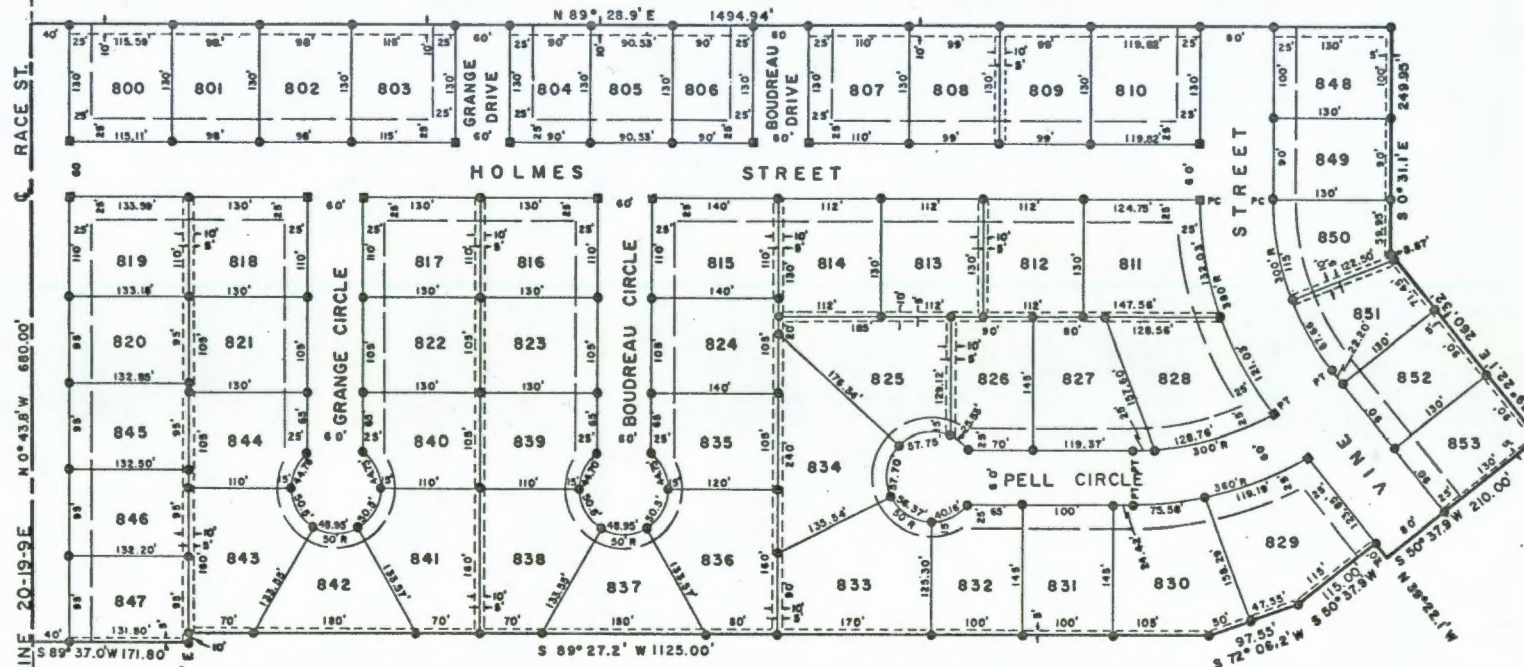
Given under my hand and seal of said City of Urbana, Illinois, this 7th day of December A.D. 1965.



Duane Eckerty

CITY CLERK

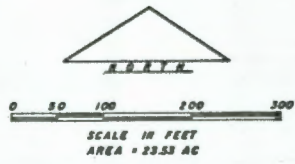
ENNIS RIDGE TENTH SUBDIVISION CHAMPAIGN COUNTY, ILLINOIS



RACE ST.
 N-S 1/4 LINE
 20-19-9E
 N 0° 43' 5" W 680.00'
 S 89° 37.0' W 171.80'
 S 89° 38.8' E 140.00'
 S 89° 27.2' W 1125.00'

LEGEND

- IRON PIPE MONUMENTS
- CONCRETE MONUMENTS
- ▲ STONE FOUND
- UTILITY EASEMENT
- - - BUILDING SET-BACK LINE



LEGAL DESCRIPTION
 PART OF THE N 1/2 SE 1/4
 20-19-9E, 3 RD. P.M.
 CHAMPAIGN COUNTY, ILLINOIS

SPECIAL NOTE:

The area covered by this plat is within the corporate limits of Urbana, Illinois

No part of the area of this plat is within 500' of any surface drain or water course serving a tributary area of 640 acres or more


 CHARLES S. DANNER
 ILS 1470



APPROVED:
 THE PLAN COMMISSION OF THE CITY OF URBANA, ILLINOIS
 DATE _____ BY _____ CHAIRMAN

APPROVED:
 THE CITY COUNCIL OF THE CITY OF URBANA, ILLINOIS
 DATE December 6th BY _____ MAYOR

ATTEST: _____ CITY CLERK

APPROVED:
 DATE December 2, 1965 BY _____ CITY ENGINEER

CHARLES S. DANNER
 CONSULTING ENGINEER
 URBANA, ILLINOIS

6/16/56 - 49