

195

6162-39
X

AN ORDINANCE ANNEXING CERTAIN TERRITORY
TO THE CITY OF URBANA, ILLINOIS

WHEREAS, it appears to the City Council of the City of Urbana, Illinois, that a petition was filed with the City Clerk of the City of Urbana, Illinois on the 2nd day of October, A.D. 1961, requesting the annexation of the territory hereinafter described, which said petition was signed under oath by all of the owners of record of real estate and all of the electors residing in said territory, and,

WHEREAS, at least two-thirds of the aldermen are of the opinion that it would be for the best interests of the people of the City of Urbana, Illinois that said territory be annexed to and made a part of the City Limits of said City.

THEREFORE, BE IT ORDAINED BY THE CITY COUNCIL OF THE CITY OF URBANA, ILLINOIS.

SECTION I. That the territory described as follows to-wit:

Lot Number 1004, First Plat, of Country Squire Estates, in the County of Champaign, and State of Illinois.

be, and the same is hereby annexed to, and shall hereafter be a part of the City of Urbana, Illinois, and that the corporate limits of said City be, and the same shall be changed so as to include said territory within the corporate limits of said City.

SECTION II. The City Clerk of the City of Urbana, Illinois, shall record with the Recorder of Deeds of the County of Champaign, Illinois, a copy of this ordinance, together with an accurate map of the annexed territory.

Adopted by the City Council of the City of Urbana, Illinois, this 2nd day of October, A.D. 1961.

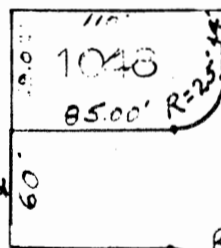
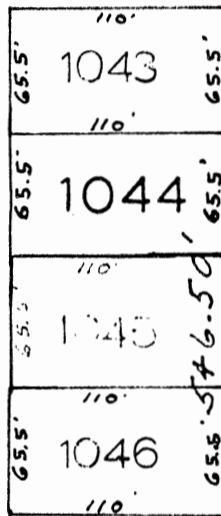
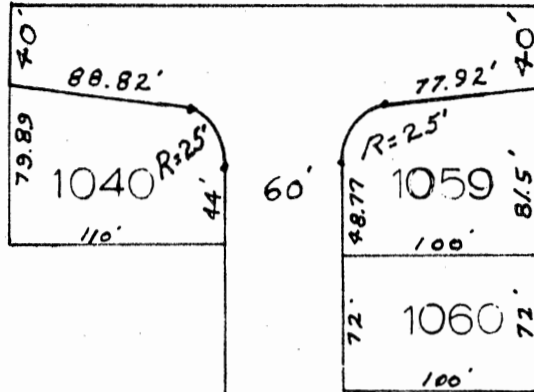

CITY CLERK

Approved by the Mayor this 2nd day of October, A.D. 1961.

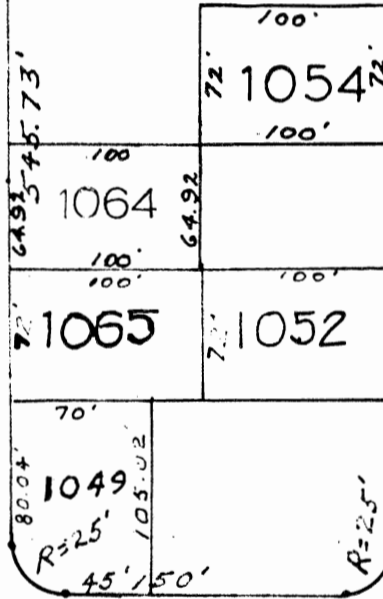

MAYOR

CERTAIN STREETS AND CERTAIN LOTS OF COUNTRY SQUIRES ESTATES II SUBDIVISION TO THE COUNTY OF CHAMPAIGN, ILLINOIS, SITUATED IN THE COUNTY OF CHAMPAIGN, STATE OF ILLINOIS.

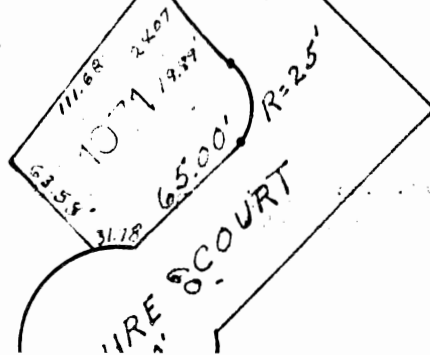
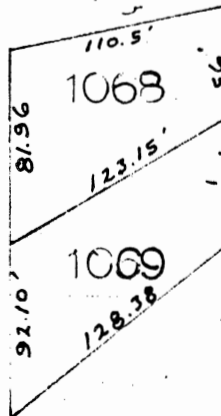
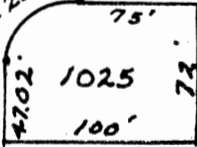
E. WASHINGTON STREET



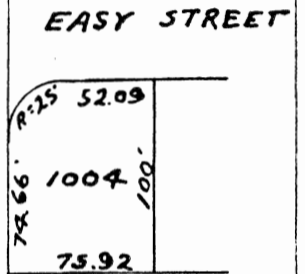
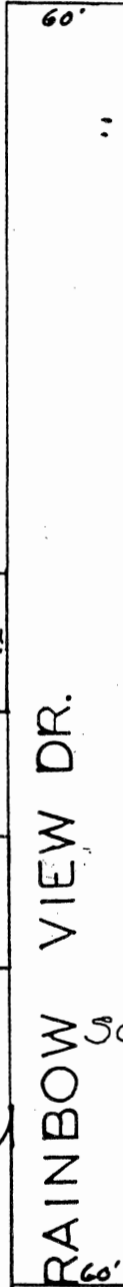
COUNTRY SQUIRE DRIVE



HUNTER STREET



WIRE COURT

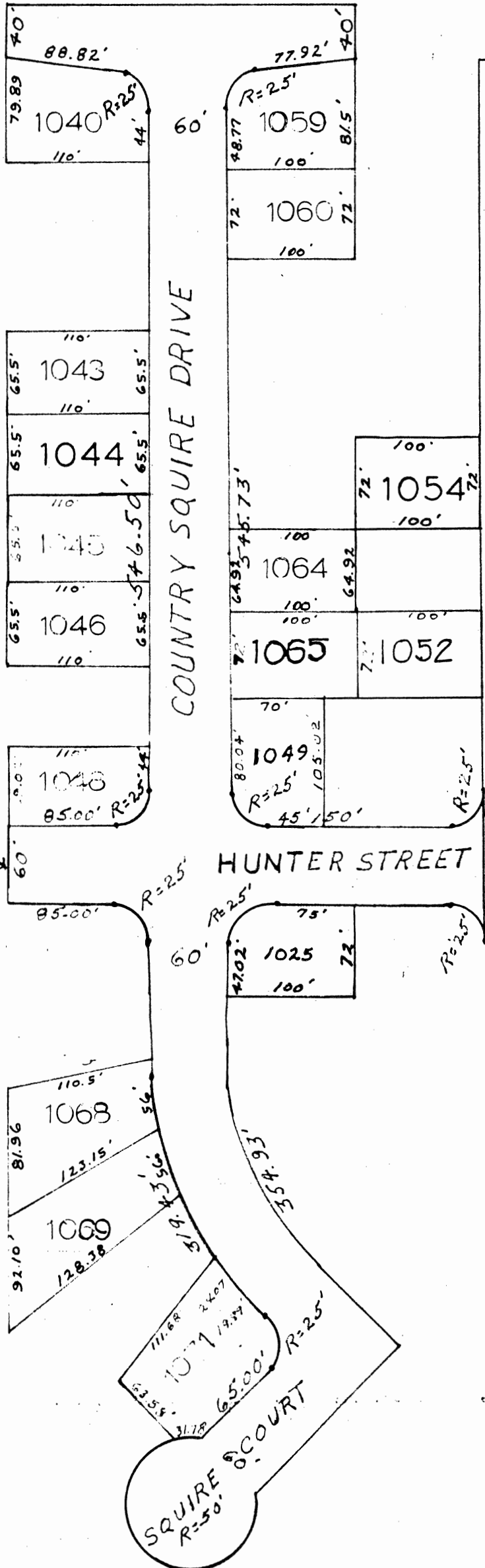


PRESENT CITY LIMITS

SCALE - 1" = 100'



PRESENT CITY LIMITS



RAINBOW VIEW DR.

EASY STREET

SCALE - 1" = 100'

BY: M. H. VICTOR
PLAT
RECORDED

October 21, 1931