



DEPARTMENT OF COMMUNITY DEVELOPMENT SERVICES

Planning Division

m e m o r a n d u m

TO: Mayor Laurel Lunt Prussing

FROM: Elizabeth H. Tyler, PhD., FAICP

DATE: July 31, 2014

SUBJECT: **Plan Case 2223-CP-14**, a request to adopt the Active Choices: Champaign County Greenways & Trails Plan as an amendment to the 2005 Urbana Comprehensive Plan.

Introduction and Background

The Urbana Zoning Administrator is requesting that the Urbana City Council adopt the Active Choices: Champaign County Greenways & Trails Plan as an agency plan to be referenced in the 2005 Urbana Comprehensive Plan and adopt the Future Conditions Map as Appendix C of the Comprehensive Plan. The Active Choices plan contains maps, goals and a projects list for development of off-street trails and greenways throughout Champaign County. The future trails map in this plan will replace Appendix C: Greenways and Trails Classification Map in the 2005 Comprehensive Plan as the guiding document for future off-street trails in Urbana.

The new Active Choices Plan replaces the 2004 Greenways and Trails Plan, which was incorporated into the 2005 Comprehensive Plan as an Agency Plan. Agency Plans are plans developed and approved by agencies outside of the City that may have an impact on how the City develops. Because the Greenways and Trails Classification Map found in the 2005 Comprehensive Plan is taken directly from the Greenways and Trails Plan, the revised map contained in the plan should be adopted as an amendment to the 2005 Comprehensive Plan.

The Active Choices Plan was compiled by the Champaign County Regional Planning Commission (RPC) over the course of two years. The process was guided by Greenways and Trails Plan Policy and Technical Committees, which consist of staff members from various municipalities, districts, and agencies throughout Champaign County, including staff from the City of Urbana. The RPC held four public workshops in various community locations in order to maximize opportunities for citizens to contribute to the plan.

The Urbana Plan Commission and City Council reviewed the draft Active Choices plan in November 2013. Subsequently, there was a thirty-day public review period, and the plan was then adopted by the Active Choices Policy Committee and submitted to the State of Illinois for comments. The State required certain changes to be integrated into the plan, and the plan has now been finalized.

Discussion

Plan Overview

The Active Choices Champaign County Greenways and Trails Plan is an update to the 2004 Champaign County Greenways and Trails Plan. The Active Choices Plan is a guiding framework for growing and enhancing the greenways and trails system throughout Champaign County. In this context, greenways mean “corridors of open land managed for conservation and/or recreation”. The “trails” part of Greenways and Trails refers to both natural trails (a type of greenway which can accommodate one or many types of non-automobile users) and bikeways (any road, street, path, or way that is specifically designated for bicycle travel). Bikeways can be on public streets or on separated paths. Trails and bikeways are considered active transportation facilities, in that they allow for any self-propelled, human-powered transportation mode.

The Active Choices Plan is unique in that most of its content is compiled from existing plans. The plan compiles existing conditions for greenways and trails, establishes goals and objectives, suggests design guidelines for facilities, and provides a comprehensive list of planned trail projects throughout the county. The plan organizes future trails projects by jurisdiction and priority, with the priorities determined by the planning document from which each project is taken. The majority of the plan consists of existing conditions analysis and future conditions maps and project lists for all of the participating agencies throughout Champaign County. The plan also provides a list of potential funding opportunities for greenways and trails projects. Finally, there is an appendix with all of the public outreach and comments received. The complete plan can be found at <http://www.ccrpc.org/greenways/documents.php>. Staff can provide hard copies of the plan upon request. Following is an analysis of the portions of the plan most relevant to Urbana.

Plan Introduction

This section sets the vision and scope of the plan. It explains the purpose and significance of the plan and provides definitions for key terms. The vision is a detailed narrative of how active transportation will be safe and accessible to all users in the year 2033. The purpose is to compile active transportation projects and to provide a guiding framework for future trail planning. The scope includes human-powered transportation and excludes horseback riding, water travel, and off-road vehicles.

Planning Process

The Active Choices Plan was compiled by the Champaign County Regional Planning Commission over the course of two years. The process was guided by Greenways and Trails Plan Policy and Technical Committees, which consist of staff members from various municipalities, districts, and agencies throughout Champaign County, including staff from the City of Urbana. The Technical Committee met four times per year, and the Policy Committee met once per year and to approve the final draft.

Public input was a key element in the compilation of the plan. The RPC held four public workshops in various community locations in order to maximize opportunities for citizens to contribute to the plan. There was also a 30-day public comment period once the draft plan was complete. At the workshops RPC staff collected comments from citizens on how to better provide trail opportunities and connections throughout Champaign County.

The RPC gave a presentation on the Active Choices Plan to the Urbana Plan Commission on November 7, 2013 and City Council on November 12, 2013. After a final 30-day comment period, the plan was approved by the Active Choices Policy Committee on December 19, 2013. The plan was forwarded to the Illinois Department of Transportation for final approval, and accepted with minor changes.

Literature Review and Existing Conditions

The Literature Review section details plans adopted by jurisdictions since the adoption of the 2004 Greenways and Trails Plan. For Urbana, this includes the 2005 Comprehensive Plan, the Bicycle Master Plan, the University Corridor Plan, the Boneyard Creek Master Plan, and the Downtown Urbana Plan. The Existing Conditions sections details greenways, trails, and bikeways existing throughout the County.

Goals & Objectives

There are seven broad goals and several measurable contributing objectives outlined in the plan. These goals are based on existing plans and public input. Staff has reviewed the Goals and Objectives for compatibility with Urbana's plans. The seven goals are as follows:

Goal 1: All Champaign County residents will be provided with a system of bikeways, bicycle routes, pedestrian paths, trails, and other greenways that provides connections between residences, schools, workplaces, other travel modes, major activity centers, and recreational sites.

Goal 2: All Champaign County residents will be provided with a greenways and trails system that emphasizes safety and user-friendliness.

Goal 3: All Champaign County residents will be provided with a greenways and trails system that emphasizes efficiency, mobility, and convenience.

Goal 4: The development and operation of greenways and trails will preserve and enhance the natural environment.

Goal 5: Planning and implementation of all greenways and trails system projects will be done in a coordinated manner emphasizing rational and cost-effective measures that promote economic vitality of Champaign County and its residents.

Goal 6: Greenways and Trails member agencies will provide educational materials and information about the countywide greenways and trails system to all interested persons.

Goal 7: The development and utilization of greenways and trails will improve quality of life in Champaign County.

Future Conditions Maps and Project Lists

The Future Conditions section lists every planned greenway, trail, and bikeway project in the county. It includes the location, distance, responsible party and priority level. All of this information comes from existing plans. Urbana's future conditions are listed on pages 200 through 218 (attached as Exhibit B). The maps on pages 214 to 217 are proposed to be adopted as the new Greenways and Trails Classification Map for the Urbana Comprehensive Plan (attached as Exhibit A).

Comprehensive Plan Adoption

Because most of the content of the plan is derived from other plans that have already been adopted, the adoption of the Active Choices Plan is somewhat of a formality. The projects outlined in the plan come from the Urbana Bicycle Master Plan, the Urbana Downtown Plan, the University Avenue Corridor Study, the Boneyard Creek Master Plan and other City plans and documents. The Active Choices Plan will become an Agency Plan in Urbana's Comprehensive Plan and the maps in the Active Choices Plan will replace Appendix C in the Comprehensive Plan.

Summary of Findings

1. The 2004 Champaign County Greenways and Trails Plan was adopted in the 2005 Urbana Comprehensive Plan as an Agency Plan and as Appendix C, Greenways and Trails Classification Map.
2. The 2013 Active Choices Champaign County Greenways and Trails Plan was compiled with guidance from and approval by the Active Choices Technical and Policy Committees, composed of staff from Champaign County jurisdictions including Urbana city staff.
3. The Active Choices Plan compiles existing conditions and future conditions for greenways, trails, and bikeways from existing plan documents, including the 2005 Comprehensive Plan, the

Bicycle Master Plan, the University Corridor Plan, the Boneyard Creek Master Plan, and the Downtown Urbana Plan.

4. The Active Choices Plan was based on input from agency staff and the public in general collected through several meetings, forums, and online; it sets out a vision for active transportation and recommends goals and offers implementation strategies which outline the projects, policies and programs to be implemented and identifies responsible parties for those items.
5. The Active Choices Plan will serve as an amendment of the 2005 Comprehensive Plan, both as an Agency Plan and as a replacement of Appendix C, Greenways and Trails Classification Map.
6. The Active Choices Plan has been approved by the State of Illinois Department of Transportation.

Options

The Urbana City Council has the following options regarding Plan Case 2223-CP-14:

- a) Approve the adoption of the Active Choices Plan as an amendment to the 2005 Urbana Comprehensive Plan.
- b) Deny the adoption of the Active Choices Plan as an amendment to the 2005 Urbana Comprehensive Plan.

Recommendation

At their July 24, 2014 meeting the Urbana Plan Commission held a public hearing regarding this case. The Plan Commission voted five ayes to zero nays to recommend that City Council **APPROVE** adoption of the Active Choices: Champaign County Greenways and Trails Plan as an amendment to 2005 Urbana Comprehensive Plan. Staff concurs with this recommendation.

Prepared By:

Jeff Engstrom, AICP
Interim Planning Division Manager

Attachments: Exhibit A: Future Conditions Maps for City of Urbana
Exhibit B: Future Projects List for City of Urbana

For a complete draft of the plan, please visit <http://www.ccrpc.org/greenways/documents.php>.
Hard copies will be provided upon request to tmandel@urbanaininois.us.

ORDINANCE NO. 2014-08-075

AN ORDINANCE AMENDING THE CITY OF 2005 URBANA COMPREHENSIVE PLAN

(Active Choices: Champaign County Greenways and Trails Plan -
Plan Case No. 2223-CP-14)

WHEREAS, the Urbana City Council on April 11, 2005 in Ordinance No. 2005-03-050 adopted the 2005 City of Urbana Comprehensive Plan; and

WHEREAS, the 2005 Comprehensive Plan contains goals, objectives, policies, future land use maps, and other recommendations pertaining to the entire City; and

WHEREAS, the 2005 Comprehensive Plan states that Agency Plans include goals, objectives and policies that are important to the City and assist in guiding land use decisions within the City; and

WHEREAS, Appendix "C", Greenways and Trails Classification Map of the 2005 Comprehensive Plan shows the existing and future off-street shared use paths and on-street bikeways as designated by the 2004 Champaign County Greenways and Trails Plan; and

WHEREAS, after due publication and proper legal notification of a public hearing on July 24, 2014, the Urbana

Plan Commission voted 5 ayes to 0 nays to recommended that the Urbana City Council adopt the Active Choices: Champaign County Greenways and Trails Plan as an official amendment to 2005 Urbana Comprehensive Plan; and

WHEREAS, the City Council finds that it is in the public interest to adopt an amendment to the 2005 Urbana Comprehensive Plan to provide a detailed plan to achieve these public policies.

NOW, THEREFORE, BE IT ORDAINED BY THE CORPORATE AUTHORITIES OF THE CITY OF URBANA, ILLINOIS, as follows:

Section 1. The "Active Choices: Champaign County Greenways and Trails Plan" is hereby adopted as an Agency Plan within the 2005 Comprehensive Plan of the City of Urbana, as amended, and replaces the 2004 Champaign County Greenways and Trails Plan.

Section 2. The attached maps labeled Exhibit A are hereby adopted as Appendix "C" of the 2005 Comprehensive Plan of the City of Urbana, as amended, and replace the existing Appendix "C", taken from the 2004 Champaign County Greenways and Trails Plan.

Section 3. The City Clerk is directed to publish this Ordinance in pamphlet form by authority of the corporate authorities and thereafter file a certified copy in the Champaign County Recorder's Office in conformance with Chapter 65, Section 11-12-7 of the Illinois Compiled Statutes (65 ILCS 5/11-12-7).

Section 4. This Ordinance shall be in full force and effect upon the expiration of 10 days after the date of filing notice of the adoption of the comprehensive plan amendment with the Champaign County Recorder, in conformance with Chapter 65, Section 11-12-7 of the Illinois Compiled Statutes (65 ILCS 5/11-12-7).

PASSED by the Corporate Authorities this _____ day of _____, 2014.

AYES:

NAYS:

ABSTAINS:

Phyllis D. Clark, City Clerk

APPROVED by the Mayor this _____ day of _____, 2014.

Laurel Lunt Prussing, Mayor

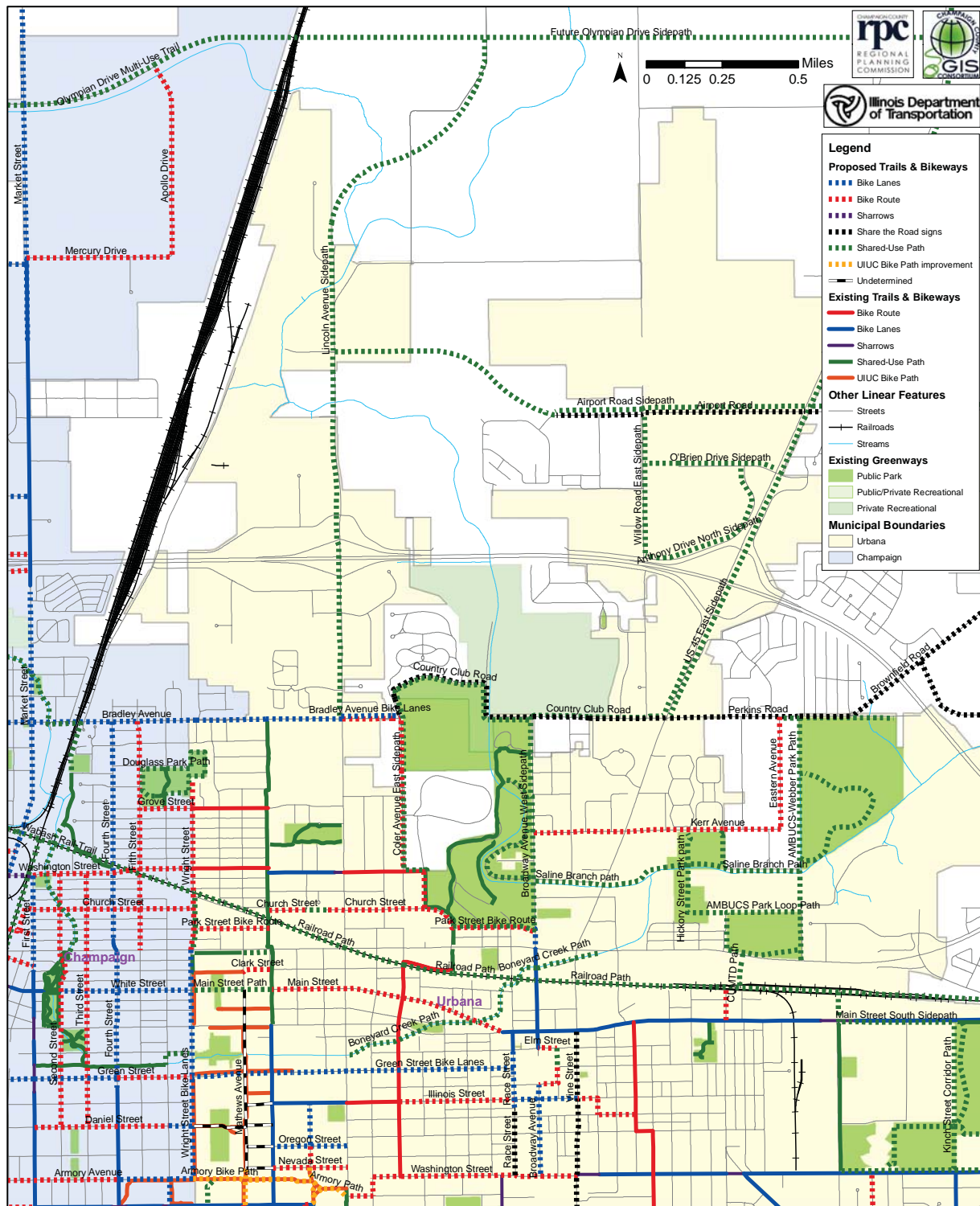
CERTIFICATE OF PUBLICATION IN PAMPHLET FORM

I, Phyllis D. Clark, certify that I am the duly elected and acting Municipal Clerk of the City of Urbana, Champaign County, Illinois. I certify that on the _____ day of _____, 2014, the corporate authorities of the City of Urbana passed and approved Ordinance No. _____, entitled: "**AN ORDINANCE AMENDING THE CITY OF URBANA 2005 COMPREHENSIVE PLAN** (Active Choices: Champaign County Greenways and Trails Plan - Plan Case No. 2223-CP-14)", which provided by its terms that it should be published in pamphlet form. The pamphlet form of Ordinance No. _____ was prepared, and a copy of such Ordinance was posted in the Urbana City Building commencing on the _____ day of _____, 2014, and continuing for at least ten (10) days thereafter. Copies of such Ordinance were also available for public inspection upon request at the Office of the City Clerk.

DATED at Urbana, Illinois, this _____ day of _____, 2014.

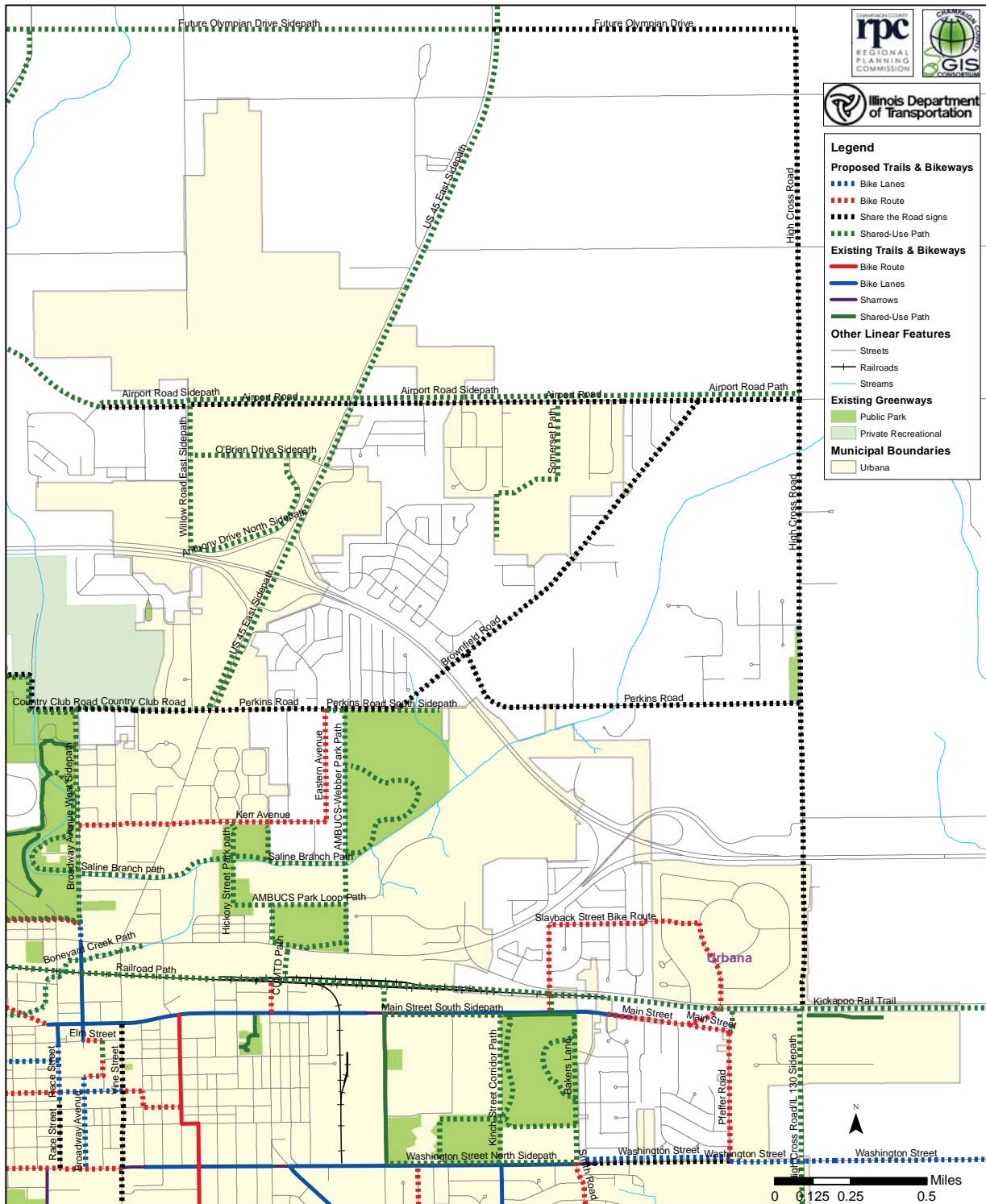
Map 28: Future Trail & Bikeway Conditions: NW Urbana

Active Choices: Champaign County Greenways & Trails Plan Update
Future Trail & Bikeway Conditions
Northwest Urbana



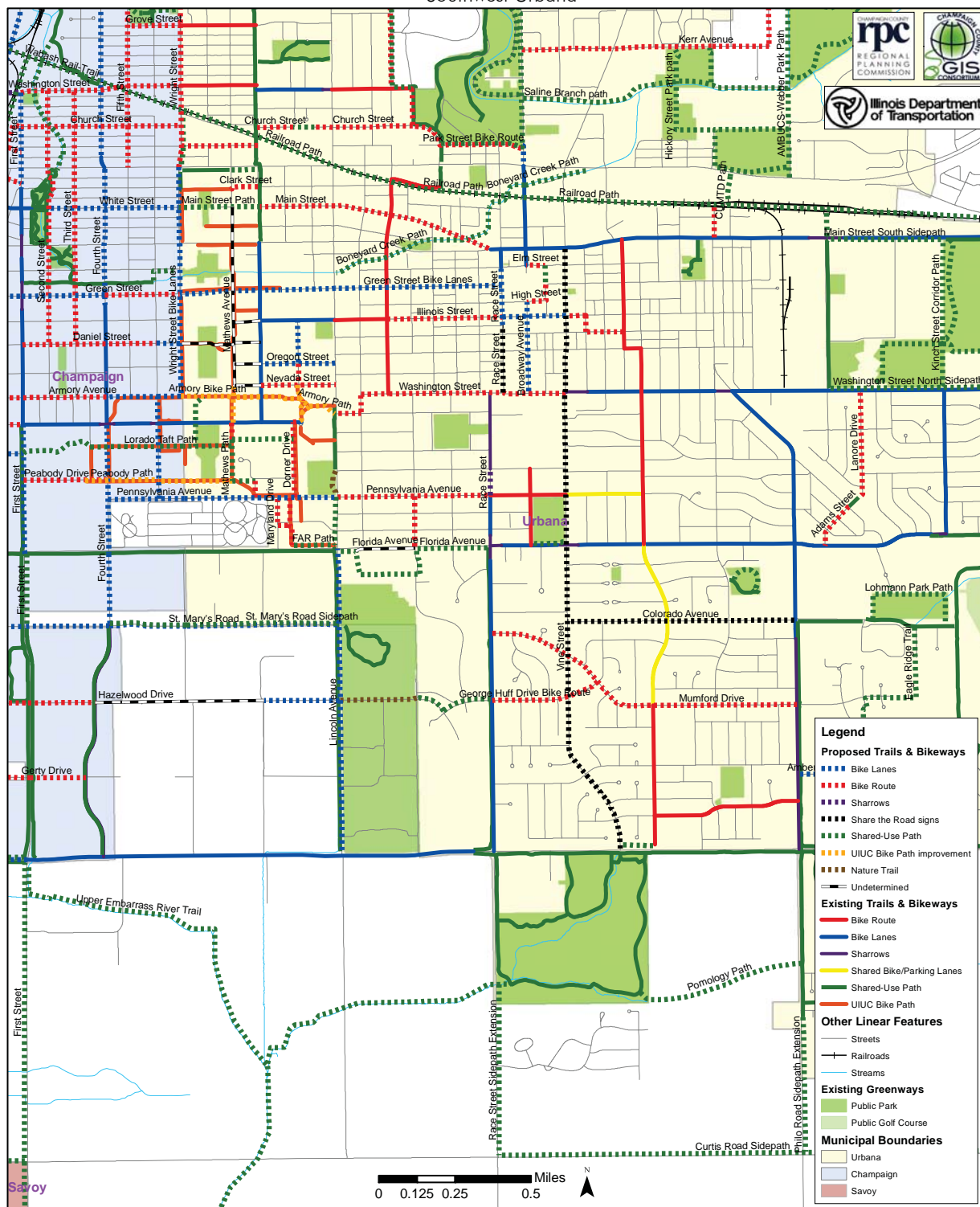
Map 29: Future Trail & Bikeway Conditions: NE Urbana

Active Choices: Champaign County Greenways & Trails Plan Update
Future Trail & Bikeway Conditions
Northeast Urbana



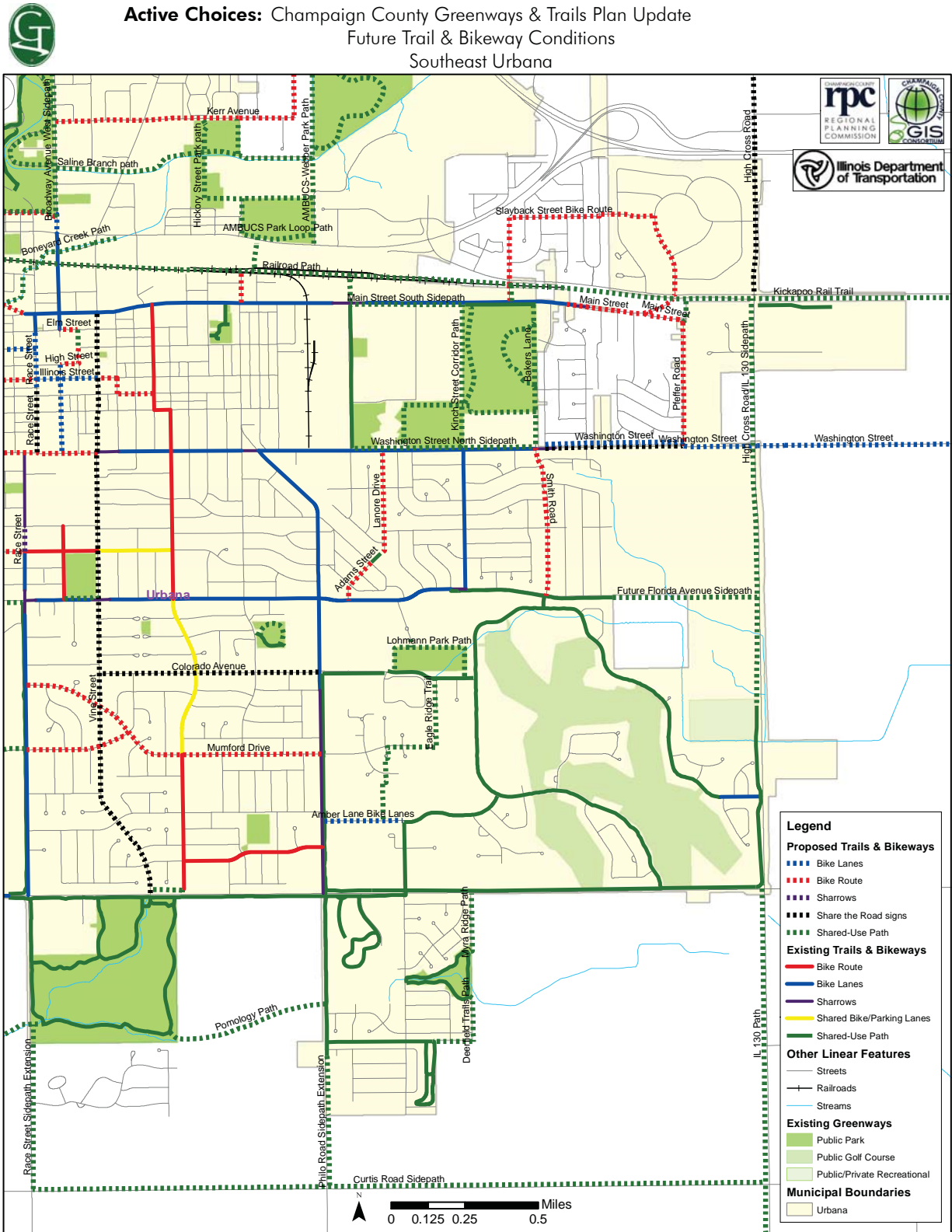
Map 30: Future Trail & Bikeway Conditions: SW Urbana

Active Choices: Champaign County Greenways & Trails Plan Update
Future Trail & Bikeway Conditions
Southwest Urbana



Map 31: Future Trail & Bikeway Conditions: SE Urbana

Active Choices: Champaign County Greenways & Trails Plan Update
 Future Trail & Bikeway Conditions
 Southeast Urbana



Active Choices

Champaign County Greenways & Trails Plan

Future Conditions

Urbana (including unincorporated areas)

Project ID	Name	Type	Plan	Terminus (NE)	Terminus (SW)	Distance	Jurisdiction	Municipality	Description	Priority	Time-frame
UR-HP-01	Amber Lane Bike Lanes	Bike Lanes	UBMP	Myra Ridge Dr	Philo Rd	0.27	Urbana	Urbana		High	High
UR-HP-02	Broadway Avenue	Bike Lanes	UBMP, University Ave	Park St	University Ave	0.07	Urbana	Urbana		High	High
UR-HP-03	Broadway Avenue	Bike Lanes	UBMP	High St	Illinois St	0.05	Urbana	Urbana		High	High
UR-HP-04	Broadway Avenue	Bike Lanes	UBMP	Illinois St	Washington St	0.25	Urbana	Urbana		High	High
UR-HP-05	Green Street Bike Lanes	Bike Lanes	UBMP, CBP	Lincoln Ave	Wright St	0.51	Urbana	Urbana		High	High
UR-HP-06	Illinois Street	Bike Lanes	UBMP	Vine St	Race St	0.21	Urbana	Urbana		High	High
UR-HP-07	Oregon Street	Bike Lanes	UBMP, CBP	Lincoln Ave	Goodwin Ave	0.25	Urbana	Urbana		High	High
UR-HP-08	Race Street	Bike Lanes	UBMP	Elm St	S of Illinois St	0.19	Urbana	Urbana		High	High
UR-HP-09	Clark Street	Bike Route	UBMP, GT, University Ave	Goodwin Ave	Mathews Ave	0.09	UIUC	Urbana		High	High
UR-HP-10	Elm Street	Bike Route	UBMP	Walnut St	Broadway Ave	0.06	Urbana	Urbana		High	High
UR-HP-11	Gregory Street	Bike Route	UBMP	Oregon St	Nevada St	0.07	UIUC	Urbana		High	High
UR-HP-12	High Street	Bike Route	UBMP	Walnut St	Broadway Ave	0.06	Urbana	Urbana		High	High
UR-HP-13	Illinois Street	Bike Route	UBMP	Race St	Coler Ave	0.55	Urbana	Urbana		High	High
UR-HP-14	Illinois Street HEUNA Bike Route	Bike Route	UBMP	Urbana Ave	Vine St	0.07	Urbana	Urbana	Thru Historic East Urbana	High	High
UR-HP-15	Lanore Drive	Bike Route	UBMP	Washington St	S terminus	0.36	Urbana	Urbana		High	High
UR-HP-16	Main Street	Bike Route	UBMP, CBP	Coler Ave	Goodwin Ave	0.43	Urbana	Urbana		High	High
UR-HP-17	Main Street	Bike Route	UBMP	Springfield Ave	Coler Ave	0.35	Urbana	Urbana		High	High
UR-HP-18	Mumford Drive	Bike Route	UBMP	Philo Rd	Race St	1.09	Urbana	Urbana		High	High
UR-HP-19	Park Street Bike Route	Bike Route	UBMP, University Ave	Broadway Ave	Mc-Cullough St	0.28	Urbana	Urbana		High	High

Future Conditions

Active Choices

Champaign County Greenways & Trails Plan

Project ID	Name	Type	Plan	Terminus (NE)	Terminus (SW)	Distance	Jurisdiction	Municipality	Description	Priority	Time-frame
UR-HP-20	Pennsylvania Avenue	Bike Route	SRTS	Race St	Lincoln Ave	0.50	Urbana	Urbana		High	High
UR-HP-21	Walnut Street	Bike Route	UBMP	Green St	High St	0.05	Urbana	Urbana		High	High
UR-HP-22	Washington Street	Bike Route	UBMP	Vine St	Busey Ave	0.68	Urbana	Urbana		High	High
UR-HP-23	Vine Street	Share the Road	UBMP	Main St	Windsor Rd	2.04	Urbana	Urbana		High	High
UR-HP-24	Anderson Street Shared-Use Path to Windsor Road	SUP (OS)	UBMP	Anderson St	Windsor Rd	0.01	Urbana	Urbana		High	High
UR-HP-25	Boneyard Creek Path	SUP (OS)	UBMP, University Ave	University Ave	Broadway Ave	0.22	Urbana	Urbana		High	High
UR-HP-26	Boneyard Creek Path	SUP (OS)	UBMP, University Ave	Griggs St	Main St	0.14	Urbana	Urbana		High	High
UR-HP-27	Boneyard Creek Path	SUP (OS)	UBMP, University Ave	Broadway Ave	Griggs St	0.16	Urbana	Urbana		High	High
UR-HP-28	Crestview Park Loop Path	SUP (OS)	UBMP	Crestview Park Path	Crestview Park Path	0.16	UPD	Urbana		High	High
UR-HP-29	Lincoln Square East Shared-Use Path	SUP (OS)	UBMP	Elm St	Green St	0.06	Lincoln Square	Urbana		High	High
UR-HP-30	Broadway Avenue West Side-path	SUP (SP)	UBMP, GT, University Ave	Country Club Rd	Park St	0.70	UPD	Urbana		High	High
UR-HP-31	Florida Avenue North Sidepath	SUP (SP)	UBMP	Vine St	Broadway Ave	0.11	UPD	Urbana		High	High
UR-HP-32	Future Florida Avenue Sidepath	SUP (SP)	UBMP, GT, IL 130	E of Abercorn St	High Cross Rd (IL 130)	0.49	Urbana	Urbana		High	High
UR-HP-33	Lincoln Avenue	SUP (SP)	CBP, UBMP	Pennsylvania Ave	Florida Ave	0.16	Urbana	Urbana		High	High
UR-HP-34	Park Street North Sidepath	SUP (SP)	UBMP, University Ave	Broadway Ave	McCullough St	0.27	UPD	Urbana		High	High

Active Choices

Champaign County Greenways & Trails Plan

Future Conditions

Project ID	Name	Type	Plan	Terminus (NE)	Terminus (SW)	Distance	Jurisdiction	Municipality	Description	Priority	Time-frame
UR-HP-35	AMBUCS Park Loop Path	SUP (OS)	UBMP, GT	AMBUCS-Webber Park Path	AMBUCS-Webber Park Path	0.61	UPD	Urbana		High	Med
UR-HP-36	AMBUCS-Webber Park Path	SUP (OS)	UBMP, GT	Perkins Rd	Saline Branch	0.50	UPD	Urbana		High	Med
UR-HP-37	AMBUCS-Webber Park Path	SUP (OS)	UBMP, GT	Saline Branch	AMBUCS Park	0.08	Urbana	Urbana		High	Med
UR-HP-38	AMBUCS-Webber Park Path	SUP (OS)	UBMP, GT	AMBUCS Park	University Ave	0.22	UPD	Urbana		High	Med
UR-HP-39	Chief Shemauger Park east path	SUP (OS)	UBMP, GT	Kerr Ave	Saline Branch Path	0.12	UPD	Urbana		High	Med
UR-HP-40	Chief Shemauger Park west path	SUP (OS)	UBMP, GT	Kerr Ave	Saline Branch Path	0.12	UPD	Urbana		High	Med
UR-HP-41	Kinch Street Corridor Path	SUP (OS)	UBMP, GT	Main St	Washington St	0.15	UPD	Urbana		High	Med
UR-HP-42	Lohmann Park Path	SUP (OS)	UBMP, GT	Colorado Ave	Colorado Ave	0.42	UPD	Urbana		High	Med
UR-HP-43	Lohmann Park-Thomas Paine path	SUP (OS)	UBMP	Thomas Paine School	Lohmann Park Path	0.03	USD	Urbana		High	Med
UR-HP-44	Prairie Park Loop Path	SUP (OS)	UBMP, GT	Kinch St	Washington St	0.34	UPD	Urbana		High	Med
UR-HP-45	Saline Branch path	SUP (OS)	UBMP, GT	Chief Shemauger Park	Broadway Ave	0.46	Urbana	Urbana		High	Med
UR-HP-46	Saline Branch Path	SUP (OS)	UBMP, GT	Perkins Road Park Site	Chief Shemauger Park	0.25	Urbana	Urbana		High	Med
UR-HP-47	Saline Branch path	SUP (OS)	UBMP, GT	Chief Shemauger Park	Chief Shemauger Park	0.19	UPD	Urbana		High	Med
UR-HP-48	Weaver Park East Path	SUP (OS)	UBMP, GT	Bakers Ln	Bakers Ln	0.34	UPD	Urbana		High	Med
UR-HP-49	Weaver Park South Path	SUP (OS)	UBMP, GT	Bakers Ln	Kinch St	0.27	UPD	Urbana		High	Med

Future Conditions

Active Choices

Champaign County Greenways & Trails Plan

Project ID	Name	Type	Plan	Terminus (NE)	Terminus (SW)	Distance	Jurisdiction	Municipality	Description	Priority	Time-frame
UR-HP-50	Weaver Park West Path	SUP (OS)	UBMP, GT	Main St	Prairie Park	0.36	UPD	Urbana		High	Med
UR-HP-51	Main Street South Sidepath	SUP (SP)	UBMP, GT	Weaver Park	Lierman Ave	0.38	Urbana	Urbana		High	Med
UR-HP-52	Saline Branch path	SUP (SP)	UBMP	Crystal Lake Pool Path	Broadway Ave	0.58	UPD	Urbana		High	Med
UR-HP-53	Green Street Bike Lanes	Bike Lanes	UBMP	Race St	Lincoln Ave	0.55	Urbana	Urbana		High	Low
UR-HP-54	Boneyard Creek Path	SUP (OS)	UBMP	Main St	Lincoln Ave	0.45	Urbana	Urbana		High	Low
UR-HP-55	Race Street Sidepath Extension	SUP (SP)	UBMP	Meadowbrook Park Prairie Path	Meadowbrook Park S limit	0.06	UPD	Urbana		High	Low
UR-HP-56	Pomology Path	SUP (OS)	UBMP, GT	Philo Rd	Meadowbrook Park	0.56	County	Urbana (unincorporated)		High	Low
UR-HP-57	Race Street Sidepath Extension	SUP (SP)	UBMP	Meadowbrook Park	Curtis Rd	0.50	County	Urbana (unincorporated)		High	Low
UR-HP-58	Perkins Road Park Site Trail	SUP (OS)	GT	AMBUCS-Webber Park Path	AM-BUCS-Webber Park Path	0.64	UPD	Urbana		High	
UR-HP-59	Gregory Path	UIUC Bike Path	CBP	Nevada St	Armory Path	0.05	UIUC	Urbana		High	
UR-HP-60	Gregory Path	UIUC Bike Path	CBP	Armory Path	Gregory Dr	0.07	UIUC	Urbana		High	
UR-HP-61	Gregory Path Spur	UIUC Bike Path	CBP	Armory Path	Gregory Path	0.03	UIUC	Urbana		High	
UR-MP-01	Bradley Avenue	Bike Lanes	UBMP	Lincoln Ave	Goodwin Ave	0.25	Urbana	Urbana		Med	High
UR-MP-02	Bradley Avenue	Bike Lanes	UBMP, CTMP	Goodwin Ave	Carver Dr	0.23	Urbana	Urbana		Med	High
UR-MP-03	Gregory Street	Bike Lanes	UBMP, CBP	Illinois St	Oregon St	0.14	Urbana	Urbana		Med	High
UR-MP-04	Washington Street	Bike Lanes	UBMP, IL 130	High Cross Rd (IL 130)	Pfeffer Rd	0.25	Urbana	Urbana		Med	High
UR-MP-05	Adams Street	Bike Route	UBMP	Fairlawn Dr	Florida Ave	0.16	Urbana	Urbana		Med	High

Active Choices

Champaign County Greenways & Trails Plan

Future Conditions

Project ID	Name	Type	Plan	Terminus (NE)	Terminus (SW)	Distance	Jurisdiction	Municipality	Description	Priority	Time-frame
UR-MP-06	Beringer Circle Bike Route	Bike Route	UBMP	Slayback Rd	University Ave	0.28	Urbana	Urbana		Med	High
UR-MP-07	Bradley Avenue	Bike Route	UBMP	Coler Ave	Lincoln Ave	0.16	Urbana	Urbana		Med	High
UR-MP-08	Busey Avenue Bike Route	Bike Route	UBMP	Washington St	Iowa St	0.06	Urbana	Urbana		Med	High
UR-MP-09	California Avenue HEUNA Bike Route	Bike Route	UBMP	Grove St	Urbana Ave	0.12	Urbana	Urbana	Thru Historic East Urbana	Med	High
UR-MP-10	Church Street Bike Route	Bike Route	UBMP, University Ave	McCullough St	Orchard St	0.12	Urbana	Urbana		Med	High
UR-MP-11	Coler Avenue Bike Route	Bike Route	UBMP	N of Sunset Dr	Fairview Ave	0.28	Urbana	Urbana		Med	High
UR-MP-12	Coler Avenue Bike Route	Bike Route	UBMP	Bradley Ave	S of Bradley Ave	0.17	Urbana	Urbana		Med	High
UR-MP-13	George Huff Drive Bike Route	Bike Route	UBMP	Mumford Dr	Race St	0.36	Urbana	Urbana		Med	High
UR-MP-14	Iowa Street Bike Route	Bike Route	UBMP	Busey Ave	Lincoln Ave	0.08	Urbana	Urbana		Med	High
UR-MP-15	Kerr Avenue	Bike Route	UBMP, GT	Urbana limits	Broadway Ave	0.63	Urbana	Urbana		Med	High
UR-MP-16	Kerr Avenue	Bike Route	UBMP	Eastern Ave	Urbana limits	0.19	County	Urbana		Med	High
UR-MP-17	Main Street	Bike Route	UBMP	Urbana limits	Scottswood Dr	0.18	Urbana	Urbana		Med	High
UR-MP-18	Main Street	Bike Route	UBMP	Pfeffer Rd	Urbana limits	0.03	Urbana	Urbana		Med	High
UR-MP-19	Nevada Street	Bike Route	UBMP, CBP	Lincoln Ave	Goodwin Ave	0.25	Urbana	Urbana		Med	High
UR-MP-20	Orchard Street Bike Route	Bike Route	UBMP	Fairview Ave	Church St	0.12	Urbana	Urbana		Med	High
UR-MP-21	Orchard Street Bike Route	Bike Route	UBMP	Pennsylvania Ave	Florida Ave	0.17	Urbana	Urbana		Med	High
UR-MP-22	Park Street Bike Route	Bike Route	UBMP, University Ave	Goodwin Ave	Wright St	0.25	Urbana	Urbana		Med	High
UR-MP-23	Pfeffer Road	Bike Route	UBMP	Main St	Washington St	0.42	Urbana	Urbana		Med	High

Future Conditions

Active Choices

Champaign County Greenways & Trails Plan

Project ID	Name	Type	Plan	Terminus (NE)	Terminus (SW)	Distance	Jurisdiction	Municipality	Description	Priority	Time-frame
UR-MP-24	Slayback Road Bike Route	Bike Route	UBMP	Beringer Cir	Urbana limits	0.16	Urbana	Urbana		Med	High
UR-MP-25	Smith Road	Bike Route	UBMP	Washington St	Florida Ave	0.51	Urbana	Urbana		Med	High
UR-MP-26	Smith Road	Bike Route	UBMP	University Ave	Main St	0.06	Urbana	Urbana		Med	High
UR-MP-27	Urbana Avenue HEUNA Bike Route	Bike Route	UBMP	Illinois St	California Ave	0.05	Urbana	Urbana	Thru Historic East Urbana	Med	High
UR-MP-28	Airport Road	Share the Road	UBMP	E of Somerset Dr	W of Landis Farm Rd	0.67	Urbana	Urbana		Med	High
UR-MP-29	Airport Road	Share the Road	UBMP	Cunningham Ave (US 45)	Willow Rd	0.53	Urbana	Urbana		Med	High
UR-MP-30	Coler Avenue	Share the Road	UBMP	N of Bradley Ave	Bradley Ave	0.06	Urbana	Urbana		Med	High
UR-MP-31	Colorado Avenue	Share the Road	UBMP	Philo Rd	Vine St	0.75	Urbana	Urbana		Med	High
UR-MP-32	Country Club Road	Share the Road	UBMP	Cunningham Ave (US 45)	Urbana limits	0.25	Urbana	Urbana		Med	High
UR-MP-33	High Cross Road	Share the Road	UBMP	I-74	I-74	0.05	IDOT	Urbana		Med	High
UR-MP-34	High Cross Road	Share the Road	UBMP	I-74	University Ave (US 150)	0.46	Urbana	Urbana		Med	High
UR-MP-35	Perkins Road	Share the Road	UBMP	Cunningham Ave (US 45)	Urbana limits	0.18	Urbana	Urbana		Med	High
UR-MP-36	Perkins Road	Share the Road	UBMP	Perkins Road Park Site	Brownfield Rd	0.17	Urbana	Urbana		Med	High
UR-MP-37	Race Street	Share the Road	UBMP	S of Illinois St	Washington St	0.22	Urbana	Urbana		Med	High
UR-MP-38	Washington Street	Share the Road	UBMP	Pfeffer Rd	Smith Rd	0.47	Urbana	Urbana		Med	High
UR-MP-39	Race Street	Sharrows	UBMP	Michigan Ave	Pennsylvania Ave	0.09	Urbana	Urbana		Med	High
UR-MP-40	Railroad Path	SUP (OS)	UBMP, GT	Broadway Ave	McCullough St	0.27	Penn Central RR	Urbana		Med	High

Active Choices

Champaign County Greenways & Trails Plan

Future Conditions

Project ID	Name	Type	Plan	Terminus (NE)	Terminus (SW)	Distance	Jurisdiction	Municipality	Description	Priority	Time-frame
UR-MP-41	High Cross Road/ IL 130 Sidepath	SUP (SP)	UBMP, IL 130	Washington St	Village Inn Pizza	0.90	IDOT	Urbana		Med	High
UR-MP-42	High Cross Road/ IL 130 Sidepath	SUP (SP)	UBMP, IL 130	US 150	Urbana limits S of Tatman Ct	0.25	IDOT	Urbana		Med	High
UR-MP-43	US 45 East Sidepath	SUP (SP)	UBMP, GT	O'Brien Dr	Perkins Rd	0.87	IDOT	Urbana		Med	High
UR-MP-44	US 45 East Sidepath	SUP (SP)	UBMP, GT	Urbana limits	O'Brien Dr	0.64	IDOT	Urbana		Med	High
UR-MP-45	Windsor Road North Sidepath	SUP (SP)	UBMP	Anderson St	Vine St	0.10	Urbana	Urbana		Med	High
UR-MP-46	Wright Street East Sidepath	SUP (SP)	UBMP, University Ave	Park St	University Ave	0.06	Urbana	Urbana		Med	High
UR-MP-47	Washington Street	Bike Lanes	UBMP, IL 130	E of High Cross Rd (IL 130)	High Cross Rd (IL 130)	0.10	County	Urbana (unincorporated)		Med	High
UR-MP-48	Bradley Avenue	Bike Route	UBMP	Coler Ave	Lincoln Ave	0.03	County	Urbana (unincorporated)		Med	High
UR-MP-49	Coler Avenue Bike Route	Bike Route	UBMP	S of Bradley Ave	N of Sunset Dr	0.05	County	Urbana (unincorporated)		Med	High
UR-MP-50	Eastern Avenue	Bike Route	UBMP	Perkins Rd	Kerr Ave	0.37	County	Urbana (unincorporated)		Med	High
UR-MP-51	Main Street	Bike Route	UBMP	University Ave	Urbana limits	0.22	County	Urbana (unincorporated)		Med	High
UR-MP-52	Main Street	Bike Route	UBMP	Urbana limits	Main St	0.11	County	Urbana (unincorporated)		Med	High
UR-MP-53	Slayback Street Bike Route	Bike Route	UBMP	Urbana limits	Smith Rd	0.34	County	Urbana (unincorporated)		Med	High
UR-MP-54	Smith Road Bike Route	Bike Route	UBMP	Slayback St	University Ave	0.23	County	Urbana (unincorporated)		Med	High
UR-MP-55	Airport Road	Share the Road	UBMP	Captiva St	Cunningham Ave (US 45)	0.22	County	Urbana (unincorporated)		Med	High
UR-MP-56	Airport Road	Share the Road	UBMP	High Cross Rd	E of Somerset Dr	0.58	County	Urbana (unincorporated)		Med	High
UR-MP-57	Airport Road	Share the Road	UBMP	Willow Rd	Apple Tree St	0.28	County	Urbana (unincorporated)		Med	High

Future Conditions

Active Choices

Champaign County Greenways & Trails Plan

Project ID	Name	Type	Plan	Terminus (NE)	Terminus (SW)	Distance	Jurisdiction	Municipality	Description	Priority	Time-frame
UR-MP-58	Brownfield Road	Share the Road	UBMP	Airport Rd	Perkins Rd	1.43	County	Urbana (unincorporated)		Med	High
UR-MP-59	Coler Avenue	Share the Road	UBMP	Country Club Rd	N of Bradley Ave	0.01	County	Urbana (unincorporated)		Med	High
UR-MP-60	Country Club Road	Share the Road	UBMP	Broadway Ave	Coler Ave	0.60	County	Urbana (unincorporated)		Med	High
UR-MP-61	Country Club Road	Share the Road	UBMP	Urbana limits	Broadway Ave	0.19	County	Urbana (unincorporated)		Med	High
UR-MP-62	High Cross Road	Share the Road	UBMP	Airport Rd	I-74	1.49	County	Urbana (unincorporated)		Med	High
UR-MP-63	Perkins Road	Share the Road	UBMP	Perkins Road Park Site	Urbana limits E of Spring Cir	0.25	County	Urbana (unincorporated)		Med	High
UR-MP-64	Perkins Road	Share the Road	UBMP	High Cross Rd	Brownfield Rd	1.20	County	Urbana (unincorporated)		Med	High
UR-MP-65	High Cross Road/ IL 130 Sidepath	SUP (SP)	UBMP, IL 130	Urbana limits S of Tatman Ct	Washington St	0.24	IDOT	Urbana (unincorporated)		Med	High
UR-MP-66	Kickapoo Rail Trail	SUP (SP)	UBMP, GT, IL 130	IL 130 (High Cross Rd)	Smith Rd	0.83	County	Urbana (unincorporated)		Med	High
UR-MP-67	Bradley Avenue Bike Lanes	Bike Lanes	UBMP	Coler Ave	Lincoln Ave	0.17	Urbana	Urbana		Med	Med
UR-MP-68	Lincoln Avenue	Bike Lanes	CBP	Hazelwood Dr	Windsor Rd	0.50	UIUC	Urbana		Med	Med
UR-MP-69	Lincoln Avenue	Bike Lanes	CBP	St. Mary's Rd	Hazelwood Dr	0.25	UIUC	Urbana		Med	Med
UR-MP-70	Lincoln Avenue	Bike Lanes	CBP	Florida Ave	St. Mary's Rd	0.25	UIUC	Urbana		Med	Med
UR-MP-71	Lincoln Avenue	Nature Trail	CBP	Michigan Ave	Pennsylvania Ave	0.09	UIUC	Urbana		Med	Med
UR-MP-72	Bakers Lane	SUP (OS)	UBMP	Main St	Washington St	0.49	Urbana	Urbana		Med	Med
UR-MP-73	Florida Ave path around UI President's House	SUP (OS)	UBMP, GT	Orchard St	Lincoln Ave	0.41	UIUC	Urbana		Med	Med
UR-MP-74	Hickory Street Park path	SUP (OS)	UBMP	Saline Branch Path	AMBUCS Park Loop Path	0.29	UPD	Urbana		Med	Med

Active Choices

Champaign County Greenways & Trails Plan

Future Conditions

Project ID	Name	Type	Plan	Terminus (NE)	Terminus (SW)	Distance	Jurisdiction	Municipality	Description	Priority	Time-frame
UR-MP-75	Lorado Taft Path	SUP (OS)	CBP	Mathews Path	Urbana limits	0.18	UIUC	Urbana		Med	Med
UR-MP-76	Lorado Taft Path	SUP (OS)	CBP	Dorner Dr	Mathews Ave	0.20	UIUC	Urbana		Med	Med
UR-MP-77	Main Street Path	SUP (OS)	CBP, University Ave	Goodwin Ave	Wright St	0.26	UIUC	Urbana		Med	Med
UR-MP-78	Peabody Drive Path	SUP (OS)	CBP	Goodwin Ave	Mathews Path	0.08	UIUC	Urbana		Med	Med
UR-MP-79	Coler Avenue East Sidepath	SUP (SP)	UBMP	N of Sunset Dr	Fairview Ave	0.27	Urbana	Urbana		Med	Med
UR-MP-80	Coler Avenue East Sidepath	SUP (SP)	UBMP	N of Bradley Ave	S of Bradley Ave	0.24	UPD	Urbana		Med	Med
UR-MP-81	Country Club Road South Sidepath	SUP (SP)	UBMP	Broadway Ave	Coler Ave	0.56	UPD	Urbana		Med	Med
UR-MP-82	Fairview Avenue North Sidepath	SUP (SP)	UBMP	Orchard St	Coler Ave	0.08	Urbana	Urbana		Med	Med
UR-MP-83	Florida Avenue	SUP (SP)	UBMP, GT	Race St	Orchard St	0.23	UIUC	Urbana		Med	Med
UR-MP-84	George Huff Drive Sidepath	SUP (SP)	UBMP, CBP	Race St	Hazelwood Dr	0.16	UIUC	Urbana		Med	Med
UR-MP-85	Hazelwood Drive Shared-Use Path	SUP (SP)	UBMP, CBP	George Huff Dr	Hazelwood Ct	0.10	UIUC	Urbana		Med	Med
UR-MP-86	Lincoln Avenue Sidepath	SUP (SP)	UBMP	Killarney St	Bradley Ave	0.34	Urbana	Urbana		Med	Med
UR-MP-87	Perkins Road South Sidepath	SUP (SP)	UBMP	Webber Park	Webber Park	0.31	UPD	Urbana		Med	Med
UR-MP-88	Washington Street North Sidepath	SUP (SP)	UBMP	Smith Rd	Lierman Ave	0.62	Urbana	Urbana		Med	Med
UR-MP-89	Peabody Path	UIUC Bike Path	CBP	Mathews Path	Urbana limit	0.16	UIUC	Urbana		Med	Med
UR-MP-90	Bradley Avenue Bike Lanes	Bike Lanes	UBMP	Coler Ave	Lincoln Ave	0.02	County	Urbana (unincorporated)		Med	Med

Future Conditions

Active Choices

Champaign County Greenways & Trails Plan

Project ID	Name	Type	Plan	Terminus (NE)	Terminus (SW)	Distance	Jurisdiction	Municipality	Description	Priority	Time-frame
UR-MP-91	Hazelwood Drive Path	Nature Trail	UBMP, CBP, GT	Hazelwood Ct	Lincoln Ave	0.25	UIUC	Urbana (unincorporated)		Med	Med
UR-MP-92	Coler Avenue East Sidepath	SUP (SP)	UBMP	Country Club Rd	N of Bradley Ave	0.03	UPD	Urbana (unincorporated)		Med	Med
UR-MP-93	Coler Avenue East Sidepath	SUP (SP)	UBMP	S of Bradley Ave	N of Sunset Dr	0.06	County	Urbana (unincorporated)		Med	Med
UR-MP-94	Pennsylvania Avenue	Bike Lanes	CBP	Lincoln Ave	Urbana limits	0.50	UIUC	Urbana		Med	Low
UR-MP-95	Washington Street	Bike Lanes	UBMP, IL 130	Pfeffer Rd	Smith Rd	0.47	Urbana	Urbana		Med	Low
UR-MP-96	Cottage Grove Avenue Bike Route	Bike Route	UBMP	Penn Central RR	Main St	0.11	Urbana	Urbana		Med	Low
UR-MP-97	Dorner Drive	Bike Route	CBP	Gregory Dr	Pennsylvania Ave	0.25	UIUC	Urbana		Med	Low
UR-MP-98	Mathews Avenue	Bike Route	CBP	Gregory Dr	Lorado Taft Path	0.06	UIUC	Urbana		Med	Low
UR-MP-99	CUMTD Path	SUP (OS)	UBMP	University Ave	Penn Central RR	0.12	CUMTD	Urbana		Med	Low
UR-MP-100	Deerfield Trails Path	SUP (OS)	UBMP, GT	South Ridge Park	Marc Trail	0.17	Urbana	Urbana		Med	Low
UR-MP-101	Lierman Avenue Trailhead to Railroad Path	SUP (OS)	UBMP	Penn Central RR	Main St	0.10	Urbana	Urbana		Med	Low
UR-MP-102	Marc Trail Path Extension	SUP (OS)	UBMP, GT	Deerfield Trails Path	Marc Trail	0.14	Urbana	Urbana		Med	Low
UR-MP-103	Mathews Path	SUP (OS)	CBP	Lorado Taft Path	Peabody Dr	0.12	UIUC	Urbana		Med	Low
UR-MP-104	Myra Ridge Path	SUP (OS)	UBMP, GT	Windsor Rd	South Ridge Park	0.21	Urbana	Urbana		Med	Low
UR-MP-105	Pfeffer Road Trailhead to Kickapoo Trail	SUP (OS)	UBMP	Railroad Path	Main St	0.08	Urbana	Urbana		Med	Low
UR-MP-106	Railroad Path	SUP (OS)	UBMP, GT	McCullough St	Coler Ave	0.17	Penn Central RR	Urbana		Med	Low
UR-MP-107	Railroad Path	SUP (OS)	UBMP, GT	Smith Rd	Broadway Ave	1.55	Penn Central RR	Urbana		Med	Low

Active Choices

Champaign County Greenways & Trails Plan

Future Conditions

Project ID	Name	Type	Plan	Terminus (NE)	Terminus (SW)	Distance	Jurisdiction	Municipality	Description	Priority	Time-frame
UR-MP-108	Railroad Path	SUP (OS)	UBMP, GT, University Ave	Lincoln Ave	Wright St	0.53	Penn Central RR	Urbana		Med	Low
UR-MP-109	Railroad Path	SUP (OS)	UBMP, GT, University Ave	Coler Ave	Lincoln Ave	0.20	Penn Central RR	Urbana	aka RTT Urbana West	Med	Low
UR-MP-110	Airport Road Sidepath	SUP (SP)	UBMP	Cunningham Ave (US 45)	Willow Rd	0.55	Urbana	Urbana		Med	Low
UR-MP-111	Airport Road Sidepath	SUP (SP)	UBMP, GT	W of Landis Farm Rd	Captiva St	0.16	Urbana	Urbana		Med	Low
UR-MP-112	Anthony Drive North Sidepath	SUP (SP)	UBMP	O'Brien Dr	Willow Rd	0.55	Urbana	Urbana		Med	Low
UR-MP-113	Country Club Road	SUP (SP)	UBMP	Cunningham Ave (US 45)	Urbana limits	0.25	Urbana	Urbana		Med	Low
UR-MP-114	FAR Path	SUP (SP)	CBP	Lincoln Ave	Virginia Dr	0.14	UIUC	Urbana	Along Florida Avenue, sign installation	Med	Low
UR-MP-115	Future Airport Road Sidepath	SUP (SP)	UBMP	Apple Tree Drive	Lincoln Ave	0.25	Urbana	Urbana		Med	Low
UR-MP-116	Future O'Brien Drive Sidepath	SUP (SP)	UBMP	O'Brien Dr	Willow Rd	0.11	Urbana	Urbana		Med	Low
UR-MP-117	Lincoln Avenue Sidepath	SUP (SP)	UBMP	Anthony Dr	Killarney St	0.32	IDOT	Urbana		Med	Low
UR-MP-118	Lincoln Avenue Sidepath	SUP (SP)	UBMP	Wilbur Rd	Anthony Dr	0.32	Urbana	Urbana		Med	Low
UR-MP-119	O'Brien Drive Sidepath	SUP (SP)	UBMP	Cunningham Ave (US 45)	W terminus	0.32	Urbana	Urbana		Med	Low
UR-MP-120	Philo Road Sidepath Extension	SUP (SP)	UBMP	S of Marc Trail	Urbana limits	0.20	Urbana	Urbana		Med	Low
UR-MP-121	Smith Road Sidepath	SUP (SP)	UBMP, GT	Kickapoo Rail-Trail	Main St	0.06	Urbana	Urbana		Med	Low
UR-MP-122	University Avenue Path	SUP (SP)	CBP, University Ave	Goodwin Ave	Mathews Ave	0.10	UIUC	Urbana		Med	Low

Future Conditions

Active Choices

Champaign County Greenways & Trails Plan

Project ID	Name	Type	Plan	Terminus (NE)	Terminus (SW)	Distance	Jurisdiction	Municipality	Description	Priority	Time-frame
UR-MP-123	US 45 West Side-path	SUP (SP)	UBMP	Kenyon Rd	Country Club Rd	0.19	IDOT	Urbana		Med	Low
UR-MP-124	Willow Road East Sidepath	SUP (SP)	UBMP	Airport Rd	Anthony Dr	0.47	Urbana	Urbana		Med	Low
UR-MP-125	Wright Street East Sidepath	SUP (SP)	UBMP, University Ave	Railroad	Park St	0.12	Urbana	Urbana		Med	Low
UR-MP-126	Mathews Path	UIUC Bike Path	CBP	Nevada St	Gregory Dr	0.12	UIUC	Urbana		Med	Low
UR-MP-127	Florida Avenue	Un-determined	CBP	Orchard St	Lincoln Ave	0.20	UIUC	Urbana		Med	Low
UR-MP-128	Washington Street	Bike Lanes	UBMP	Cottonwood Rd	E of High Cross Rd (IL 130)	0.91	County	Urbana (unincorporated)		Med	Low
UR-MP-129	Future Olympian Drive	Share the Road	UBMP, GT (path)	High Cross Rd	Cunningham Ave (US 45)	1.00	County	Urbana (unincorporated)		Med	Low
UR-MP-130	High Cross Road	Share the Road	UBMP	Future Olympian Dr	Airport Rd	1.22	County	Urbana (unincorporated)		Med	Low
UR-MP-131	Airport Road Side-path	SUP (SP)	UBMP, GT	Brownfield Rd	W of Landis Farm Rd	0.77	County	Urbana (unincorporated)		Med	Low
UR-MP-132	Airport Road Side-path	SUP (SP)	UBMP	Willow Rd	Apple Tree St	0.29	County	Urbana (unincorporated)		Med	Low
UR-MP-133	Airport Road Side-path	SUP (SP)	UBMP, GT	Captiva St	Cunningham Ave (US 45)	0.20	County	Urbana (unincorporated)		Med	Low
UR-MP-134	Country Club Road	SUP (SP)	UBMP	Urbana limits	Broadway Ave	0.19	County	Urbana (unincorporated)		Med	Low
UR-MP-135	Curtis Road Side-path	SUP (SP)	UBMP	High Cross Rd	Race St	2.50	County	Urbana (unincorporated)		Med	Low
UR-MP-136	Future Airport Road Sidepath	SUP (SP)	UBMP	Apple Tree Drive	Lincoln Ave	0.54	County	Urbana (unincorporated)		Med	Low
UR-MP-137	Future Olympian Drive Side-path	SUP (SP)	UBMP, CTP	US 45	Lincoln Ave	1.51	County	Urbana (unincorporated)		Med	Low
UR-MP-138	Future Olympian Drive Side-path	SUP (SP)	UBMP, CTP	Lincoln Ave	CNRR	0.63	County	Urbana (unincorporated)		Med	Low

Active Choices

Champaign County Greenways & Trails Plan

Future Conditions

Project ID	Name	Type	Plan	Terminus (NE)	Terminus (SW)	Distance	Jurisdiction	Municipality	Description	Priority	Time-frame
UR-MP-139	Lincoln Avenue Sidepath	SUP (SP)	UBMP	Olympian Dr (future)	Urbana limits N of Saline Ct	0.85	County	Urbana (unincorporated)		Med	Low
UR-MP-140	Lincoln Avenue Sidepath	SUP (SP)	UBMP	Urbana limits	Wilbur Rd	0.15	County	Urbana (unincorporated)		Med	Low
UR-MP-141	Lincoln Avenue Sidepath	SUP (SP)	UBMP	Urbana limits N of Saline Ct	Urbana limits S of Somer Dr	0.48	County	Urbana (unincorporated)		Med	Low
UR-MP-142	Perkins Road South Sidepath	SUP (SP)	UBMP	Perkins Road Park Site	Eastern Ave	0.06	County	Urbana (unincorporated)		Med	Low
UR-MP-143	Philo Road Sidepath Extension	SUP (SP)	UBMP	Urbana limits	Curtis Rd	0.24	County	Urbana (unincorporated)		Med	Low
UR-MP-144	US 45 East Sidepath	SUP (SP)	UBMP	Future Olympian Dr	Urbana limits	0.91	IDOT	Urbana (unincorporated)		Med	Low
UR-MP-145	St. Mary's Road	Bike Lanes	St. Mary's Road, CBP	Lincoln Ave	Wright St	0.50	UIUC	Urbana		Med	
UR-MP-146	Church Street	Bike Route	University Ave	Orchard St	W of Lincoln Ave	0.32	Urbana	Urbana		Med	
UR-MP-147	Church Street	Bike Route	University Ave	Harvey St	Goodwin Ave	0.12	Urbana	Urbana		Med	
UR-MP-148	College Court	Bike Route	CBP	Virginia Dr	Maryland Dr	0.04	UIUC	Urbana		Med	
UR-MP-149	Goodwin Avenue	Bike Route	CBP	Peabody Dr	Pennsylvania Ave	0.06	UIUC	Urbana		Med	
UR-MP-150	Gregory Drive Bike Route	Bike Route	CBP	Gregory Path	Dorner Dr	0.02	UIUC	Urbana		Med	
UR-MP-151	Maryland Drive	Bike Route	CBP	Pennsylvania Ave	College Ct	0.09	UIUC	Urbana		Med	
UR-MP-152	Virginia Drive	Bike Route	CBP	Pennsylvania Ave	Florida Ave	0.16	Urbana	Urbana		Med	
UR-MP-153	Eagle Ridge Trail	SUP (OS)	Urbana Comp Plan	Colorado Ave	Amber Ln	0.67	Urbana	Urbana		Med	
UR-MP-154	Illinois American Water Path	SUP (OS)	University Ave	W of Lincoln Ave	Harvey St	0.07	IAWC	Urbana	Church Street corridor	Med	
UR-MP-155	Library Path	SUP (OS)	CBP	Armory Path	Lorado Taft Path	0.18	UIUC	Urbana		Med	
UR-MP-156	St. Mary's Road Sidepath	SUP (SP)	St. Mary's Road	Lincoln Ave	Wright St	0.50	UIUC	Urbana		Med	

Future Conditions

Active Choices

Champaign County Greenways & Trails Plan

Project ID	Name	Type	Plan	Terminus (NE)	Terminus (SW)	Distance	Jurisdiction	Municipality	Description	Priority	Time-frame
UR-MP-157	Armory Bike Path	UIUC Bike Path	CBP	Mathews Ave	Wright St	0.17	UIUC	Urbana		Med	
UR-MP-158	Armory Bike Path	UIUC Bike Path	CBP	Gregory Path	Goodwin Ave	0.13	UIUC	Urbana		Med	
UR-MP-159	Armory Path	UIUC Bike Path	CBP	Goodwin Ave	Mathews Ave	0.18	UIUC	Urbana		Med	
UR-MP-160	Armory Path	UIUC Bike Path	CBP	Lincoln Ave	Gregory Path	0.14	UIUC	Urbana		Med	
UR-MP-161	Illinois Street Path	Un-determined	CBP	Goodwin Ave	Mathews Ave	0.09	UIUC	Urbana		Med	
UR-MP-162	Mathews Avenue	Un-determined	CBP	Green St	Nevada St	0.32	UIUC	Urbana		Med	
UR-MP-163	Mathews Avenue	Un-determined	CBP	Main St	Green St	0.28	Urbana	Urbana		Med	
UR-MP-164	Nevada Street	Un-determined	CBP	Goodwin Ave	Mathews Ave	0.09	UIUC	Urbana		Med	
UR-MP-165	Oregon Street	Un-determined	CBP	Goodwin Ave	Mathews Ave	0.09	UIUC	Urbana		Med	
UR-MP-166	Quad Path	Un-determined	CBP	Goodwin Ave	Mathews Ave	0.09	UIUC	Urbana		Med	
UR-MP-167	Quad Path	Un-determined	CBP	Mathews Ave	Wright St	0.17	UIUC	Urbana		Med	
UR-MP-168	Hazelwood Drive	Bike Lanes	CBP	Lincoln Ave	Goodwin Ave	0.25	UIUC	Urbana (unincorporated)		Med	
UR-MP-169	Airport Road Path	SUP (SP)	GT	Brownfield Rd	High Cross Rd	0.33	County	Urbana (unincorporated)		Med	
UR-MP-170	Hazelwood Drive	Un-determined	CBP	Goodwin Ave	Wright St	0.24	UIUC	Urbana (unincorporated)		Med	
UR-LP-01	Somerset Path	SUP (OS)	UBMP	Airport Rd	S of Airport Rd	0.63	Urbana	Urbana		Low	Med

MINUTES OF A REGULAR MEETING

URBANA PLAN COMMISSION

DRAFT

DATE: July 24, 2014

TIME: 7:30 P.M.

PLACE: Urbana City Building
Council Chambers
400 South Vine Street
Urbana, IL 61801

MEMBER PRESENT: Maria Byndom, Andrew Fell, Tyler Fitch, Lew Hopkins,
Bernadine Stake

MEMBERS EXCUSED: Dannie Otto

STAFF PRESENT: Jeff Engstrom, Interim Planning Manager; Kevin Garcia, Planner II; Max Mahalek, Planning Intern; Teri Andel, Planning Administrative Assistant

OTHERS PRESENT: Ronald Barcus, Bill Brown, Miles Burgess, Marvin Folker, Bradley Kelm, Damon McFall, Carol McKusick, Rodney A. Meikamp, Janice Mouschovias, Nancy Nash, Forman Pursley, Kelly Sanner, Anthony Tate, Susan Taylor, Dave Waline, Jay Warendorff

NEW PUBLIC HEARINGS

Plan Case No. 2223-CP-14: A request by the Urbana Zoning Administrator to adopt the Active Choices: Champaign County Greenways & Trails Plan as an amendment to the 2005 Urbana Comprehensive Plan.

Chair Fitch opened this case. Jeff Engstrom, Interim Planning Manager, presented this case to the Plan Commission. He gave an overview of the proposed plan and discussed the planning process, the literature review section, goals & objectives and Future Conditions Maps and project lists. He presented City staff's recommendation for approval.

Chair Fitch asked if the Plan Commission had any questions for City staff.

Mr. Hopkins wondered what the significant differences are in the proposed plan from what the City has already adopted. Mr. Engstrom replied that the main difference is Appendix C, the Greenways and Trails Official Plan.

Mr. Hopkins asked where he could find the amended Comprehensive Plan. Mr. Engstrom stated that City staff has realized that they need to update the publication of the Urbana Comprehensive Plan. However, the Planning Division has been short staffed.

Ms. Stake questioned how the Champaign County staff figured out where to place the trails. Are there both pedestrian trails and bike trails? Mr. Engstrom responded that the majority of the bike trails are on-street so they are not shared. However, the majority of the off-street trails are shared-use trails where pedestrians and bicyclists would both be using them. All of the shared-use trails are put together with recommendations from the Regional Planning Commission on proper widths to make them safe for both modes.

Mr. Fitch wondered if the proposed plans are currently in Public Works' Capital Improvement Plan (CIP). Mr. Engstrom answered that the proposed plan does not have timeframes listed for each project. One would have to go to each individual plans to see the timeframes and priorities for the projects. Although not all of the projects are included in the CIP, Public Works is aware of every project.

Mr. Fitch asked if the Lincoln Avenue extension side paths are part of the \$7.9 million that the City just received. Mr. Engstrom said yes.

With no further questions for City staff, Chair Fitch opened the case up for public input.

Susan Taylor, of 606 West Michigan Avenue, talked about the trail going east to Danville. This road is being widened to provide for the trail. There has been a mass movement of soil, which is some of the richest soil. She expressed concern that they also are not taking into consideration the drainage issues in this area. Mr. Engstrom stated that he would pass her concerns along to Bill Gray, City Engineer.

With no further input from the audience, Chair Fitch closed the public input portion of the hearing. He opened the hearing up for Plan Commission discussion and/or motion(s).

Mr. Hopkins moved that the Plan Commission forward Plan Case No. 2223-CP-14 to the City Council with a recommendation for approval. Ms. Byndom seconded the motion.

Ms. Stake commented that not many people understand how important the soil is. There is a difference in the soil from one area to the next. We have the richest soil in the world. We should be careful and take care of the land.

Roll call on the motion was as follows:

Mr. Fitch	-	Yes	Mr. Hopkins	-	Yes
Ms. Stake	-	Yes	Ms. Byndom	-	Yes
Mr. Fell	-	Yes			

The motion was passed unanimously. Mr. Engstrom stated that this case would go before the City Council on August 4, 2014.