

October 20, 2011

MEMO

To: Urbana Citizens, Council Members, Staff

From: Mayor Prussing

RE: PROPOSED WARD MAP

Every ten years (after the federal census) the City is required to re-draw the seven wards from which council members are elected in order to assure roughly equal population in each ward. Attached is a copy of the revised ward map for your review.

On this working draft the proposed changes are shown with the underlying color from the ward from which they were taken with hatch marks in the color of their new home ward. The map shows the proposed boundaries of each ward, including precincts and population by census tract.

The Census population in 2010 was 41,250. Since then we have annexed property and Urbana's population is now 41,325. Dividing that by seven gives us a goal of 5,912 people per ward.

The initial problem: Ward 6 is 1,768 over the standard of 5,912 people, Ward 4 is 1,063 under, Ward 7 is 479 under and Ward 5 is 303 under.

The re-map meets the required legal standards:

1. **Equal population:** This draft brings all wards closer to 5,912.
2. **No more than 10% deviation plus or minus from the 5,912 (591 person variance up or down) is allowable:** This draft brings all wards well within this standard.
3. **Compact and contiguous:** The proposal makes wards 4, 5, 6 and 7 more compact. Wards 1, 2 and 3 remain compact. All remain contiguous.
4. **No under-representation of minorities:** All continue to meet this standard.

Other considerations:

1. No council members are put together in the same ward.
2. The number of precinct splits is reduced from 11 to 8.
3. The wards on the outer borders of the city are slightly smaller to allow for their greater growth potential during the next ten years.

The chart below summarizes the ward-to-ward population shifts and details the specific census tracts which have been shifted from one ward to another. On the map the biggest changes are moving the triangle-shaped precinct (CN 20) to Ward 4 from Ward 6 along with three census tracts in precinct CN 16. The next biggest change is shifting the rectangle at the bottom of CN 22 to Ward 7 from Ward 6. The other adjustments are single census tracts shifted from Ward 6 to Ward 5, from Ward 5 to Ward 2, and from Ward 4 to Ward 1.




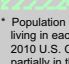
Apparent Census Error in Ward 3: We believe the census tract listing 1,481 people overstates the actual population by about 900 people. We cannot correct the official census. However, we are compensating for this error by having the population in Ward 3 appear to be 415 people over the average. (In reality we believe it is actually about 500 people under.)

The proposed re-map and the detailed chart with changes by census tract are on the city web site for public comment. Suggestions for changes may be e-mailed to me: lprussing@urbanaininois.us.

Ward	2010 pop.	Dev. from 5,912	Ward 6 to 5	Ward 6 to 4	Ward 6 to 7	Ward 4 to 1	Ward 5 to 2	Revised	Revised Deviation
1	5657	-255				60		5717	-195
2	5821	-91					2	5823	-89
3	6327	415						6327	415
4	4858	-1063		1282		-60		6080	168
5	5609	-303	84				-2	5691	-221
6	7680	1768	-84	-1282	-577			5737	-175
7	5433	-479			577			6010	98
Total	41385							41385	
Detail of revisions by Census tract:									
From Ward 6 to Ward 4: 50+60+55+50+58+42+42+29+81+36+109+99+31+34+52+6+32+115+34+23+28+21+153+42 totals 1282									
From Ward 6 to Ward 7: 31+79+48+40+72+66+54+33+33+28+93 totals 577									
From Ward 6 to Ward 5: 84									
From Ward 4 to Ward 1: 60									
From Ward 5 to Ward 2: 2									



PROPOSED City Council Wards

-  Census Block Population*
-  Precincts
-  City Council Ward
-  Proposed Ward Addition

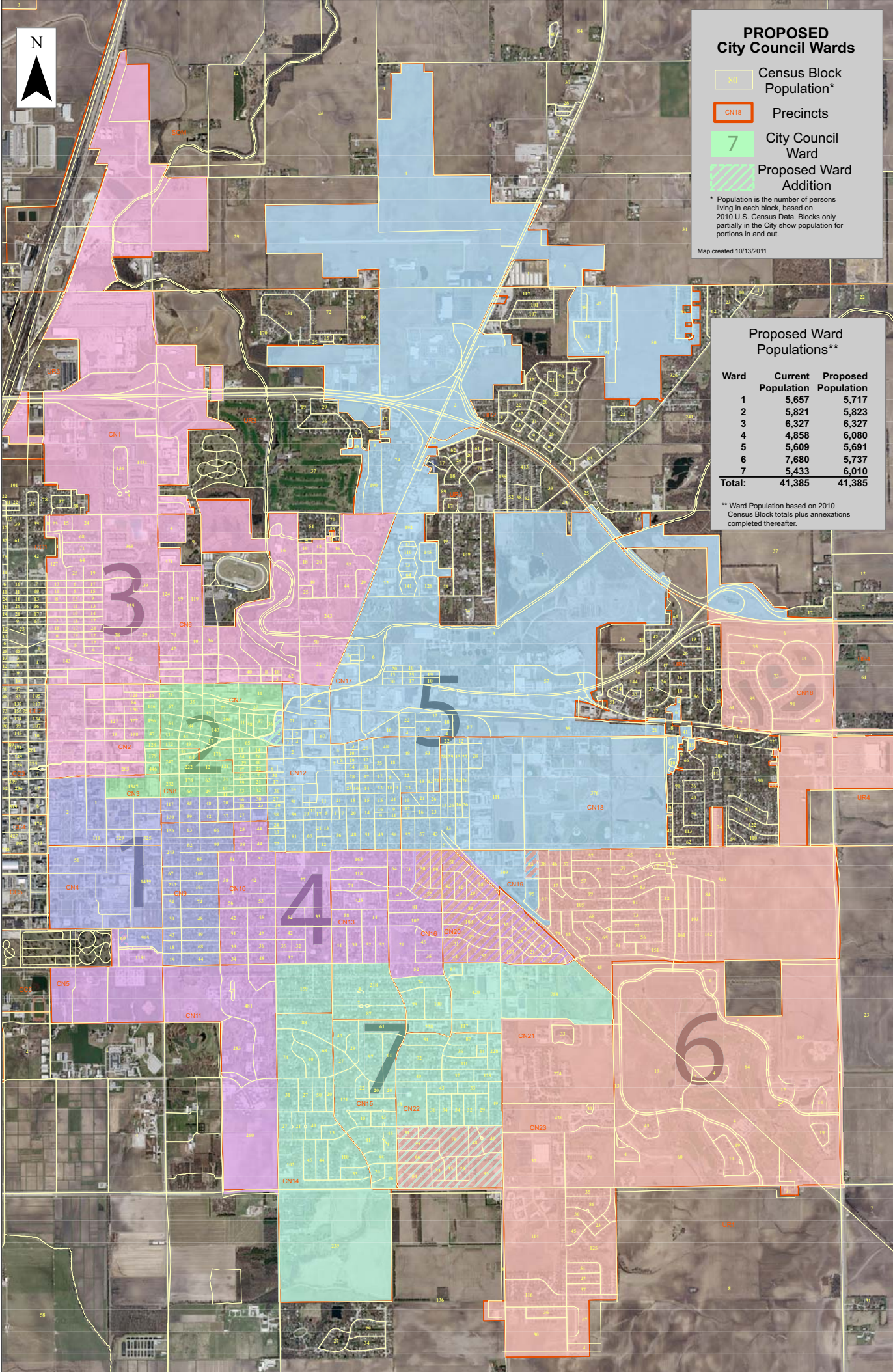
* Population is the number of persons living in each block, based on 2010 U.S. Census Data. Blocks only partially in the City show population for portions in and out.

Map created 10/13/2011

Proposed Ward Populations**

Ward	Current Population	Proposed Population
1	5,657	5,717
2	5,821	5,823
3	6,327	6,327
4	4,858	6,080
5	5,609	5,691
6	7,680	5,737
7	5,433	6,010
Total:	41,385	41,385

** Ward Population based on 2010 Census Block totals plus annexations completed thereafter.



ORDINANCE NO. 2011-10-116

**AN ORDINANCE REDISTRICTING THE WARDS OF THE CITY OF URBANA,
ILLINOIS**

(2011)

WHEREAS, Section 3.1-20-25 of the Illinois Municipal Code (65 ILCS 5/3.1-20-25) provides that the city council of a city, by ordinance, shall redistrict the city into wards as nearly equal in population and as compact and contiguous territory as practicable based upon the results of an official census; and

WHEREAS, the 2010 Census conducted by the United States Census Bureau reveals that numerical inequalities exist in the population among City of Urbana, Illinois, wards as currently drawn; and

WHEREAS, the City Council of the City of Urbana, Illinois, desires to establish new ward boundaries that are of as compact and contiguous territory as practicable, with each ward having nearly equal population.

NOW, THEREFORE, BE IT ORDAINED by the City Council of the City of Urbana, Champaign County, Illinois, as follows:

Section 1.

Ordinance No. 2004-04-043, passed on April 19, 2004, which established the ward boundaries for each of the seven wards of the City of Urbana, Illinois, be and the same is hereby repealed upon the taking effect of this ordinance.

Section 2.

The ward boundaries for each of the seven wards of the City of Urbana, Illinois, as designated and set forth in the document entitled "Official Ward Map of the City of Urbana, Champaign County, Illinois, (2011)," together with a description of the ward boundaries of each in words in the document entitled "Official Ward Descriptions of the City of Urbana, Champaign County, Illinois, (2011)," a copy of which said map and description in words are attached hereto and hereby incorporated by reference, be and the same are hereby adopted as the ward boundaries for each of the seven wards of the City of Urbana, Illinois, in accordance with this Ordinance. If there is a discrepancy between the ward boundary description by words and the map herein referred to, the word description shall prevail.

Section 3.

This Ordinance shall become effective immediately after its passage and approval as required by law and shall apply to any and all matters pertaining to the next and all succeeding general elections for city officers after the effective date hereof. This Ordinance shall not apply, however, to the composition of the present City Council of the City of Urbana and representation by each of its individual members until after the next general election of city officers, and all acts, resolutions, and ordinances of the City Council, which in other respects are in compliance with law, shall be deemed valid during this interim period until such newly elected city officers have been duly qualified in accordance with law.

Section 4.

The City Clerk is hereby authorized and directed to send a certified copy of

this Ordinance, including the map and written description adopted herein by reference, to the County Clerk of Champaign County, Illinois.

PASSED BY THE CITY COUNCIL this ____ day of _____, _____.

AYES:

NAYS:

ABSENT:

ABSTAINED:

Phyllis D. Clark, City Clerk

APPROVED BY THE MAYOR this ____ day of _____, _____.

Laurel Lunt Prussing, Mayor