

- RIGHT-OF-WAY
- - - PRIVATE ROAD
- - - ILLINOIS STREETS
- ==== RAILROAD TRACK
- ||||| CITY LIMITS

# CITY OF URBANA ENGINEERING DIVISION 2004 CONSTRUCTION

- ### LEGEND
- MAJOR BRICK SIDEWALK REPAIRS/REPLACEMENT
  - SLURRY SEAL/MICRO PAVING
  - RESURFACING/RECONSTRUCTION/CONSTRUCTION
  - SANITARY SEWER REPAIRS
  - SANITARY SEWER LINING
  - STORM SEWER INSTALLATION/REPAIRS
  - STORM SEWER LINING
  - BIKE PATH CONSTRUCTION
  - PAVEMENT PATCHING
  - TRAFFIC SIGNAL INSTALLATION/MODERNIZATION/UPGRADING
  - STREETSCAPE/MINI PARKS/ENTRY WAYS



04/20/04





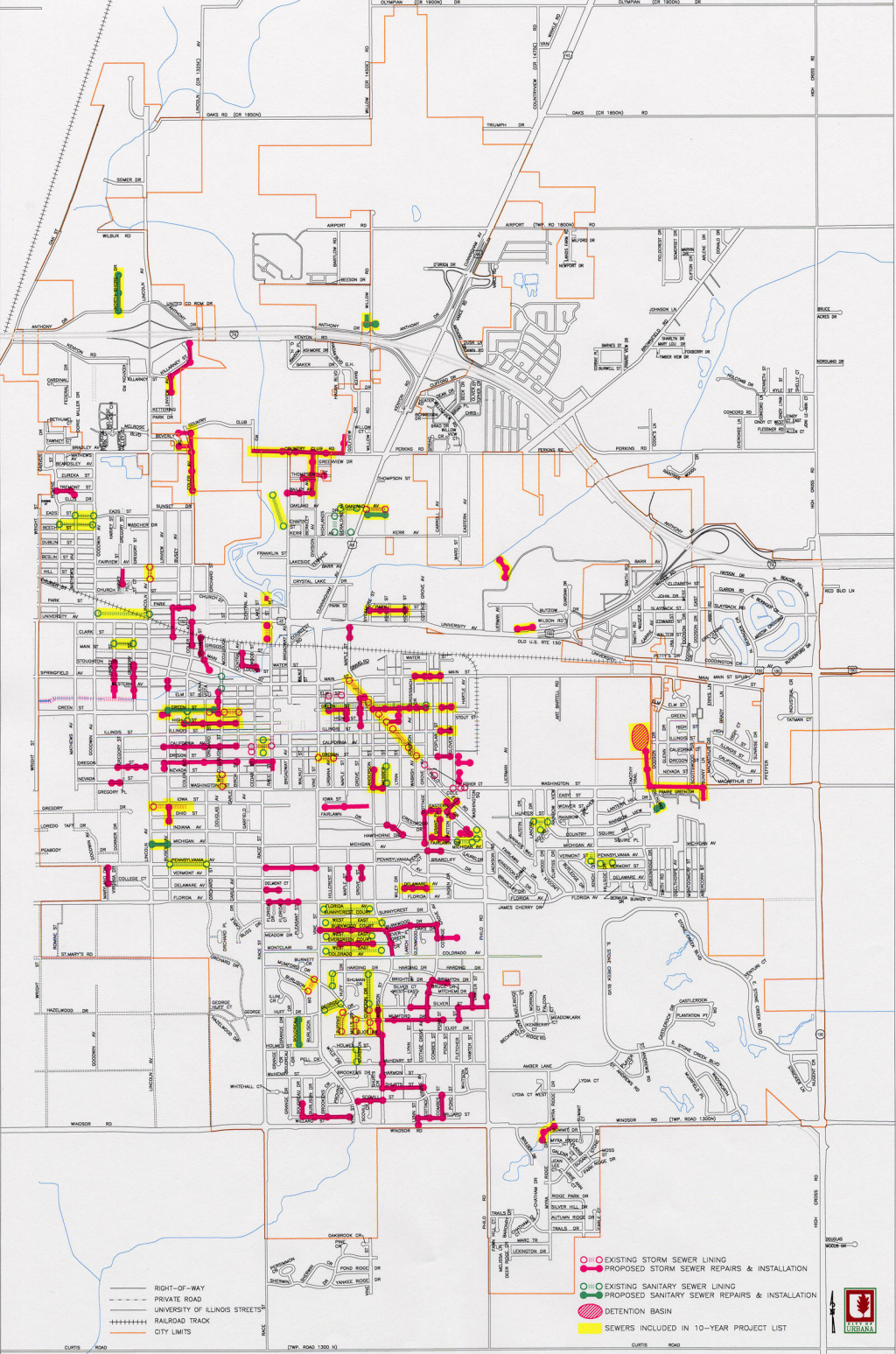


FIGURE A  
PROPOSED SEWER PROJECTS





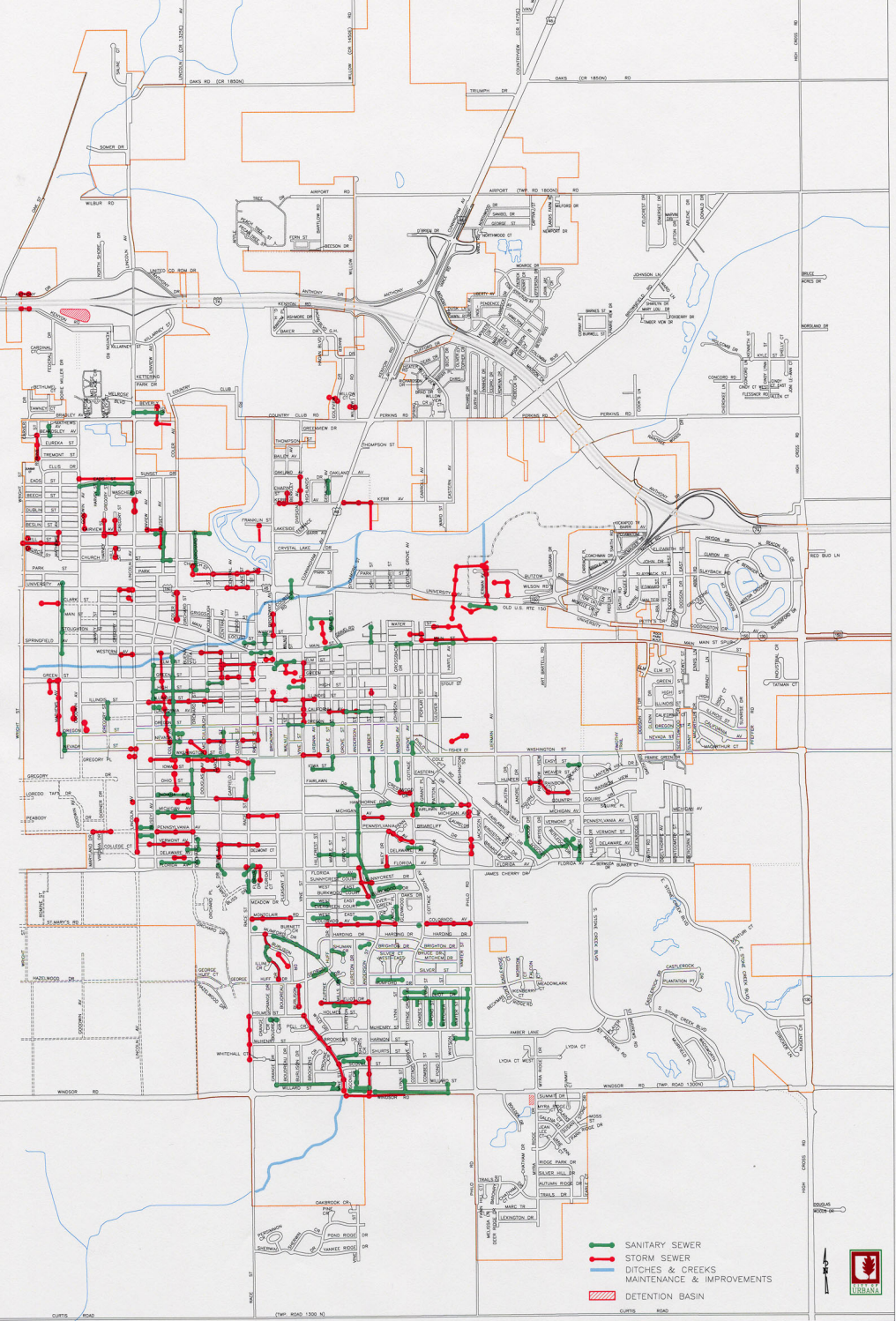
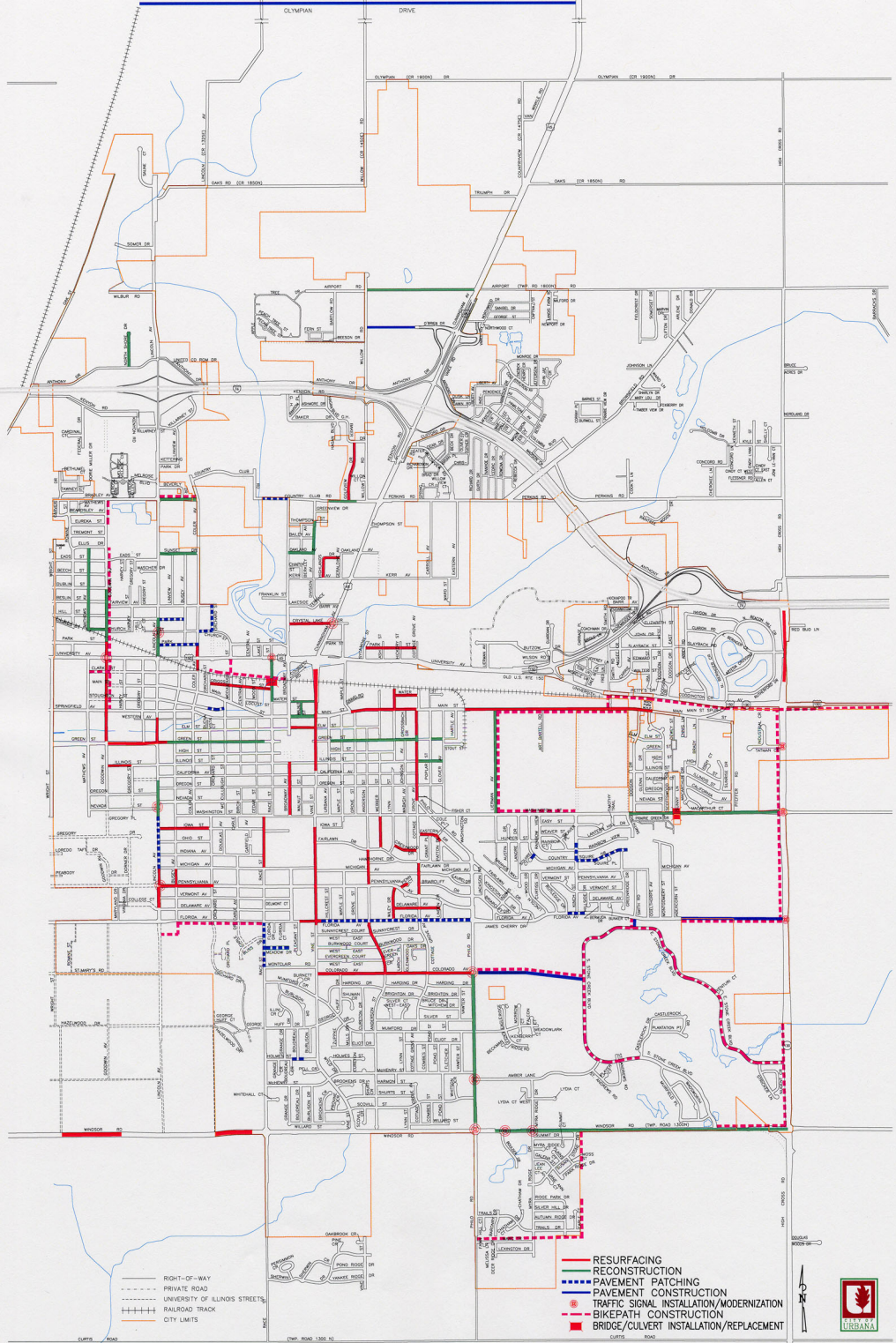


FIGURE B  
SEWER PROJECTS COMPLETED SINCE 1981



**FIGURE C**  
**PROJECTED TEN YEAR MAJOR STREET RESURFACING, RECONSTRUCTION,**  
**CONSTRUCTION, TRAFFIC SIGNALS, BIKEPATHS, & BRIDGES**



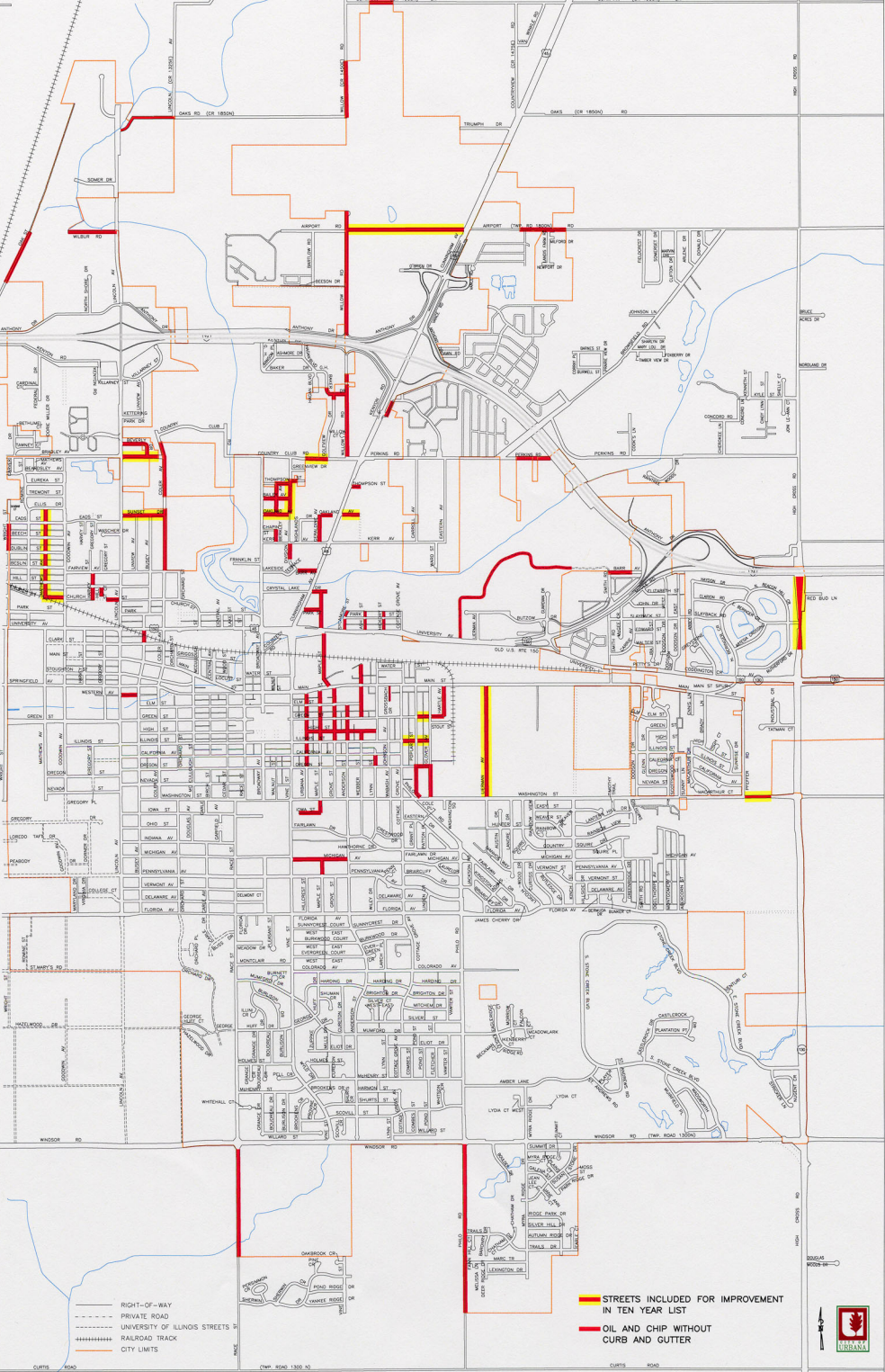
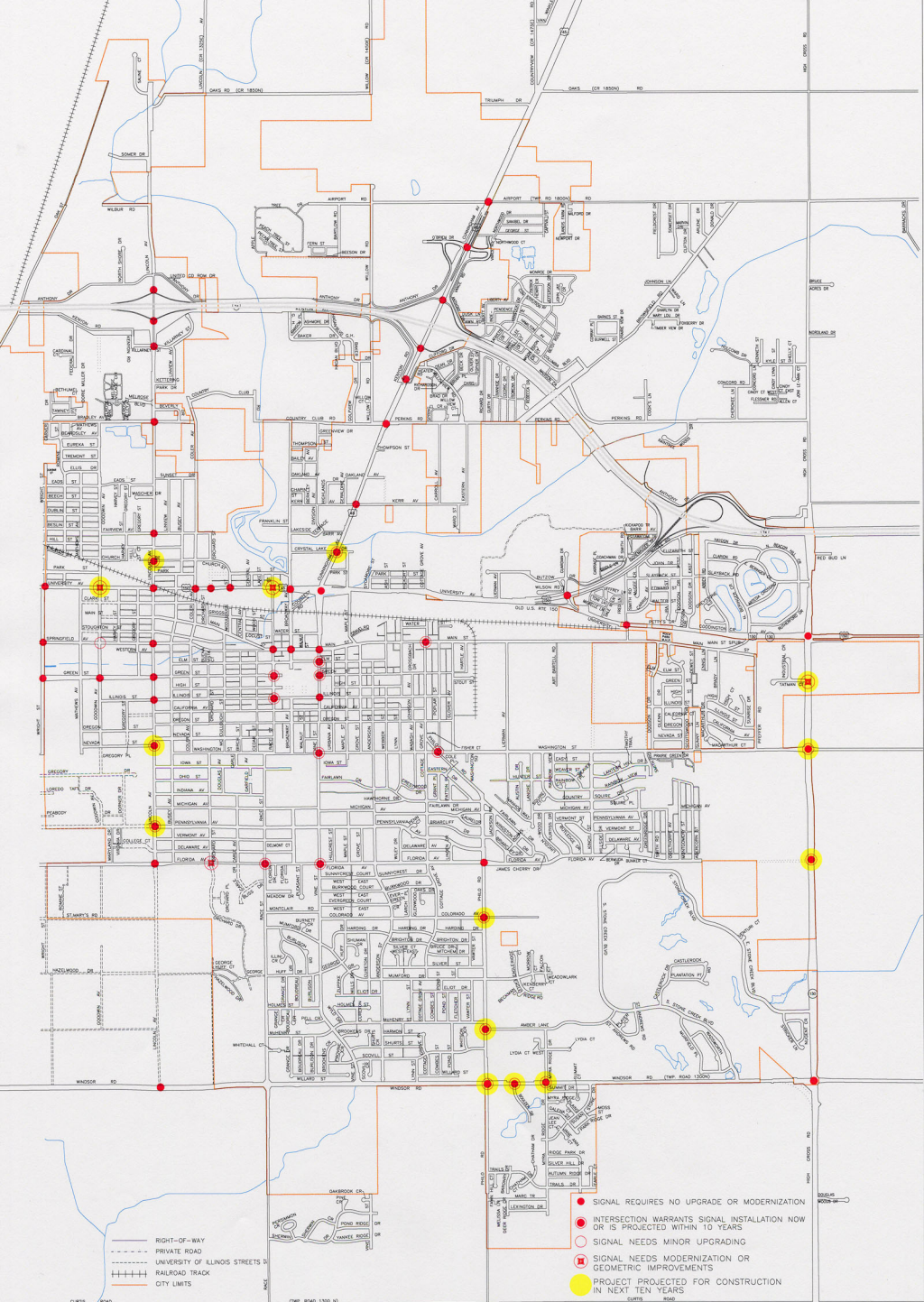


FIGURE D  
OIL AND CHIP STREETS WITHOUT CURB AND GUTTER





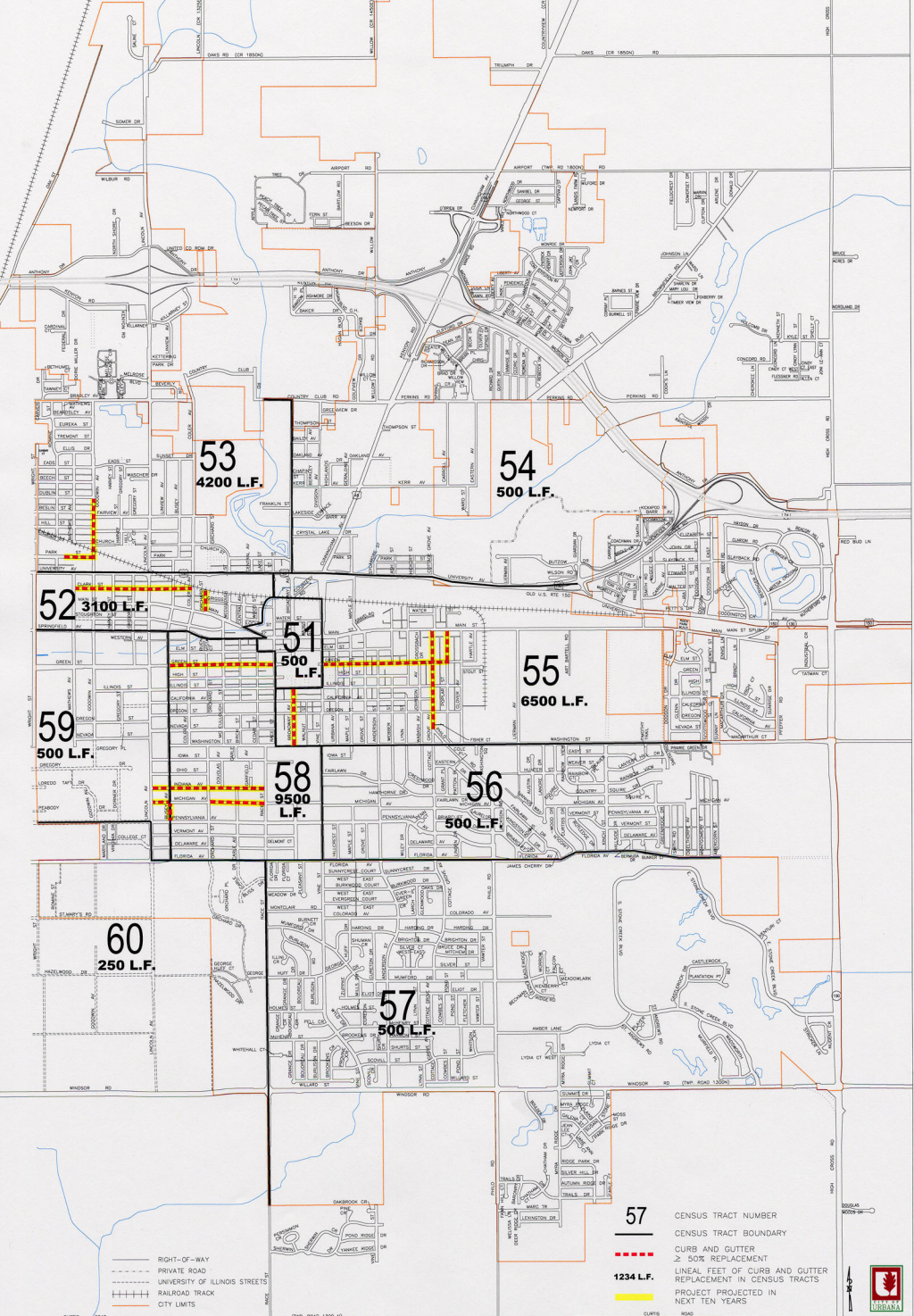


——— RIGHT-OF-WAY  
 - - - - PRIVATE ROAD  
 - - - - UNIVERSITY OF ILLINOIS STREETS  
 - - - - RAILROAD TRACK  
 - - - - CITY LIMITS

- SIGNAL REQUIRES NO UPGRADE OR MODERNIZATION
- INTERSECTION WARRANTS SIGNAL INSTALLATION NOW OR IS PROJECTED WITHIN 10 YEARS
- SIGNAL NEEDS MINOR UPGRADING
- SIGNAL NEEDS MODERNIZATION OR GEOMETRIC IMPROVEMENTS
- PROJECT PROJECTED FOR CONSTRUCTION IN NEXT TEN YEARS

**FIGURE E**  
**TRAFFIC SIGNALS**





- RIGHT-OF-WAY
- - - PRIVATE ROAD
- - - UNIVERSITY OF ILLINOIS STREETS
- RAILROAD TRACK
- CITY LIMITS

- 57 CENSUS TRACT NUMBER
- CENSUS TRACT BOUNDARY
- - - CURB AND GUTTER  
≥ 50% REPLACEMENT
- LINEAL FEET OF CURB AND GUTTER  
REPLACEMENT IN CENSUS TRACTS
- PROJECT PROJECTED IN  
NEXT TEN YEARS



FIGURE F  
MAJOR CURB AND GUTTER MAINTENANCE







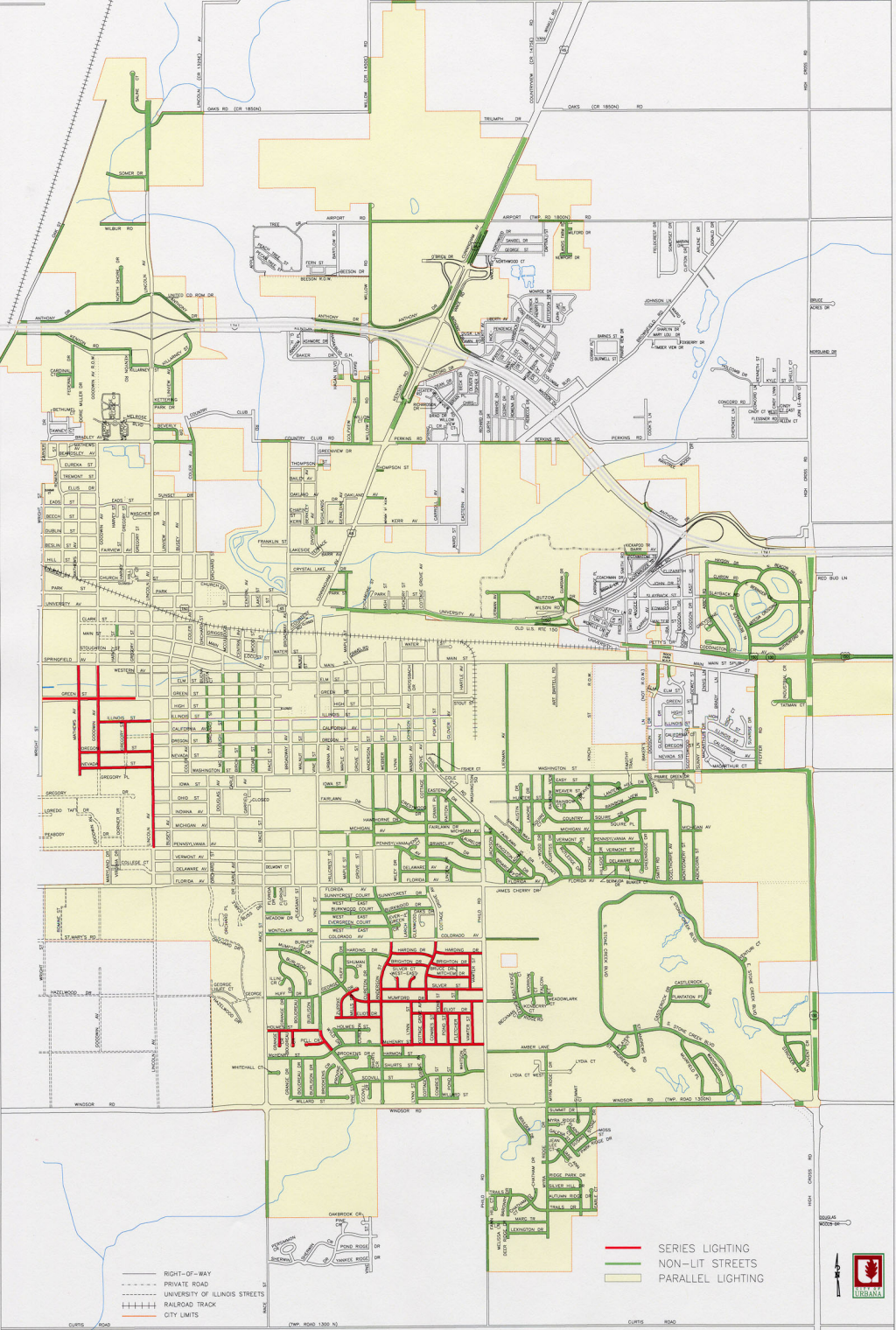
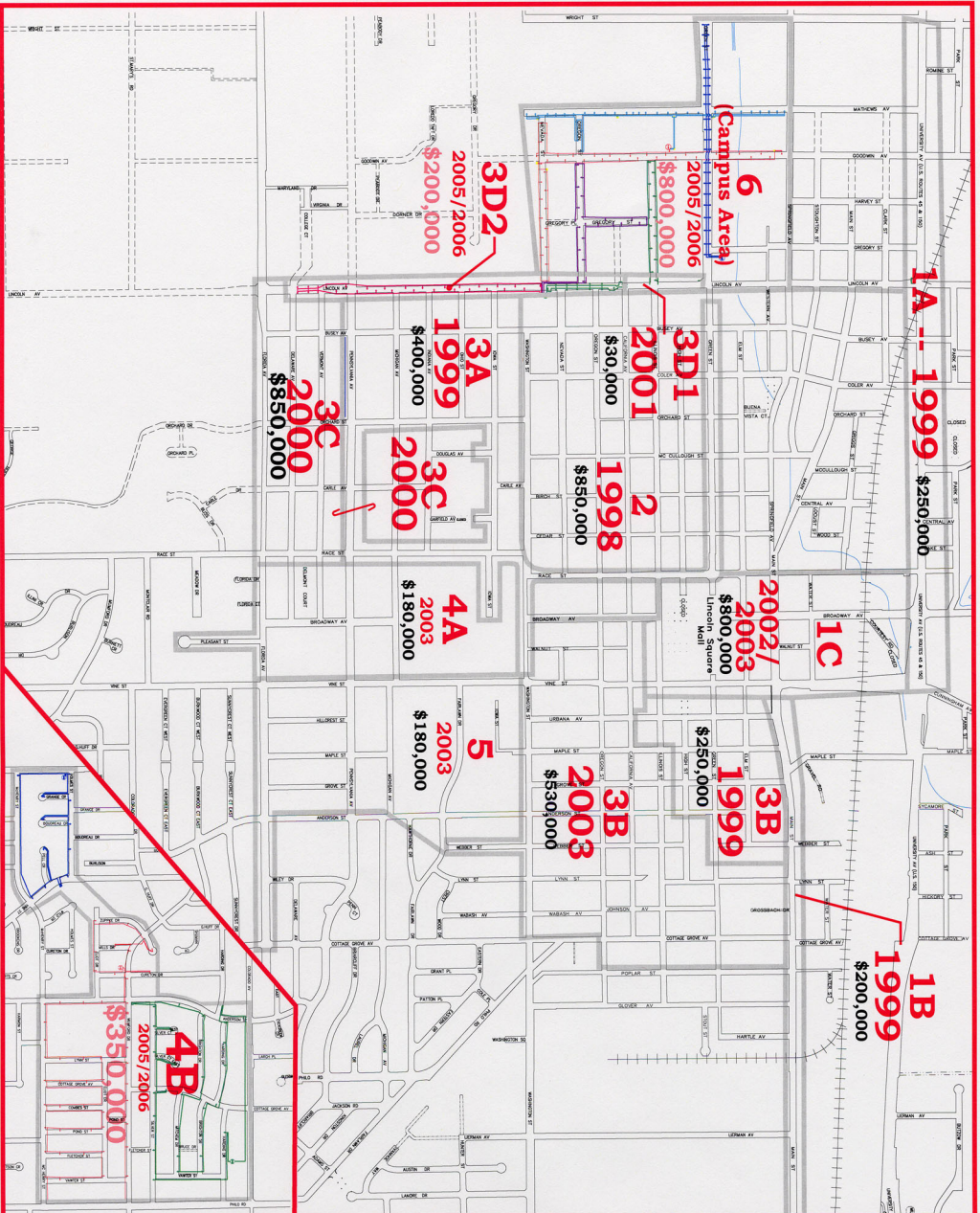


FIGURE H  
STREET LIGHTING





**ENGINEERING  
DIVISION  
CAPITAL  
IMPROVEMENT  
PLAN**

**LEGEND:**

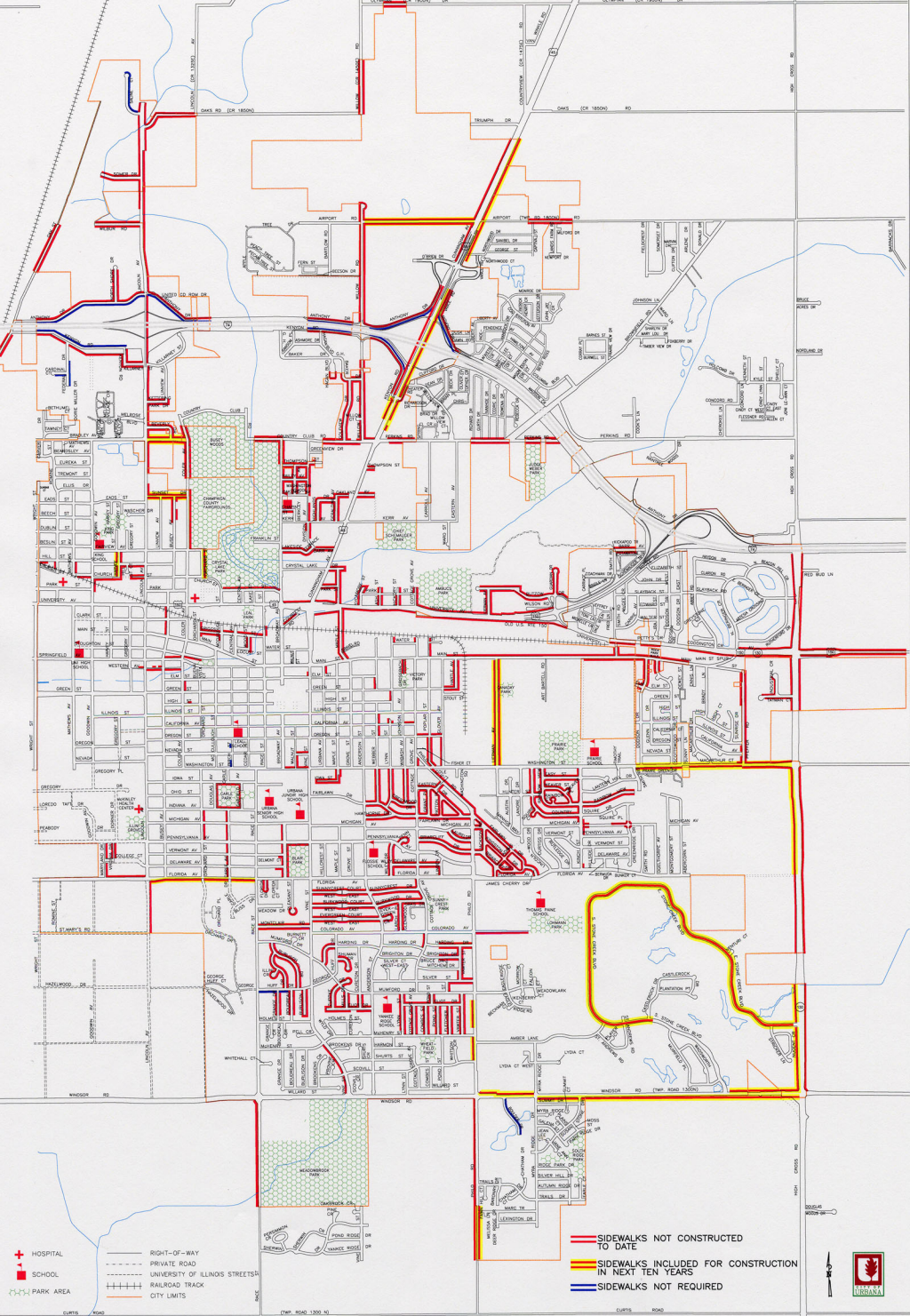
- RIGHT-OF-WAY
- PRIVATE ROAD OR INACCESSIBLE R.O.W.
- UNIVERSITY OF ILLINOIS STREETS
- RAILROAD TRACK
- EXISTING SERIES LIGHTING CIRCUIT
- AREA BOUNDARY
- 6A** AREA NUMBER
- \$100,000** COMPLETED PROJECT COST
- \$100,000** ESTIMATED PROJECT COST

NOTE: COSTS HAVE BEEN REVISIED TO REFLECT BIDS & INCLUDE DESIGN COSTS

**SERIES LIGHTING  
REPLACEMENT  
PRIORITIES  
LOCATION MAP**

FIGURE I  
SERIES LIGHTING REPLACEMENT PRIORITIES LOCATION MAP





**FIGURE J  
SIDWALK CONSTRUCTION**



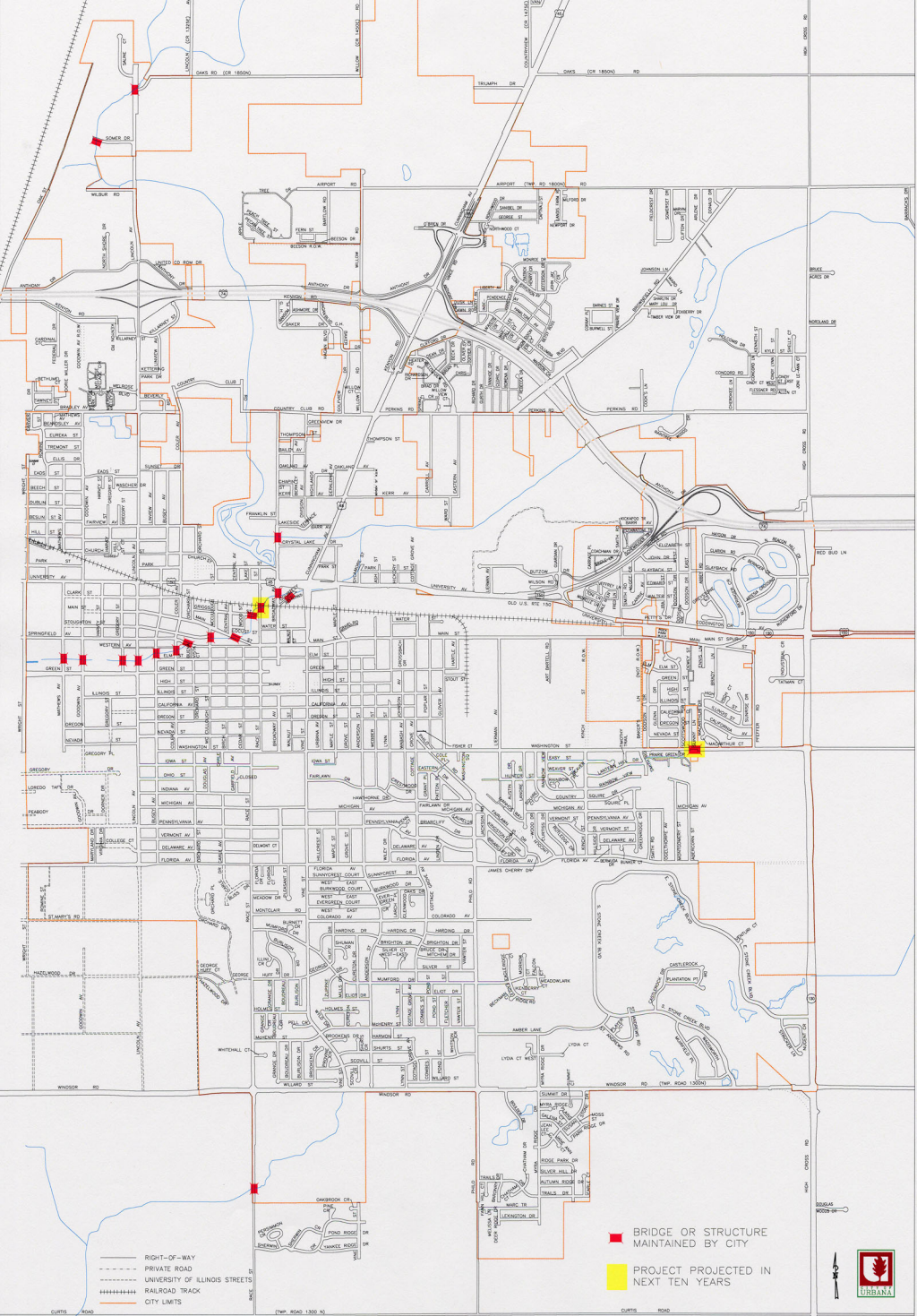
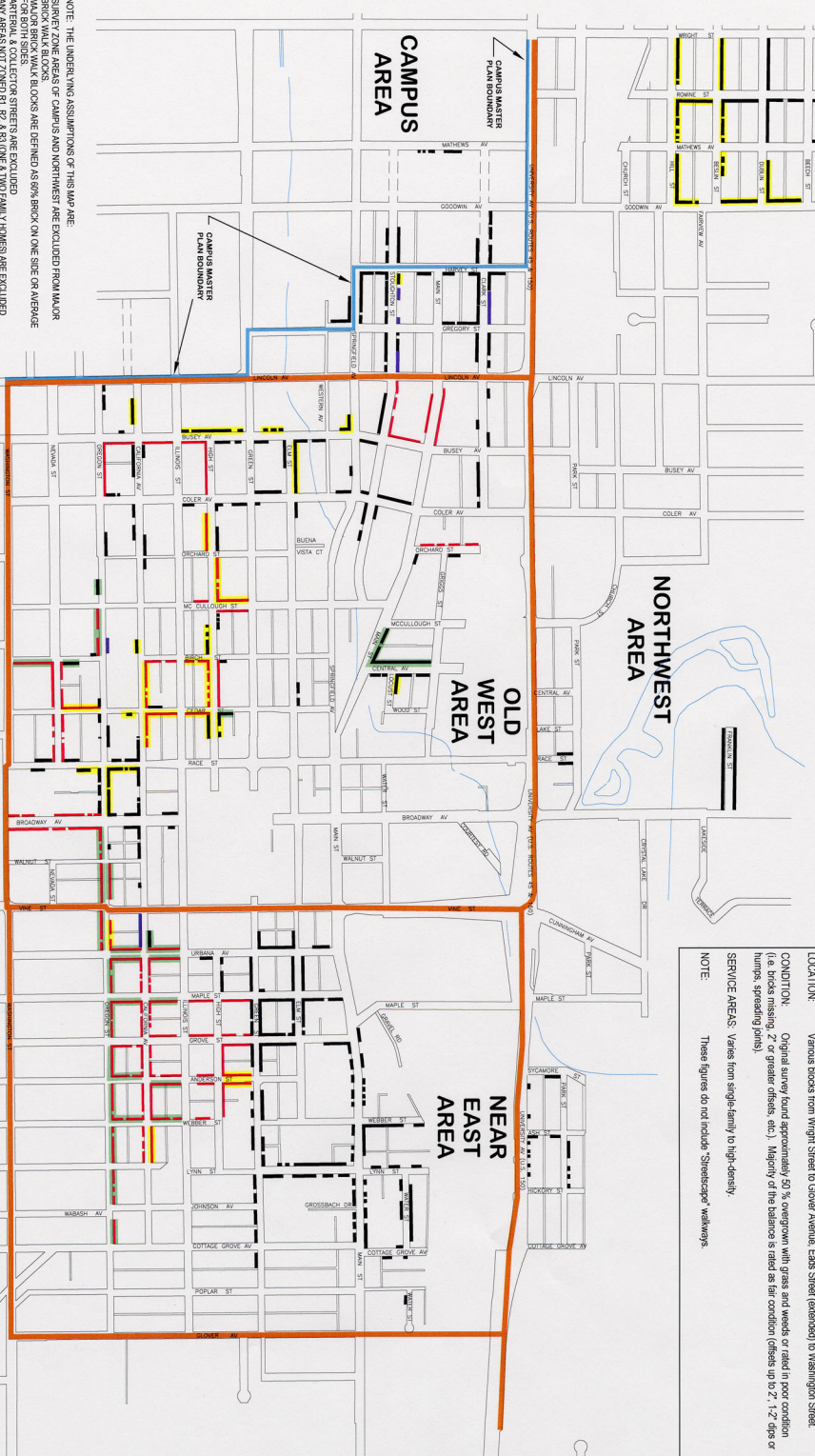


FIGURE L  
BRIDGES AND STRUCTURES



# BRICK SIDEWALK PROGRAM



- NOTE: THE UNDERLYING ASSUMPTIONS OF THIS MAP ARE:
1. SERVICE ZONE AREAS OF CAMPUS AND NORTHWEST ARE EXCLUDED FROM MAJOR
  2. MAJOR BRICK WALK BLOCKS ARE DEFINED AS 60% BRICK ON ONE SIDE OR AVERAGE
  3. FOR BOTH SIDES
  4. ANY AREAS NOT ZONED R-1, R-2 & R3 (ONE & TWO FAMILY HOMES) ARE EXCLUDED

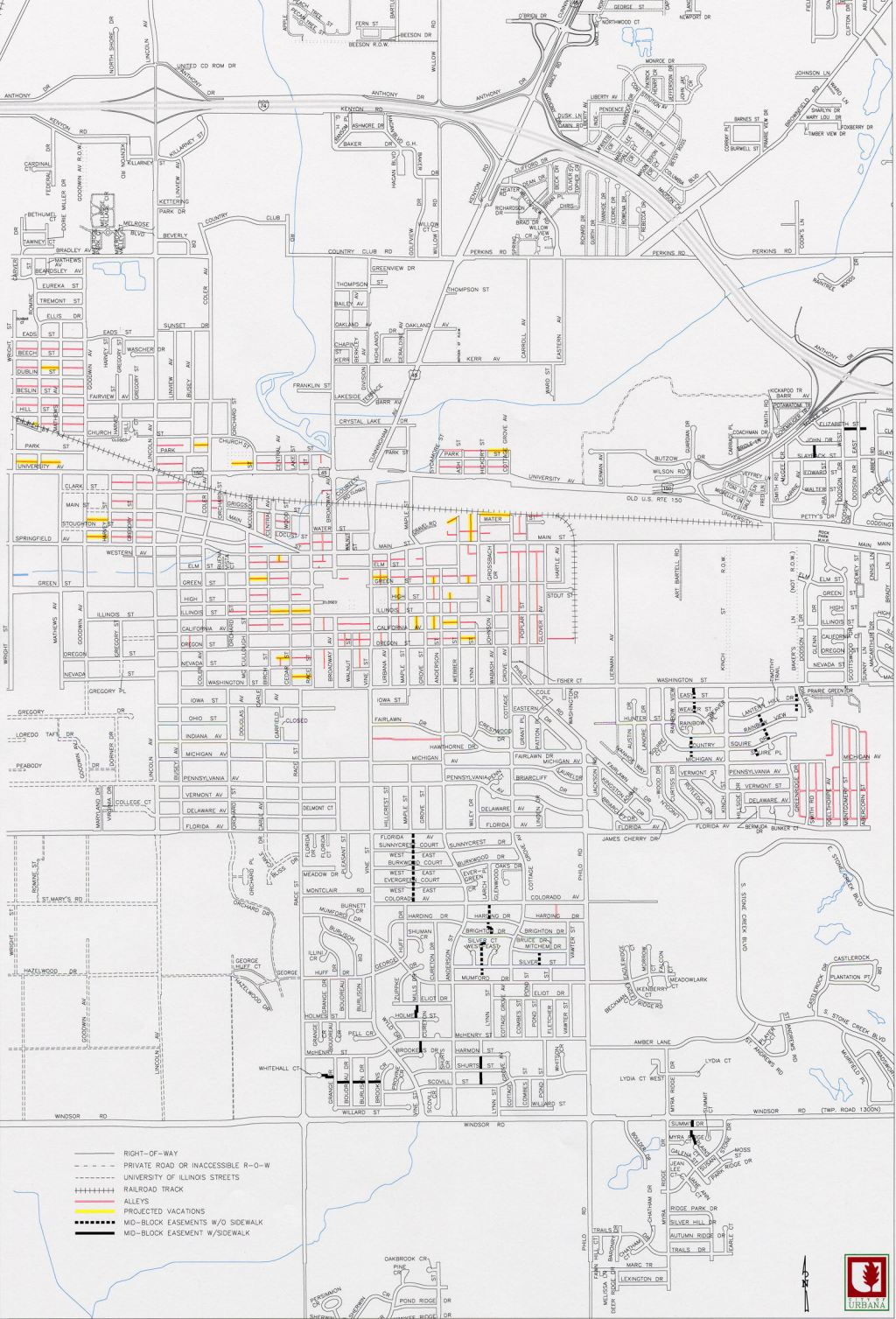
- CAMPUS BOUNDARY
- MAJOR BOUNDARY
- MAJOR BRICK WALK BLOCKS BY CITY ORIGINANCE
- RECONSTRUCTION ON REPAIRS COMPLETED IN BRICK
- REPAIRS IN PROGRESS
- BRICK SIDEWALKS BY CITY ORIGINANCE
- BRICK SIDEWALKS TO BE REPAIRED OR REPLACED WITH BRICK
- BRICK SIDEWALKS TO BE REPAIRED OR REPLACED WITH CONCRETE ONLY IF PROPERTY OWNERS DOES NOT WANT TO KEEP IT AS A BRICK SIDEWALK
- MAJOR BRICK WALK BLOCKS BY CITY ORIGINANCE
- MAJOR BRICK WALK BLOCKS TO BE REPAIRED OR REPLACED WITH BRICK
- MAJOR BRICK WALK BLOCKS TO BE REPAIRED OR REPLACED WITH CONCRETE ONLY IF PROPERTY OWNERS DOES NOT WANT TO KEEP IT AS A BRICK SIDEWALK
- MAJOR BRICK WALK BLOCKS TO BE REPAIRED OR REPLACED WITH CONCRETE ONLY IF PROPERTY OWNERS DOES NOT WANT TO KEEP IT AS A BRICK SIDEWALK

- RECONSTRUCTION ON REPAIRS COMPLETED IN BRICK
- REPAIRS IN PROGRESS
- BRICK SIDEWALKS BY CITY ORIGINANCE
- BRICK SIDEWALKS TO BE REPAIRED OR REPLACED WITH BRICK
- BRICK SIDEWALKS TO BE REPAIRED OR REPLACED WITH CONCRETE ONLY IF PROPERTY OWNERS DOES NOT WANT TO KEEP IT AS A BRICK SIDEWALK
- MAJOR BRICK WALK BLOCKS BY CITY ORIGINANCE
- MAJOR BRICK WALK BLOCKS TO BE REPAIRED OR REPLACED WITH BRICK
- MAJOR BRICK WALK BLOCKS TO BE REPAIRED OR REPLACED WITH CONCRETE ONLY IF PROPERTY OWNERS DOES NOT WANT TO KEEP IT AS A BRICK SIDEWALK

BRICK SIDEWALK FACTS	
TOTAL LENGTH:	Approximately 50,000 linear feet (not including sections at intersection corners)
WIDTH:	Varies from 4.5 feet to 4.75 feet.
LOCATION:	Various blocks from Wright Street to Glover Avenue, Ellis Street (extended) to Washington Street.
CONDITION:	Original survey found approximately 50 % overgrown with grass and weeds or railed in poor condition (i.e. cracks missing, 2" or greater offsets, etc.). Majority of the balance is railed as fair condition (offsets up to 2", 1/2 dips or humps, spreading joints).
SERVICE AREAS:	Varies from single-family to high-density.
NOTE:	These figures do not include "StreetScope" walkways.

FIGURE M  
EXISTING BRICK SIDEWALKS



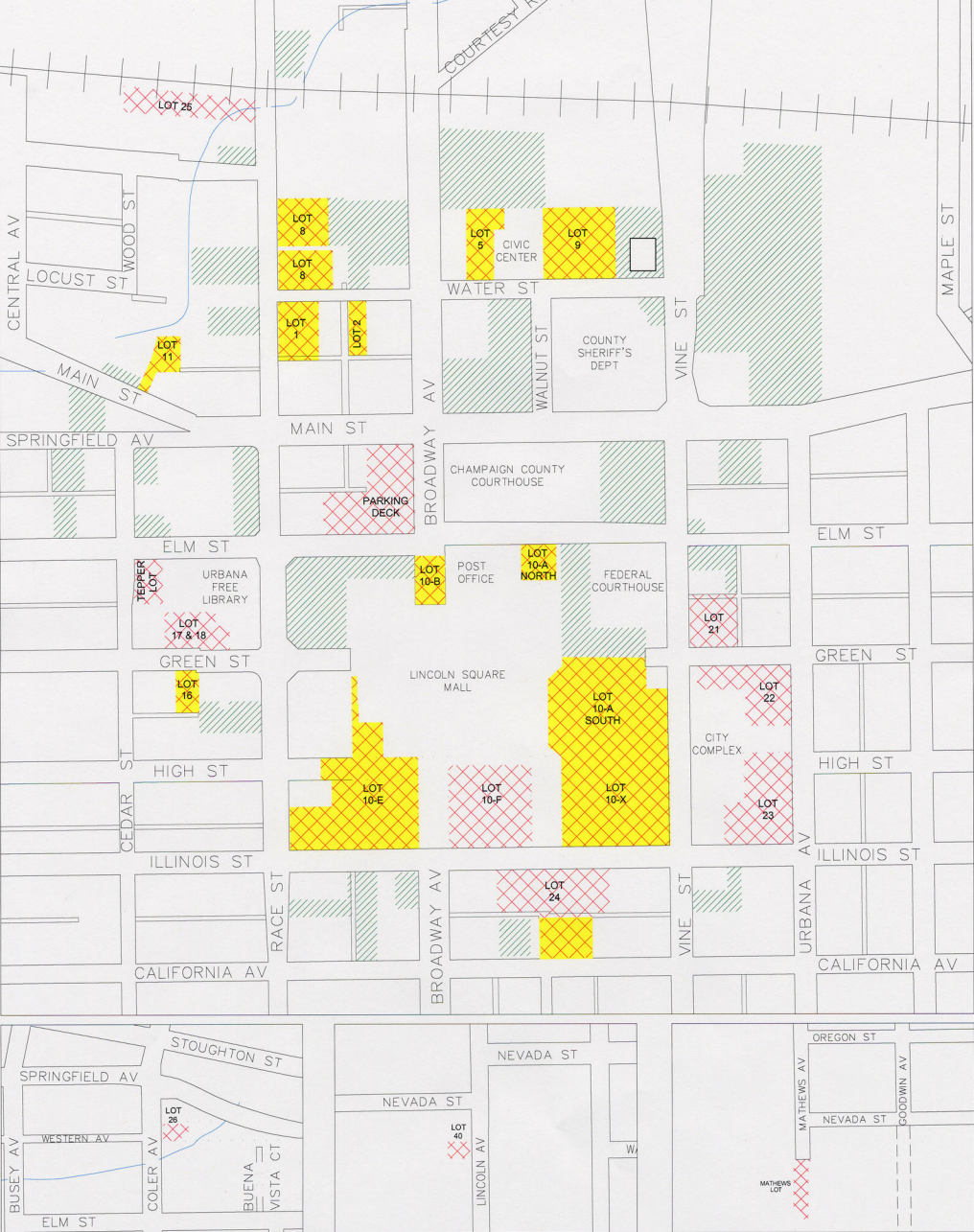


- RIGHT-OF-WAY
- - - PRIVATE ROAD OR INACCESSIBLE R-O-W
- - - UNIVERSITY OF ILLINOIS STREETS
- RAILROAD TRACK
- ALLEYS
- PROJECTED VACATIONS
- MID-BLOCK EASEMENTS W/O SIDEWALK
- MID-BLOCK EASEMENT W/SIDEWALK


FIGURE N  
ALLEYS & MID-BLOCK EASEMENTS







# CITY OF URBANA, ILLINOIS DOWNTOWN PARKING LOTS

 PUBLIC PARKING LOTS

 PRIVATE PARKING LOTS


 PROJECTED RECONSTRUCTION/RESURFACING  
IN NEXT 10 YEARS

FIGURE O  
DOWNTOWN PARKING LOTS





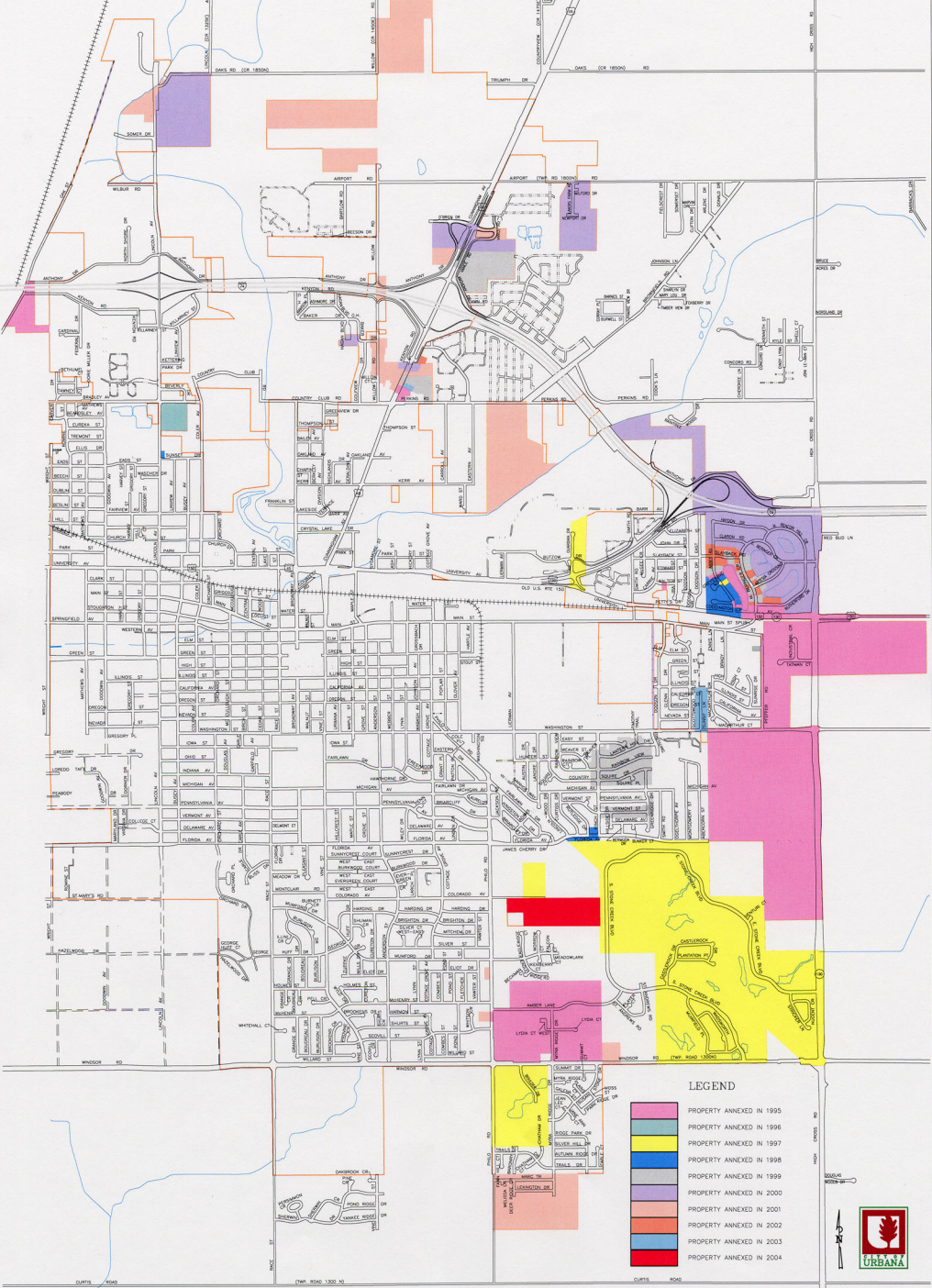


FIGURE P  
ANNEXATION MAP



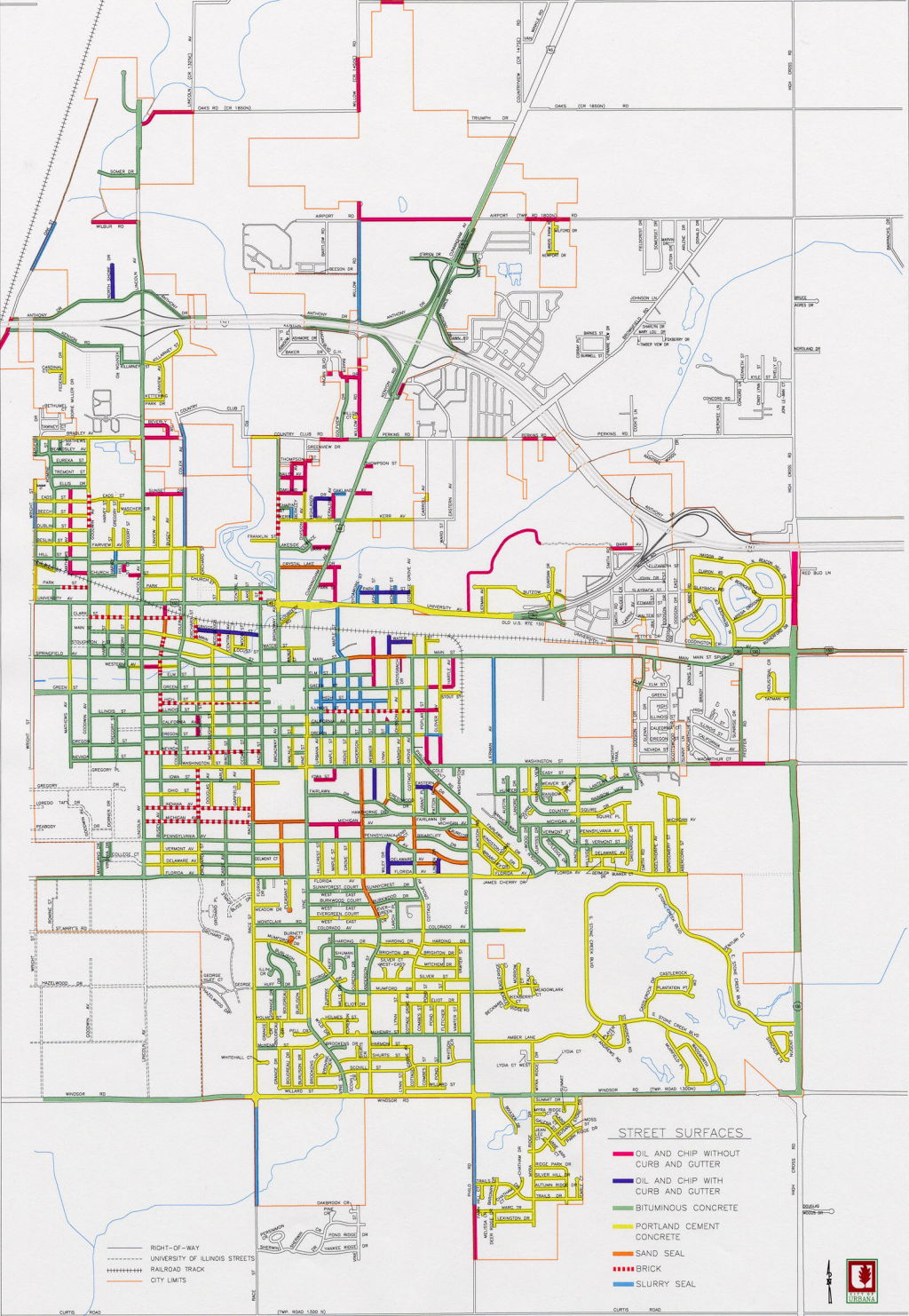


FIGURE Q  
EXISTING STREET SURFACES





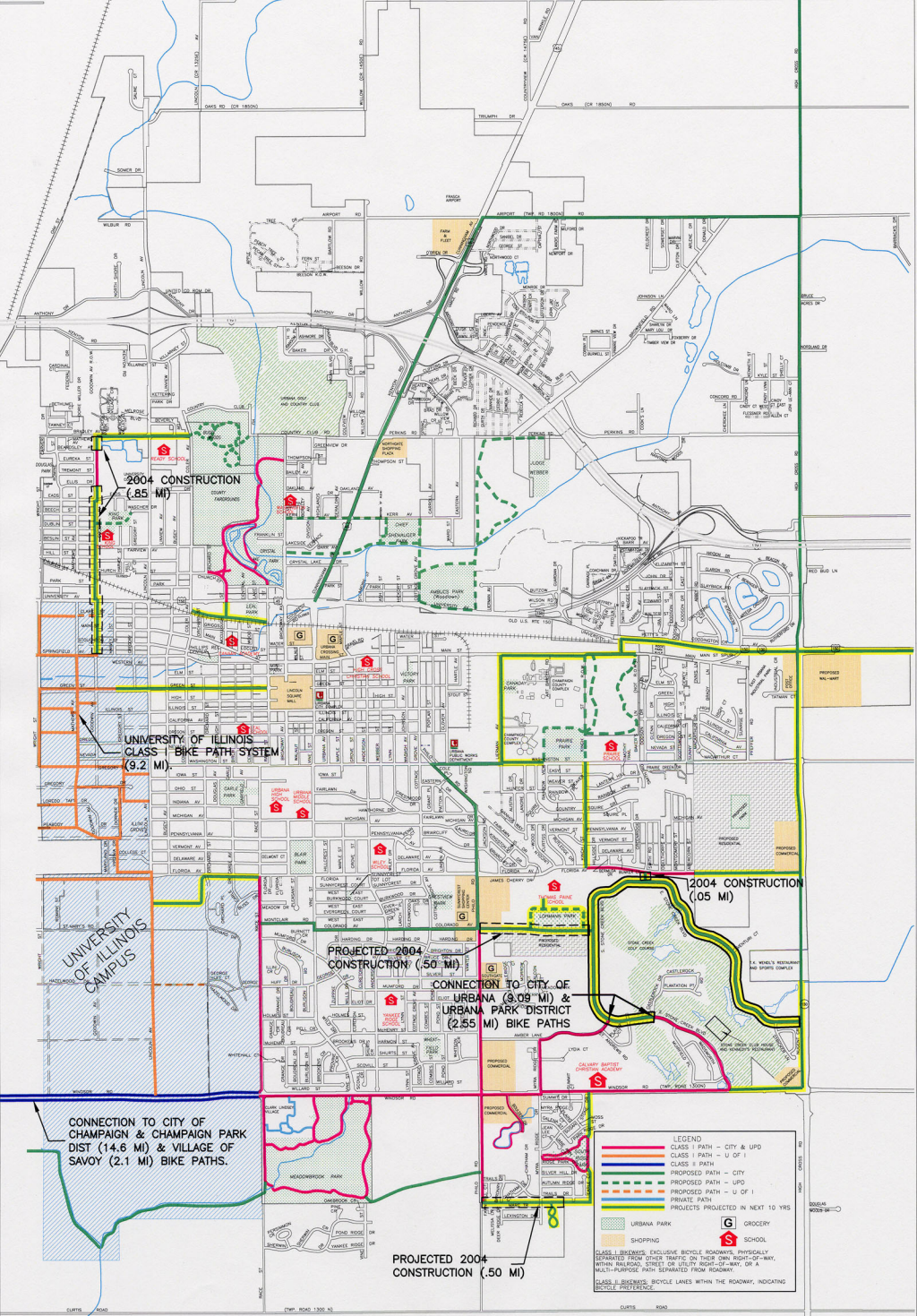


FIGURE R  
BIKE PATH SYSTEM

NORTH  
SCALE  
1"=2100'



