

STORMWATER UTILITIES



William R. Gray, Public Works Director
Gale L. Jamison, Assistant City Engineer
Bradley M. Bennett, Civil Engineer

URBANA'S SEWER SYSTEMS

STORM SEWER SYSTEM

129 MILES OF PIPE

7,763 INLETS AND MANHOLES

PIPE SIZE 6-INCHES TO 120-INCHES

ESTIMATED INFRASTRUCTURE
REPLACEMENT COST OF \$125 MILLION

FUNDING SOURCE - GENERAL REVENUES

2009-2010 BUDGET \$371,360

SANITARY SEWER SYSTEM

101 MILES OF PIPE

2,216 MANHOLES

PIPE SIZE 5-INCHES TO 15-INCHES

ESTIMATED INFRASTRUCTURE
REPLACEMENT COST OF \$761 MILLION

FUNDING SOURCE - SEWER BENEFIT FEE

2009-2010 BUDGET \$1,454,150

URBANA'S STORM SEWER SYSTEM



URBANA'S STORMWATER PROGRAM

- QUANTITY RELATED ACTIVITIES
 - Storm sewer pipe, manhole, and inlet repair or replacement
 - Ditch grading and mowing
 - Vine Street Viaduct Pump Station operation and maintenance
 - Storm sewer pipe, manhole, and inlet cleaning
 - Boneyard Creek inspection and maintenance
 - Regional detention facility maintenance
 - Hazardous sump pump discharge elimination program
 - Responding to citizen drainage concerns and property flooding issues

STORM SEWER REPAIRS



Broadway Avenue south of University Avenue

VINE STREET VIADUCT PUMP STATION



Flooding at discharge of Vine Street Pump Station

STORM SEWER CLEANING



City Staff and Vactor Truck

BONEYARD CREEK INSPECTIONS

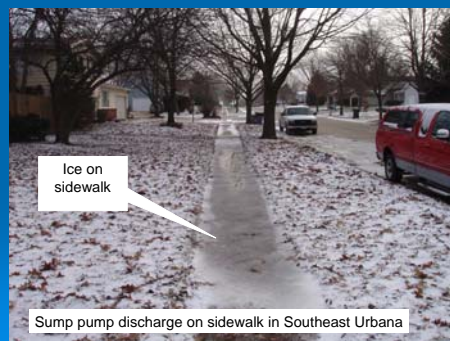


Engineering Technician Brad Osterbur at confluence with Saline

REGIONAL DETENTION FACILITY MAINTENANCE



HAZARDOUS SUMP PUMP DISCHARGES



PROPERTY FLOOD DAMAGE RESPONSE



URBANA'S STORMWATER PROGRAM

- > QUALITY RELATED ACTIVITIES (NPDES PHASE II)
 - New stormwater regulations (federal mandate)
 - New required activities (Best Management Practices):
 - Public education / public involvement
 - Erosion control
 - Pollution inspection and prevention
 - Post-development stormwater management
 - Changes in operations at municipal facilities
 - New enforcement requirements
 - Recordkeeping and annual reporting

NO ADDITIONAL STAFF OR FUNDING PROVIDED TO IMPLEMENT NPDES PHASE II REQUIREMENTS

PUBLIC EDUCATION



Presentation to Urbana Middle School Class

PUBLIC PARTICIPATION



Volunteers picking up trash during Boneyard Creek Community Day

EROSION CONTROL



Erosion control at Wal-Mart site

STREET SWEEPING



WHAT IS A STORMWATER UTILITY?

- A plan to accomplish long-term stormwater management
- A funding mechanism to implement and support the plan

WHY CONSIDER A STORMWATER UTILITY?

- Allows for implementation of an effective stormwater program
- Provides a dedicated funding source
- Funds mandated state and federal programs
- Provide an equitable fee schedule to implement programs
- Frees up general fund for other services

OTHER COMMUNITIES WITH STORMWATER UTILITIES

- Rantoul, IL
- Bloomington, IL
- Normal, IL
- Morton, IL
- Rock Island, IL
- Moline, IL

STORMWATER UTILITY KEY ISSUES

- How much will it cost?
- How will it be paid for?
- How will you gain acceptance?

Feasibility Study and Stakeholder Groups will provide answers to these questions!

STORMWATER UTILITY FUNDING SOURCES

- General fund
- Sales tax – City of Champaign
- Real estate tax
- Stormwater utility fee
- Special service area tax
- Federal and state grants

STORMWATER UTILITY IMPLEMENTATION STAGES

- Stormwater Utility Program Development
 - Feasibility Study
 - Develop program with Stakeholder Groups
 - Neighborhood Associations
 - Businesses, Organizations
 - Churches
 - University Representatives
 - School District Representatives
 - Meet with key potential ratepayers
 - Finalize program goals and financing methods
 - Develop and pass Stormwater Utility Ordinance

CONSEQUENCES OF INADEQUATE FUNDING FOR STORMWATER PROGRAM

- Broken and collapsed pipes, manhole, and inlets
- Increased flooding of streets and private property
- Diverts resources from sanitary sewer program
- Decreased water quality in local streams, creeks, and lakes
- Difficult to comply with State and Federal Regulations regarding storm water discharges
- Lack of additional storm water infrastructure being constructed to address problem areas

COLLAPSED PIPES



GOODWIN AVENUE AND BEECH STREET

BROKEN PIPES



DELAWARE STREET AND BUSEY AVENUE

STREET FLOODING



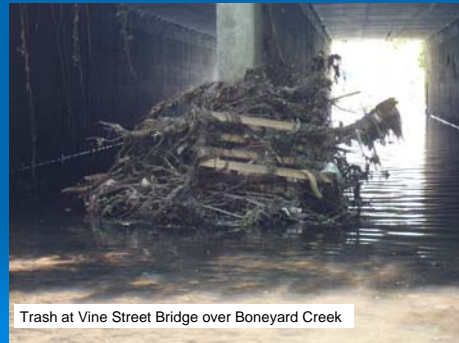
MAIN STREET AND HARTLE AVENUE ON 5/13/2009

PROPERTY FLOODING



204 HARTLE AVENUE ON 5/13/2009

WATER POLLUTION



Trash at Vine Street Bridge over Boneyard Creek

WATER POLLUTION



Trash in storm screen manhole at Bradley and Coler Avenues

QUESTIONS?