



## MEMORANDUM

**TO:** Mayor Laurel Lunt Prussing and Members of the City Council  
**FROM:** William R. Gray, Public Works Director  
**DATE:** April 3, 2008  
**RE:** Philo Road Beautification Design Development Plan Review

### Introduction

At the Committee of the Whole meeting on January 28, 2008, staff received direction by motion to proceed with the design development stage for the Philo Road Beautification Plan. The Philo Road Beautification Steering Committee was established and met on Monday, March 17<sup>th</sup> and again on Monday, March 31<sup>st</sup> to discuss more specific design elements to this beautification project on Philo Road between Florida Avenue and Colorado Avenue.

Attached please find black and white copies of plans, a cross-section, amenities, and cost estimates the steering committee has discussed. Color copies are available for viewing on the city website, [www.city.urbana.il.us](http://www.city.urbana.il.us). There will be an Open House to seek public input on this plan on Monday April 7<sup>th</sup> from 4:30 p.m. to 6:30 p.m. in the City Council Chambers. Afterwards at this Monday night's City Council meeting Mr. Garret Perry from Schreiber Anderson Associates (SAA) will present the attached material. Pending a City Council motion to accept the material as presented or as modified per City Council wishes, SAA will then embark on completing the plans and specifications. Pending City Council approval of the project and funding, construction would start this summer.

City staff concurrently are working with and coordinating efforts to landscape projects currently under constructing at the new Walgreens Building and the retail center at the former Kmart site. The owners of the Sunnycrest Mall and former Jewel Osco site have also expressed an interest in cooperating with private property landscaping. Remaining owners will be contacted as time permits. Consideration must be given to maintaining the landscaping once installed. Native plantings will need attention the first three years in order to become established and require less maintenance effort thereafter. Also, maintenance of landscaping on private property needs to be addressed between the city and the owner.

### Fiscal Impacts

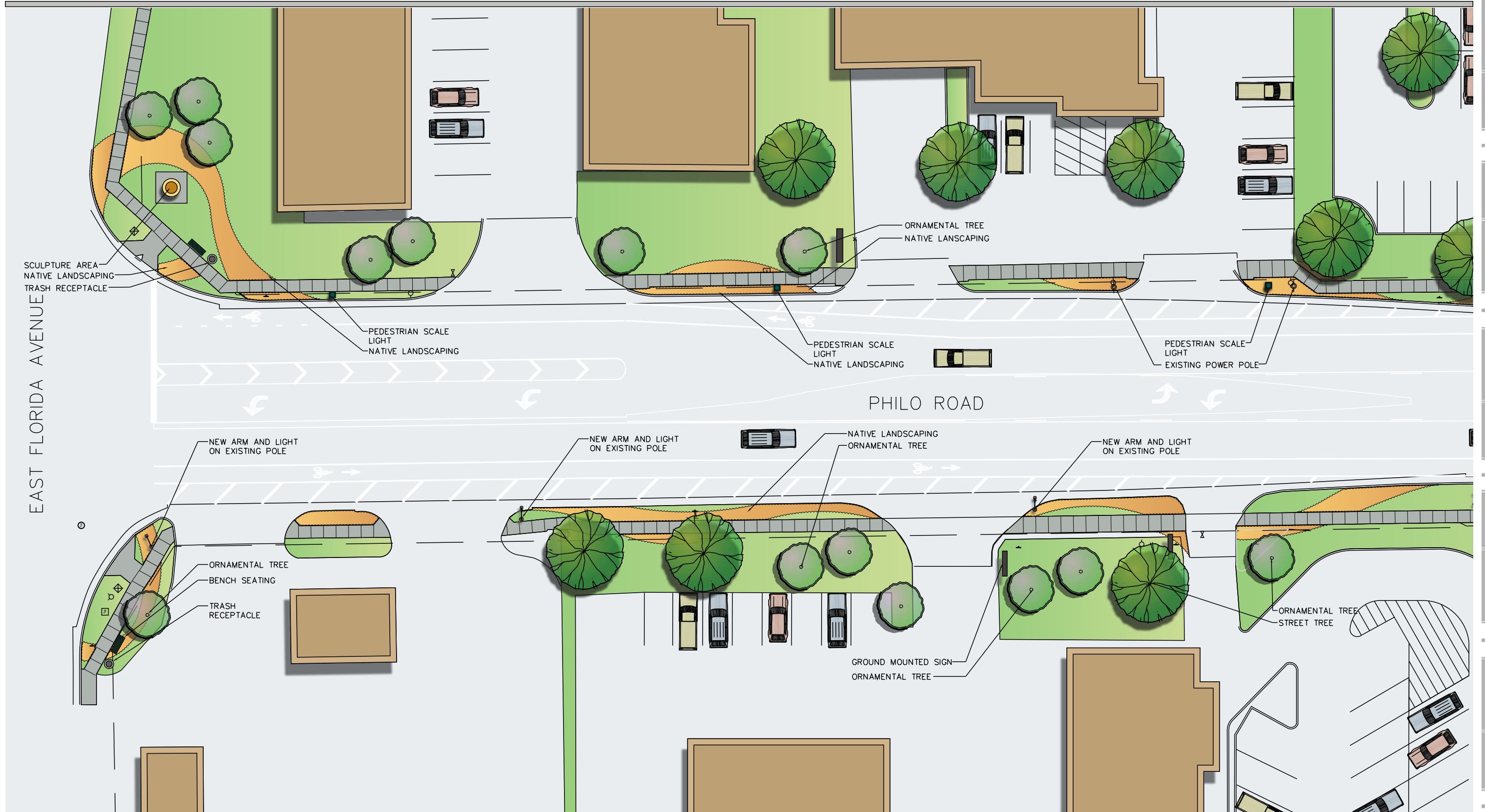
The current estimates for implementing this plan between Florida Avenue and Colorado Avenue including engineering fees, private property landscape costs, and planned Philo Road beautification costs is in the range of \$500,000 - \$650,000 depending on the extent of sidewalk removal work (remove existing four foot wide sidewalk in favor of more pedestrian friendly five foot wide sidewalk). It is

recommended that this money be borrowed and reimbursed over a five to ten year period with Capital Improvement Plan (CIP) funds. This estimate excludes costs associated with the milling, resurfacing, and striping of Philo Road which funds are programmed in the CIP for 2008 construction.

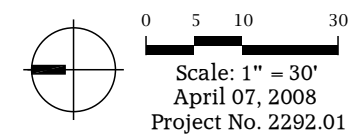
**Recommendation**

It is recommended that a motion accepting the Philo Road Beautification Design Development Plan as presented [and amended] be approved.

# Philo Road Beautification - Urbana, Illinois



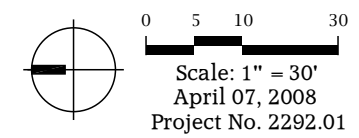
CONCEPT PLAN 1



# Philo Road Beautification - Urbana, Illinois



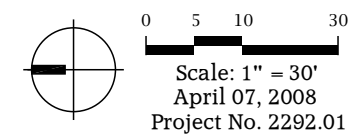
CONCEPT PLAN 2



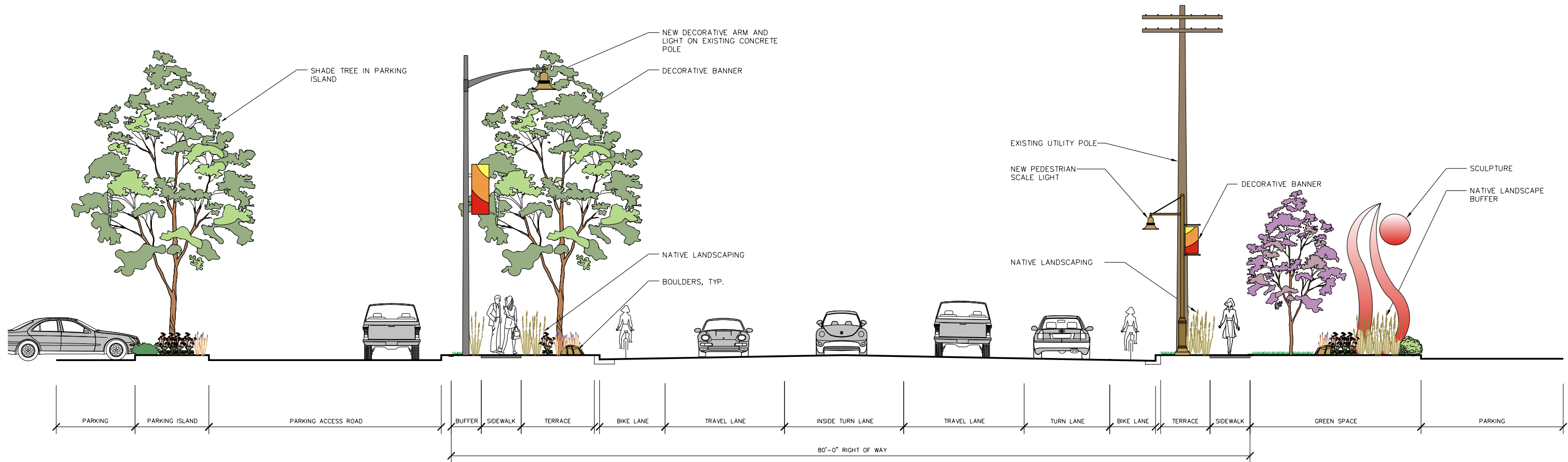
# Philo Road Beautification - Urbana, Illinois



CONCEPT PLAN 3



# Philo Road Beautification - Urbana, Illinois



**TYPICAL SECTION FLORIDA TO COLORADO**

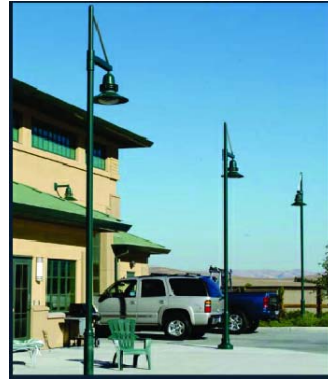
0 5 10 10  
 Scale: 1" = 30'  
 April 07, 2008  
 Project No. 2292.01



# Philo Road Beautification - Urbana, Illinois



Bench



Light Fixture



Bioswale / Raingarden



Trash Receptacle



Bike Rack



Landscape Character



Landscape Character

## Preferred Amenities and Landscape Character

April 7, 2008  
Project No. 2292



## **Illinois Indigenous Trees**

### **Large Sized Trees (35-50 feet)**

Acer nigrum, Black Maple  
Acer saccharum, Sugar Maple  
Betula nigra, River Birch  
Carya cordiformis, Bitternut Hickory  
Carya ovata, Shagbark Hickory  
Celtis occidentalis, Hackberry  
Cladrastis kentuckea, (Clutea) Yellowwood  
Diospyros virginiana, Persimmon  
Gleditsia triacanthos, Honey Locust  
Gymnocladus dioicus, Kentucky Coffeetree  
Juglans nigra, Black Walnut  
Liquidambar styraciflua, Sweet Gum  
Liriodendron tulipifera, Tulip-Tree  
Magnolia acuminata, Cucumber Magnolia  
Nyssa sylvatica, Tupelo, Black Gum  
Platanus occidentalis, Sycamore, American Planetree  
Quercus alba, White Oak  
Quercus bicolor, Swamp White Oak  
Quercus macrocarpa, Bur Oak  
Quercus muhlenbergii, Chinkapin Oak  
Quercus rubra, Northern Red Oak  
Taxodium distichum, Bald Cypress  
Tilia Americana, American Linden, Basswood  
Thuja occidentalis, Eastern Arborvitae

### **Intermediate-Sized Trees (25-40 feet)**

Aesculus glabra, Ohio Buckeye  
Carpinus caroliniana, American Hornbeam  
Ostrya virginiana Ironwood, Hophornbeam  
Sassafras albidum, Sassafras

### **Small Ornamental Trees (15-25 feet)**

Aesculus pavia, Red Buckeye  
Amelanchier laevis, Allegheny Serviceberry  
Asimina triloba, Pawpaw  
Cercis Canadensis, Eastern Redbud  
Cornus alternifolia, Pagoda Dogwood  
Crataegus crusgalli, Cockspur Hawthorn  
Crataegus viridis, Green Hawthorn  
Ptelea trifoliata, Wafer Ash



## Illinois Indigenous Shrubs

Aesculus pavia, Red buckeye  
Alnus serrulata smooth, common, or hazel alder  
Amelanchier humilis low shadbush  
Amelanchier laevis shadbush  
Amorpha canescens lead plant  
Amorpha fruticosa false indigo, indigobush  
Aronia melanocarpa black chokeberry  
Ceanothus americanus New Jersey tea  
Cephalanthus occidentalis common buttonbush  
Cornus drummondii rough-leaved dogwood  
Cornus obliqua silky or pale dogwood  
Cornus racemosa gray dogwood  
Cornus stolonifera (C. sericea) red-osier dogwood  
Corylus americana American hazel, hazelnut, or filbert  
Diervilla lonicera dwarf bush honeysuckle  
Hydrangea arborescens wild or smooth hydrangea  
Hypericum prolificum shrubby St. John's-wort  
Ilex verticillata common winterberry, black alder  
Lindera benzoin spicebush  
Physocarpus opulifolius common or eastern ninebark  
Potentilla fruticosa shrubby or bush cinquefoil  
Prunus americana wild or American plum  
Prunus virginiana  
Ptelea trifoliata  
Rhus aromatica fragrant sumac  
Rhus copallina shining or winged sumac  
Rhus glabra smooth sumac  
Rhus typhina staghorn sumac  
Salix humilis prairie willow  
Sambucus canadensis common or American elder or elderberry  
Spiraea alba narrow-leaved meadowsweet  
Spiraea tomentosa hardhack, steeplebush  
Staphylea trifolia American bladdernut  
Symphoricarpos occidentalis wolfberry, western snowberry  
Symphoricarpos orbiculatus coralberry; buckbrush, Indian current  
Taxus canadensis Canada yew  
Viburnum acerifolium maple-leaved  
Viburnum lentago  
Viburnum rafinesquianum downy arrowwood

## **Illinois Indigenous Perennials**

Alumroot *Heuchera*  
Black- Eyed Susan *Rudbeckia hirta*  
Blue Wild Indigo *Baptisia australis*  
Butterfly Weed *Asclepias tuberosa*  
Cardinal Flower *Lobelia cardinalis*  
Cinquefoil *Portentilla*  
Compass Plant *Silphium laciniatum*  
Culver's Root *Veronicastrum virginicum*  
Evening Primrose *Oenothera biennis*  
False Sunflower *Heliopsis helianthoides*  
Germander *Teucrium*  
Golden Alexander *Zizia aurea*  
Goldenrod *Solidago*  
Lead Plant *Amorpha canescens*  
Missouri Primrose *Oenothera macrocarpa*  
Mistflower *Eupatorium coelestinum*  
New England Aster *Aster novae-angliae*  
Obedient Plant *Physostegia virginiana*  
Phlox *Phlox*  
Prairie Blazing Star *Liatris pycnostachya*  
Purple Coneflower *Echinacea purpurea*  
Queen-of-the-Prairie *Filipendula rubra*  
Rattlesnake Master *Eryngium yuccifolium*  
Sage *Salvia*  
Self-Heal *Prunella vulgaris elongata*  
Sneezeweed *Helenium autumnale*  
Spiderwort *Tradescantia*  
St. John's Wort *Hypericum*  
Tickseed *Coreopsis*  
Verbena *Verbena*  
Veronica *Veronica*  
Violet *Viola*  
Wand Flower *Guara*  
Wild Bergamot *Monarda*  
Wild Strawberry *Fragaria virginiana*

## **Illinois Indigenous Grasses**

Prairie Drop Seed

Little Blue Stem

Big Blue Stem

Karl Forester

Pennisetum varieties

Blue Fescue

Miscanthus - Flame Grass

Miscanthus - Zebra Grass

**COST ESTIMATE**



Project: **Philo Road Reconstruction**

Date: April 07, 2008

Project Number: 2292.01

Estimated by:gp

Cost Estimate Status: **Design Developmen**  
Florida to Colo

Approved by:gp

Item	Qty.	Unit	Unit cost	Item Total	Remarks
1 Pedestrian lighting	11	ea	\$4,500.00	\$49,500.00	15' light on ornamental pole includes all electricakl hook up
2 Ornamental arm and fixture on exisitng pole	10	ea	\$1,000.00	\$10,000.00	Decorative 4' arm and lightfixture retrofitted onto exisitng concrete pole include all electrical hook up
3 Sidewalk demolition	200	sf	\$2.00	\$400.00	50 ' of removal either sid
2 Sidewalk replacement	200	sf	\$4.00	\$800.00	50 ' of replacement either sid
4 Benches	9	ea	\$1,800.00	\$16,200.00	6' Aluminum bench on concrete pad
5 Trash receptacles	8	ea	\$800.00	\$6,400.00	32 gal. trash with swing door and dome lid
7 Sodded lawn (in ROW)	621	sy	\$4.00	\$2,484.00	sod with 4" topsoil and straw mulch
8 Shrub, Orn Grass and Floral Beds (in ROW)	8,199	sf	\$10.00	\$81,990.00	20% Shrub, 60% Orn Grasses, 20% Floral
8 Shade trees (in ROW)	2	ea	\$800.00	\$1,600.00	3" to 4" cal.
9 Ornamental trees (in ROW)	12	ea	\$500.00	\$6,000.00	2" to 2-1/2" cal.
12 Ornamental boulders	100	ea	\$75.00	\$7,500.00	36" to72"
13 Concrete pad for sculptu	4	ea	\$800.00	\$3,200.00	10' x 10' x 12" depth
14 Sculpture	4	ea	\$10,000.00	\$40,000.00	Mixed media weatherproof
15 Drip Irrigation	1	ls	\$20,000.00	\$20,000.00	Mixed media weatherproof
Total Streetscape Cost				\$246,074.00	
20% Contingency				\$49,214.80	
<b>Total Streetscape cost Colorado to Florida</b>				<b>\$295,288.80</b>	

	<b>Estimate Notes</b>						
	1. Cost does not include road demolition, street reconstruction, crosswalk improvements and stripping						
	2. Bus Shelters provide and installed by MTD						
	<b>Landscape Out Side of R.O.W.</b>						
16	Sodded Lawn (out ROW)	200	sy	\$4.00	\$800.00	sod with 4" topsoil	
17	Shrub, Orn Grass and Floral Beds (out ROW)	2,677	sf	\$10.00	\$26,770.00	20% Shrub, 60% Orn Grasses, 20% Floral	
18	Shade Trees (out ROW)	7	ea	\$800.00	\$5,600.00	3" to 4" cal.	
19	Ornamental Trees (out ROW)	22	ea	\$500.00	\$11,000.00	2" to 2-1/2" cal.	
20	Bike Racks	18	ea	\$600.00	\$10,800.00	Aluminum loop powder coat	
	<b>Future Costs</b>						
21	Banners on Pedestrian Poles	2	ea	\$500.00	\$1,000.00	18" x 48" canvas banner with decorative arms	
22	Banners on Existing Poles	3	ea	\$800.00	\$2,400.00	24" x 72" canvas banner with decorative arms	
					\$58,370.00		
	Total Streetscape Cost				\$11,674.00		
	20% Contingency						
	<b>Streetscape cost Colorado to Florida</b>					<b>\$70,044.00</b>	