

- RIGHT-OF-WAY
- - - PRIVATE ROAD
- ILLINOIS STREETS
- ==== RAILROAD TRACK
- CITY LIMITS

CITY OF URBANA ENGINEERING DIVISION 2004 CONSTRUCTION

- ### LEGEND
- MAJOR BRICK SIDEWALK REPAIRS/REPLACEMENT
 - SLURRY SEAL/MICRO PAVING
 - RESURFACING/RECONSTRUCTION/CONSTRUCTION
 - SANITARY SEWER REPAIRS
 - SANITARY SEWER LINING
 - STORM SEWER INSTALLATION/REPAIRS
 - STORM SEWER LINING
 - BIKE PATH CONSTRUCTION
 - PAVEMENT PATCHING
 - TRAFFIC SIGNAL INSTALLATION/MODERNIZATION/UPGRADING
 - STREETSCAPE/MINI PARKS/ENTRY WAYS



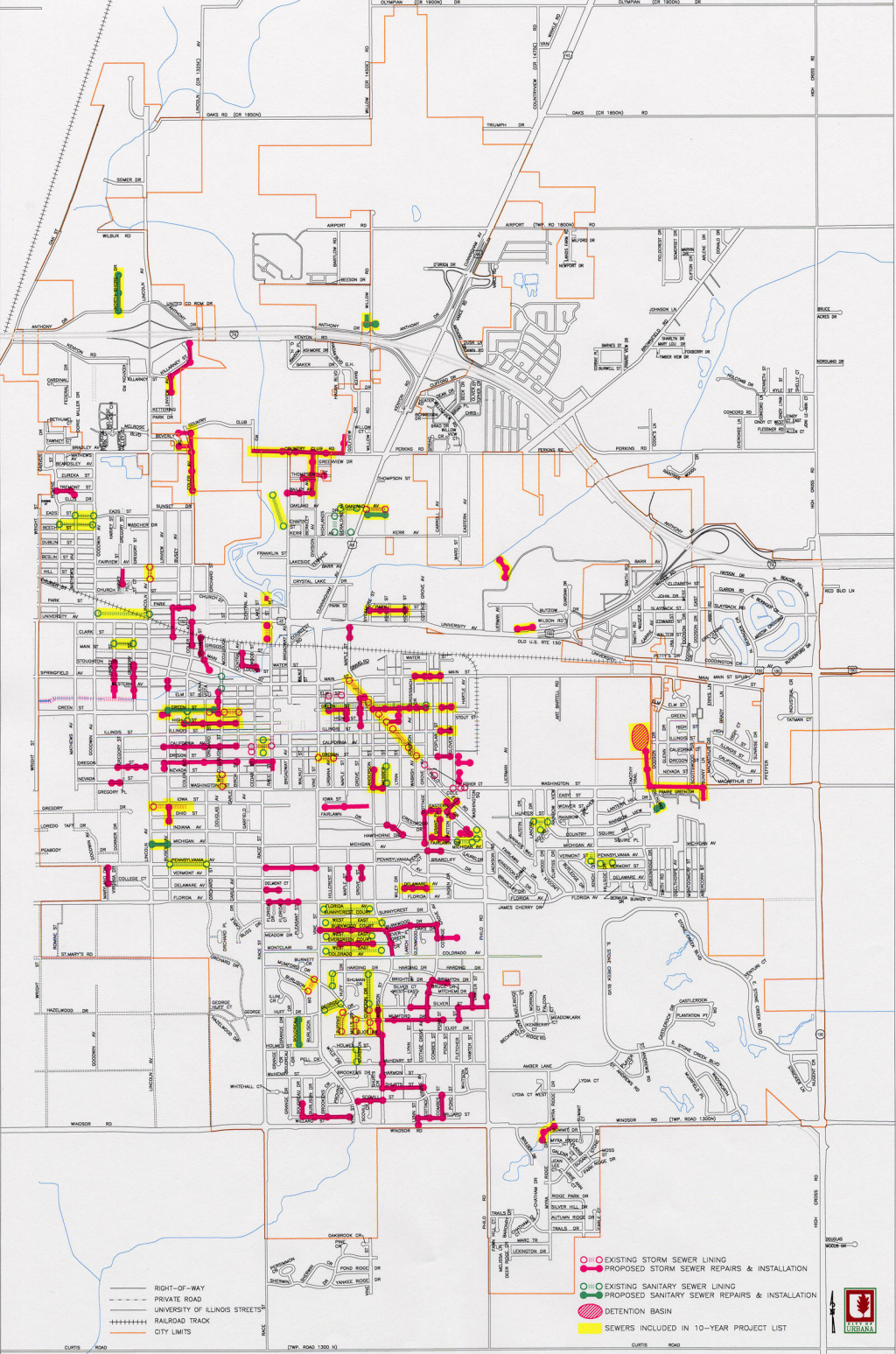


FIGURE A
PROPOSED SEWER PROJECTS



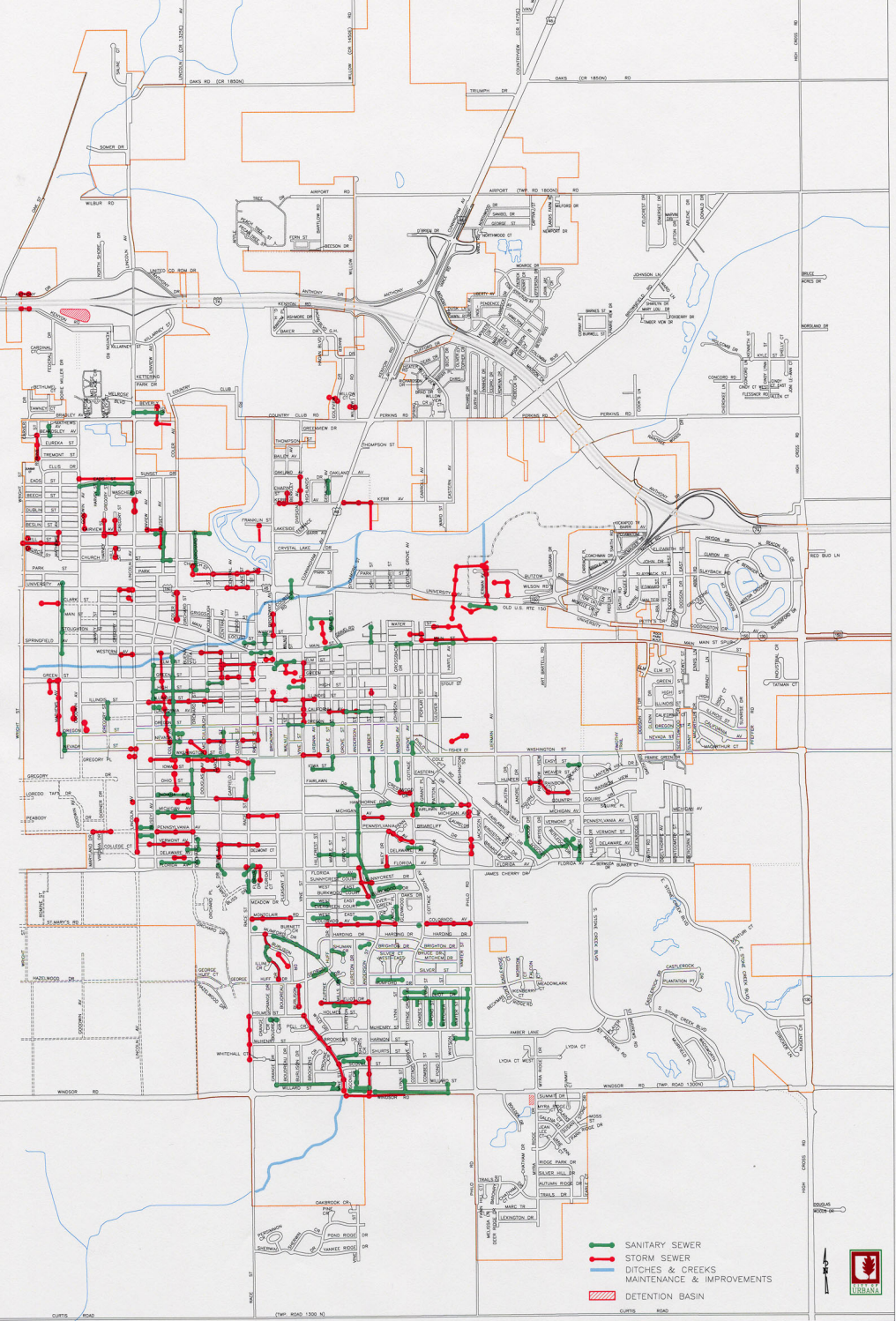


FIGURE B
SEWER PROJECTS COMPLETED SINCE 1981



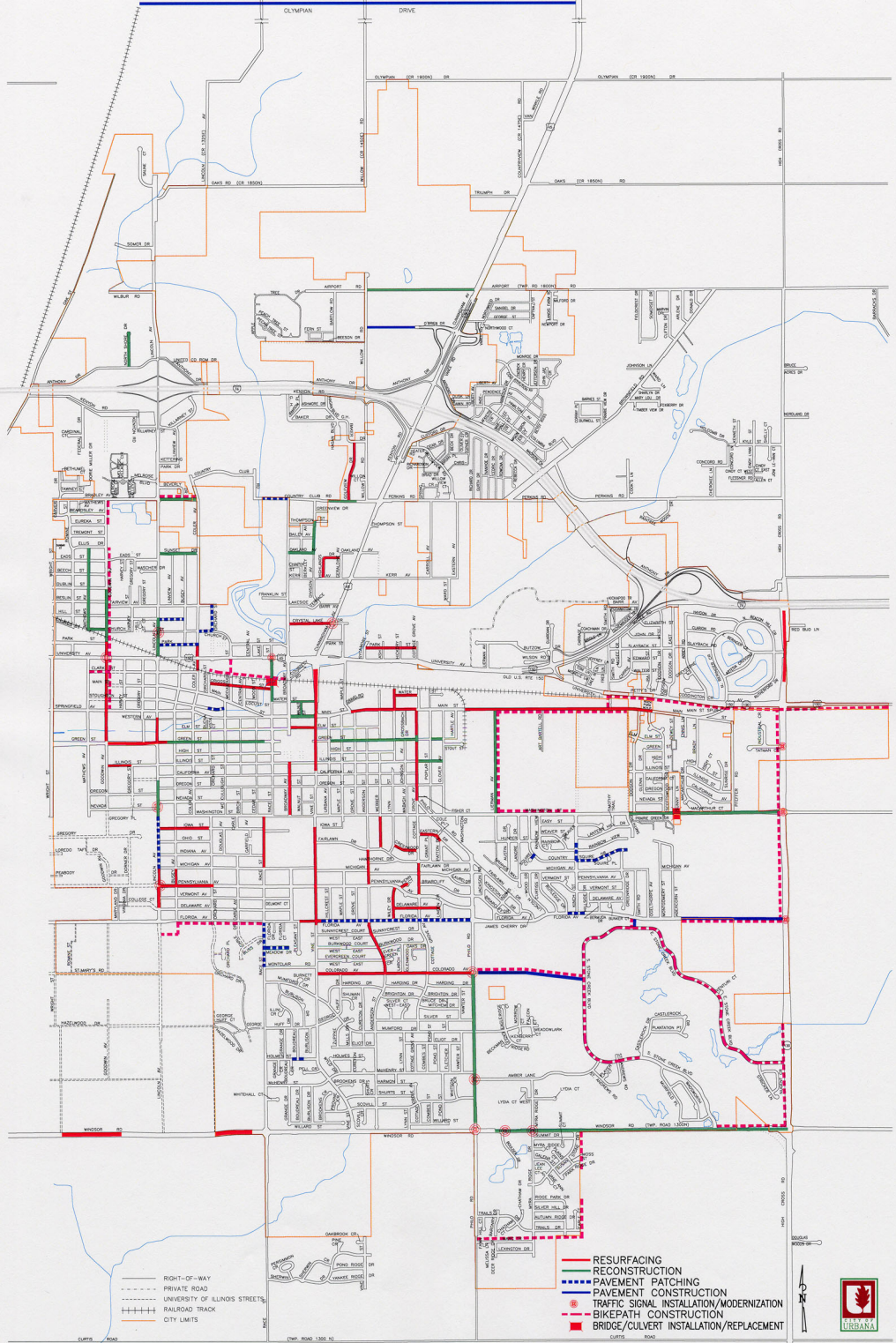


FIGURE C
PROJECTED TEN YEAR MAJOR STREET RESURFACING, RECONSTRUCTION,
CONSTRUCTION, TRAFFIC SIGNALS, BIKEPATHS, & BRIDGES

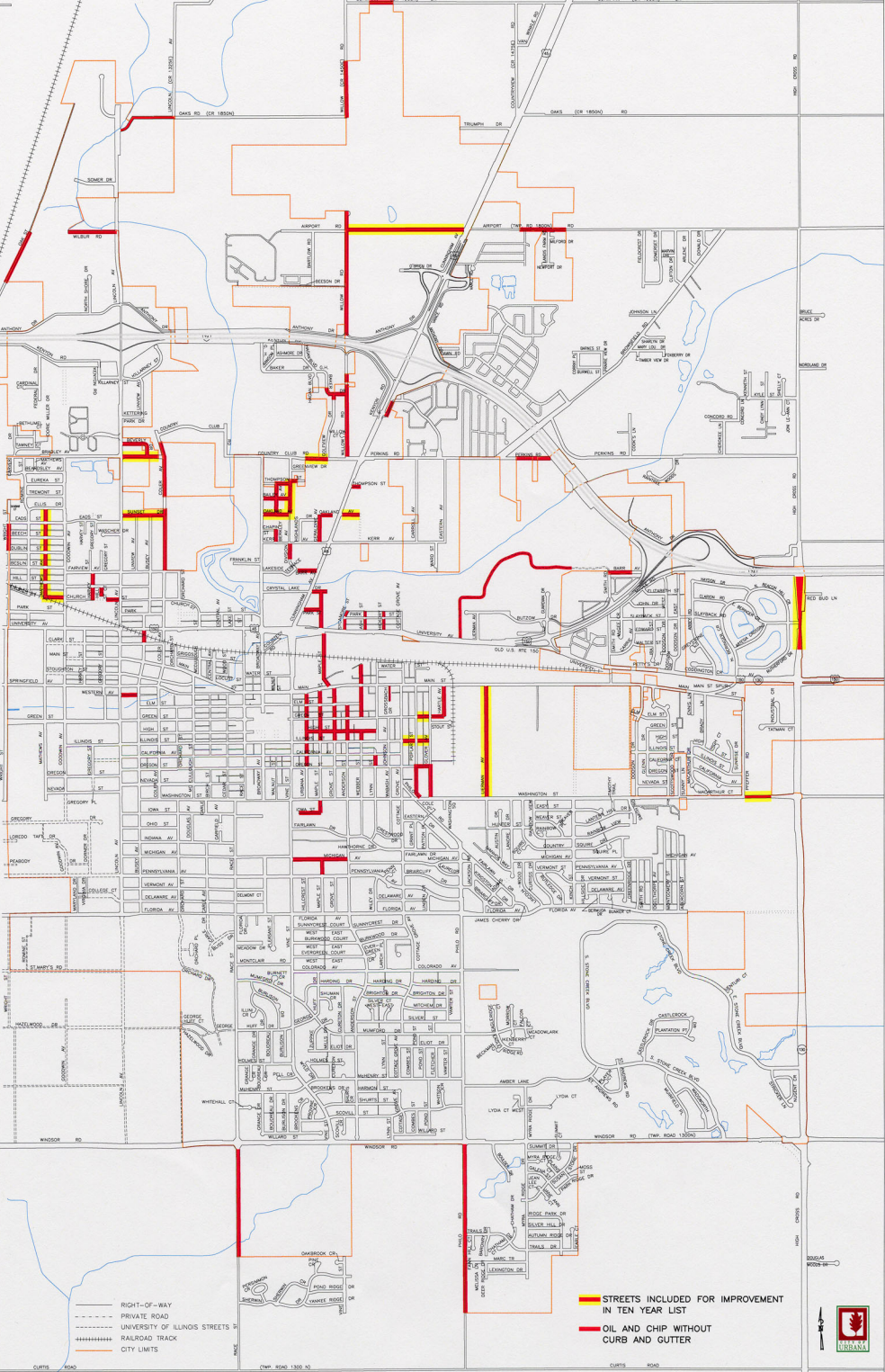
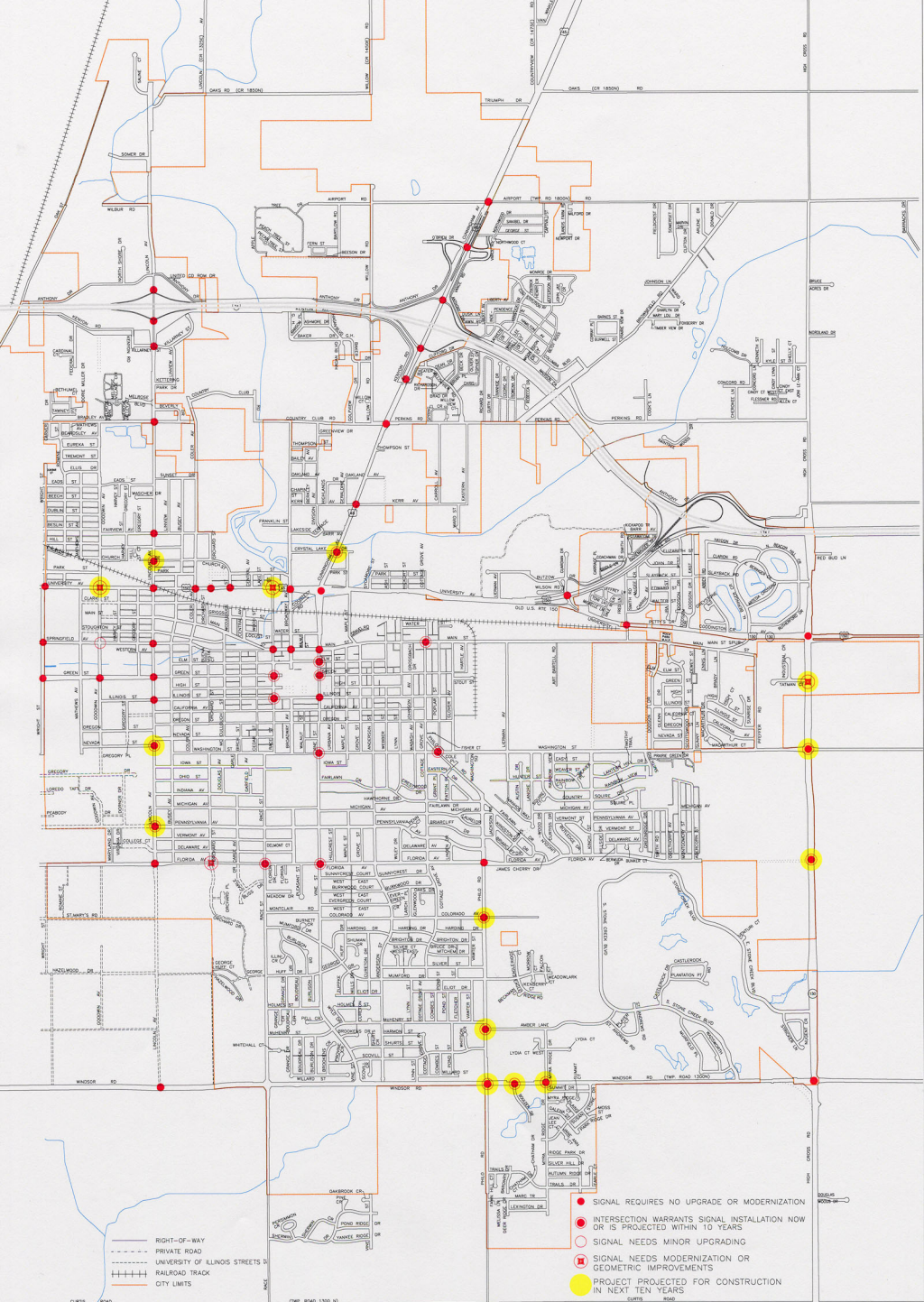


FIGURE D
OIL AND CHIP STREETS WITHOUT CURB AND GUTTER



——— RIGHT-OF-WAY
 - - - - - PRIVATE ROAD
 - - - - - UNIVERSITY OF ILLINOIS STREETS
 - - - - - RAILROAD TRACK
 + + + + + CITY LIMITS

- SIGNAL REQUIRES NO UPGRADE OR MODERNIZATION
- INTERSECTION WARRANTS SIGNAL INSTALLATION NOW OR IS PROJECTED WITHIN 10 YEARS
- SIGNAL NEEDS MINOR UPGRADING
- SIGNAL NEEDS MODERNIZATION OR GEOMETRIC IMPROVEMENTS
- PROJECT PROJECTED FOR CONSTRUCTION IN NEXT TEN YEARS

FIGURE E
 TRAFFIC SIGNALS

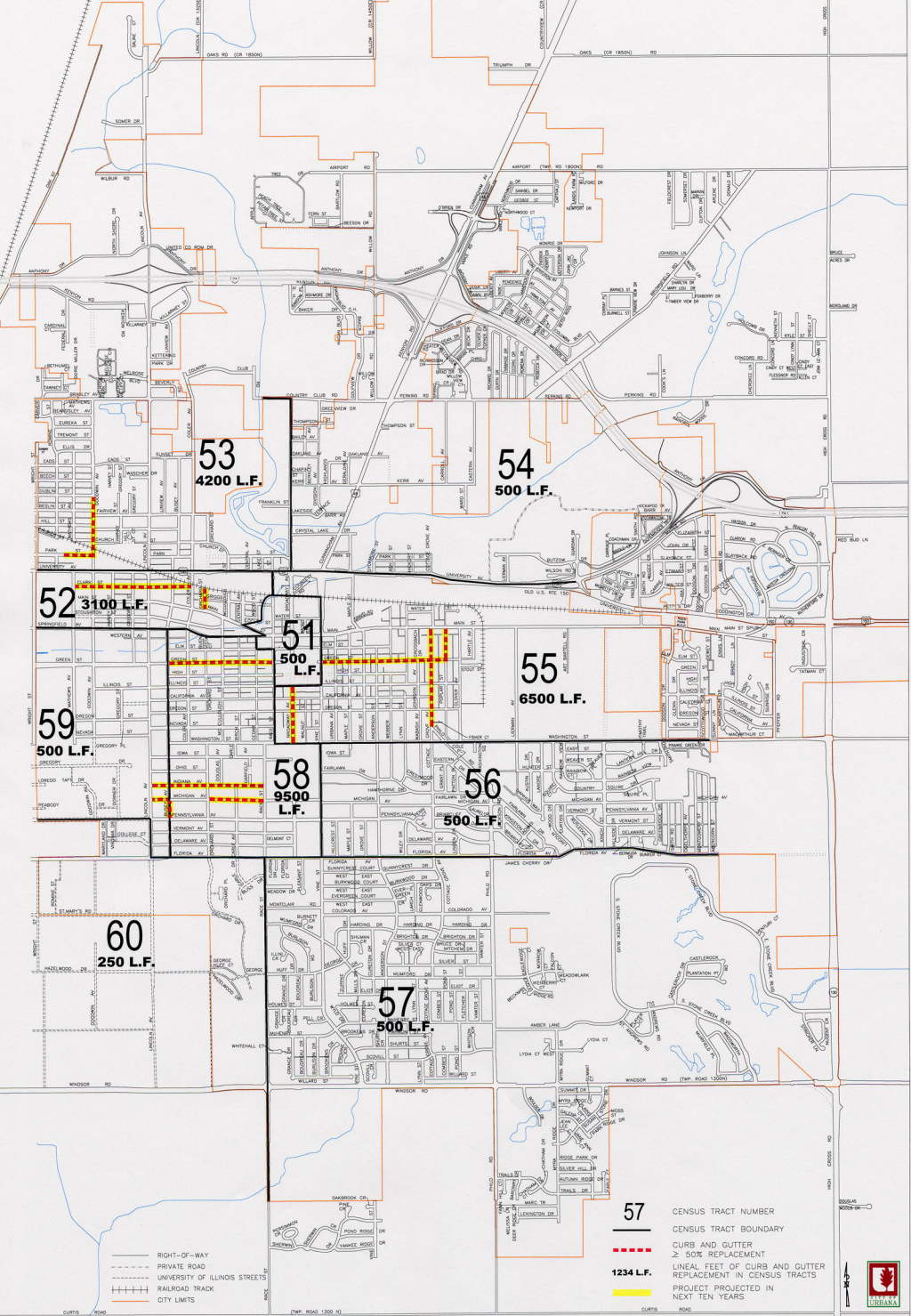
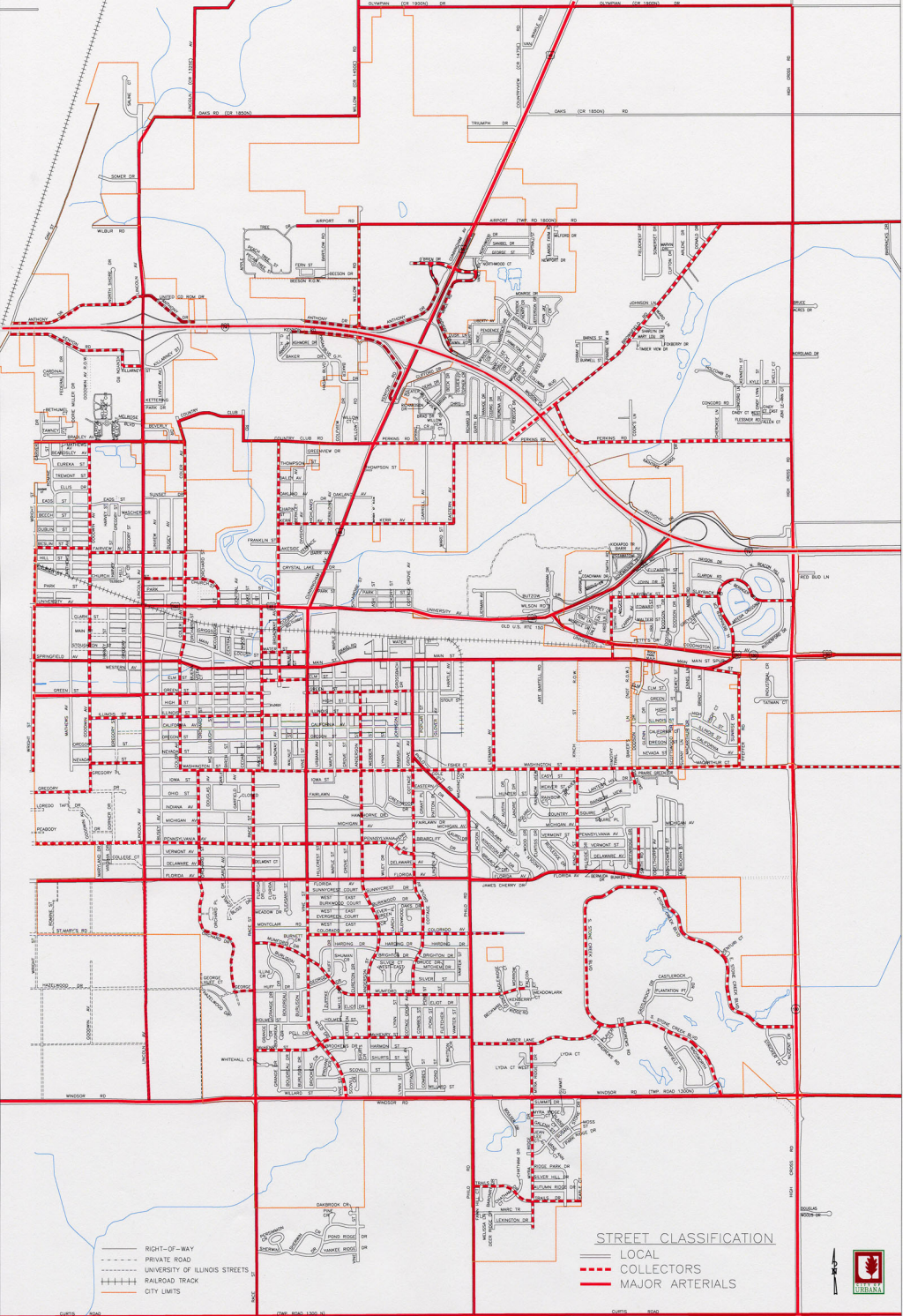


FIGURE F
 MAJOR CURB AND GUTTER MAINTENANCE





- RIGHT-OF-WAY
- - - PRIVATE ROAD
- UNIVERSITY OF ILLINOIS STREETS
- RAILROAD TRACK
- CITY LIMITS

- STREET CLASSIFICATION**
- LOCAL
 - - - COLLECTORS
 - MAJOR ARTERIALS



FIGURE G
ARTERIAL AND COLLECTOR STREETS

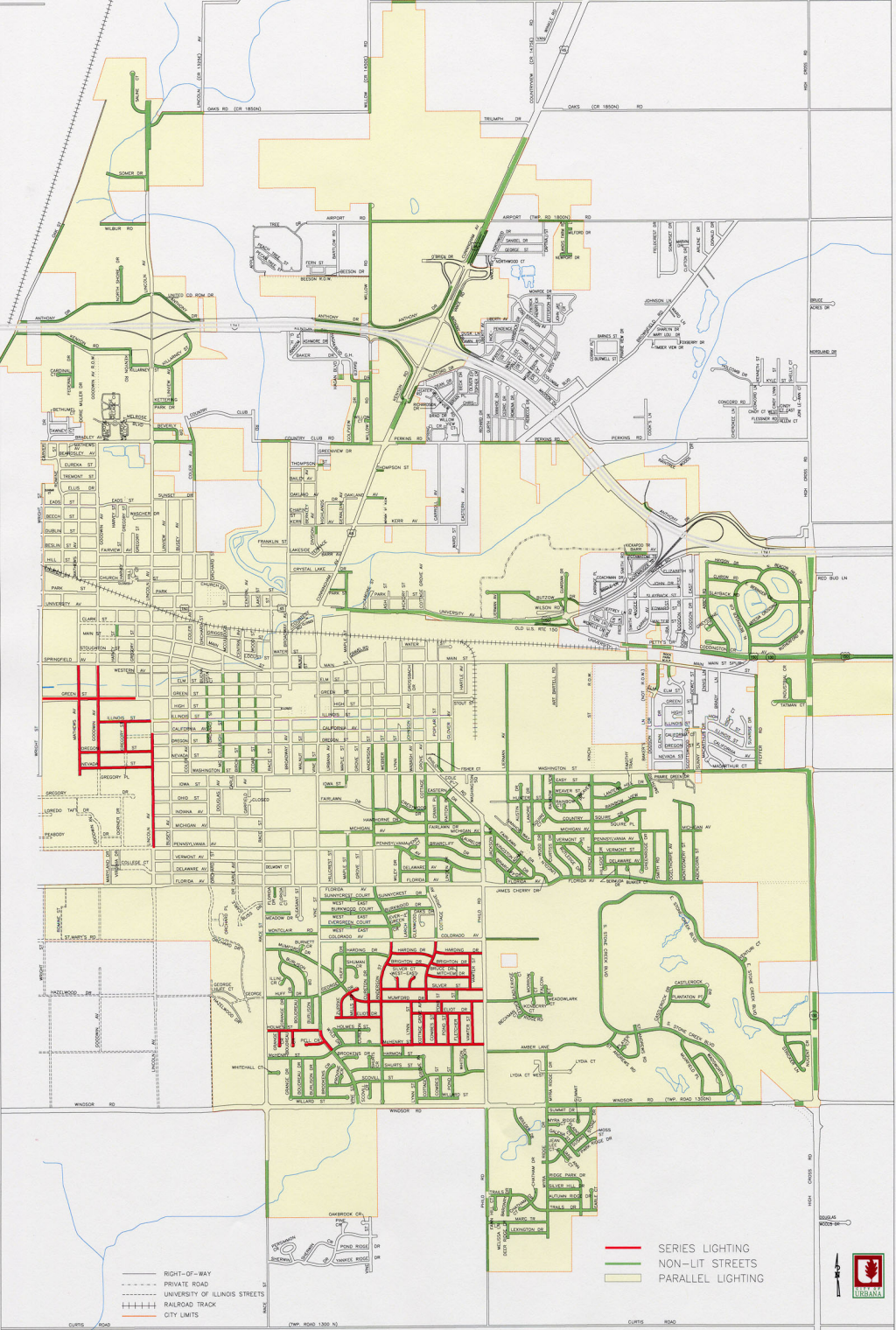
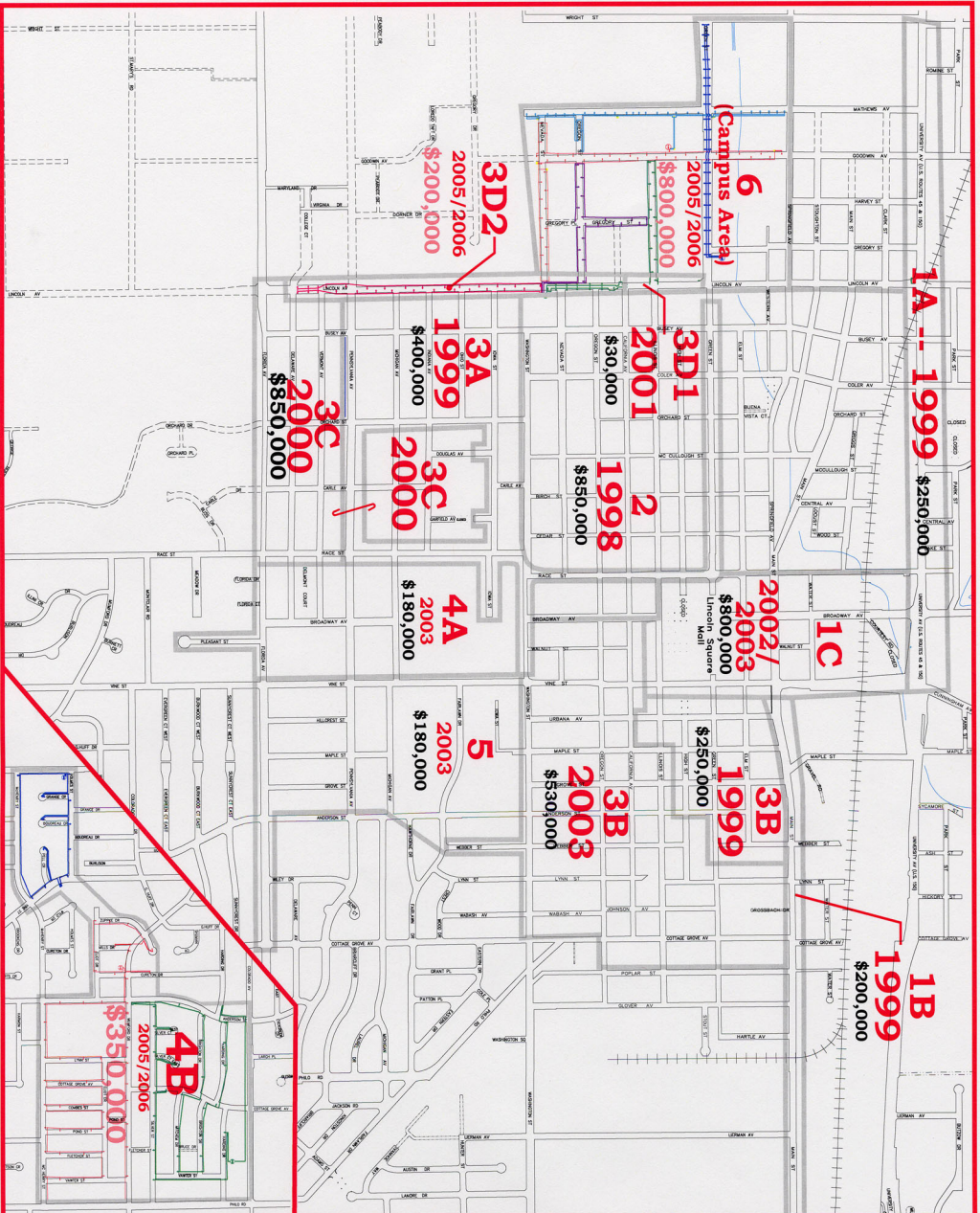


FIGURE H
STREET LIGHTING





**ENGINEERING
DIVISION
CAPITAL
IMPROVEMENT
PLAN**

LEGEND:

- RIGHT-OF-WAY
- - - PRIVATE ROAD OR INACCESSIBLE R.O.W.
- UNIVERSITY OF ILLINOIS STREETS
- RAILROAD TRACK
- EXISTING SERIES LIGHTING CIRCUIT
- AREA BOUNDARY
- 6A** AREA NUMBER
- \$100,000** COMPLETED PROJECT COST
- \$100,000** ESTIMATED PROJECT COST

NOTE: COSTS HAVE BEEN REVISED TO REFLECT BIDS & INCLUDE DESIGN COSTS

**SERIES LIGHTING
REPLACEMENT
PRIORITIES
LOCATION MAP**

FIGURE I
SERIES LIGHTING REPLACEMENT PRIORITIES LOCATION MAP

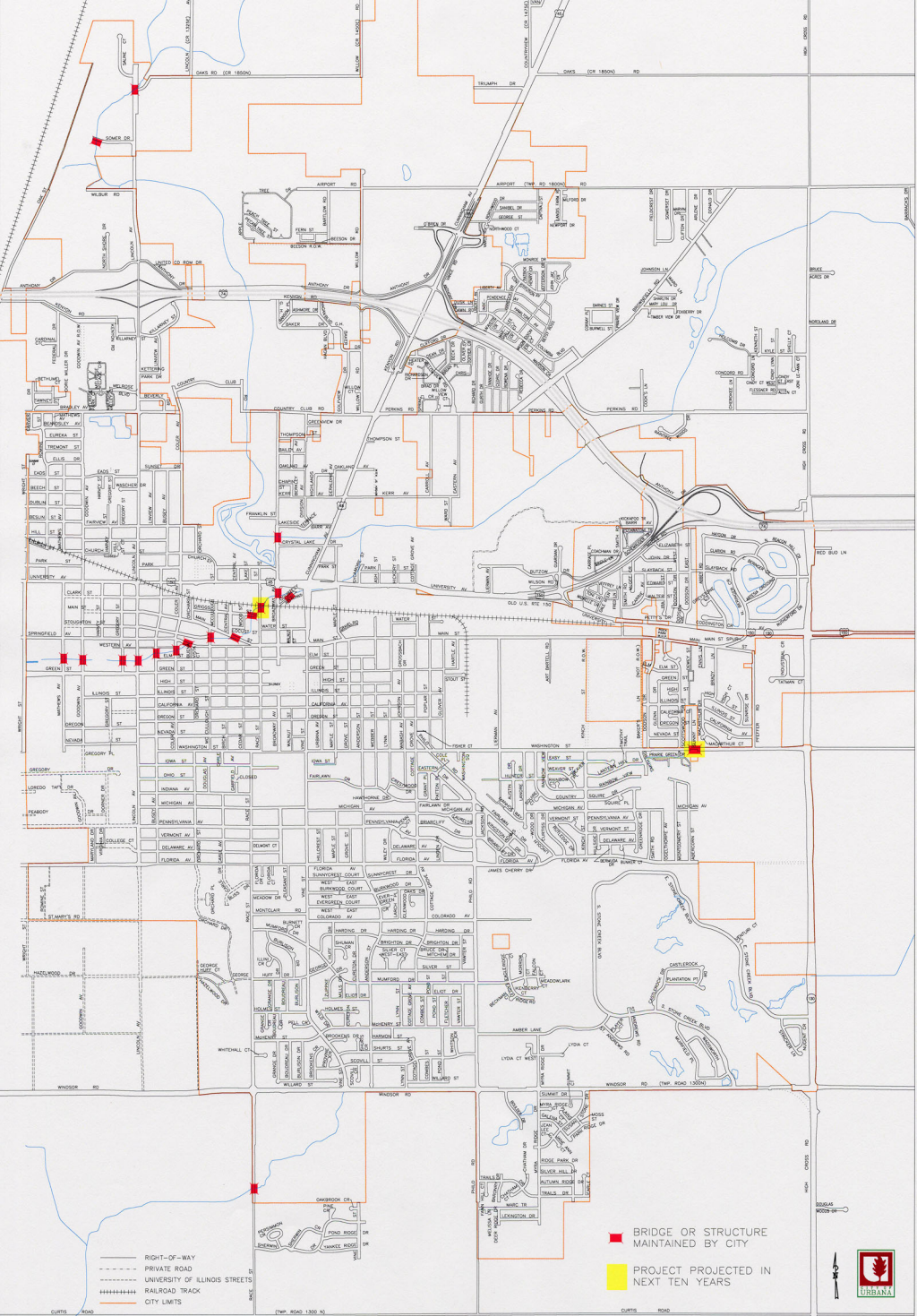


FIGURE L
BRIDGES AND STRUCTURES

BRICK SIDEWALK PROGRAM

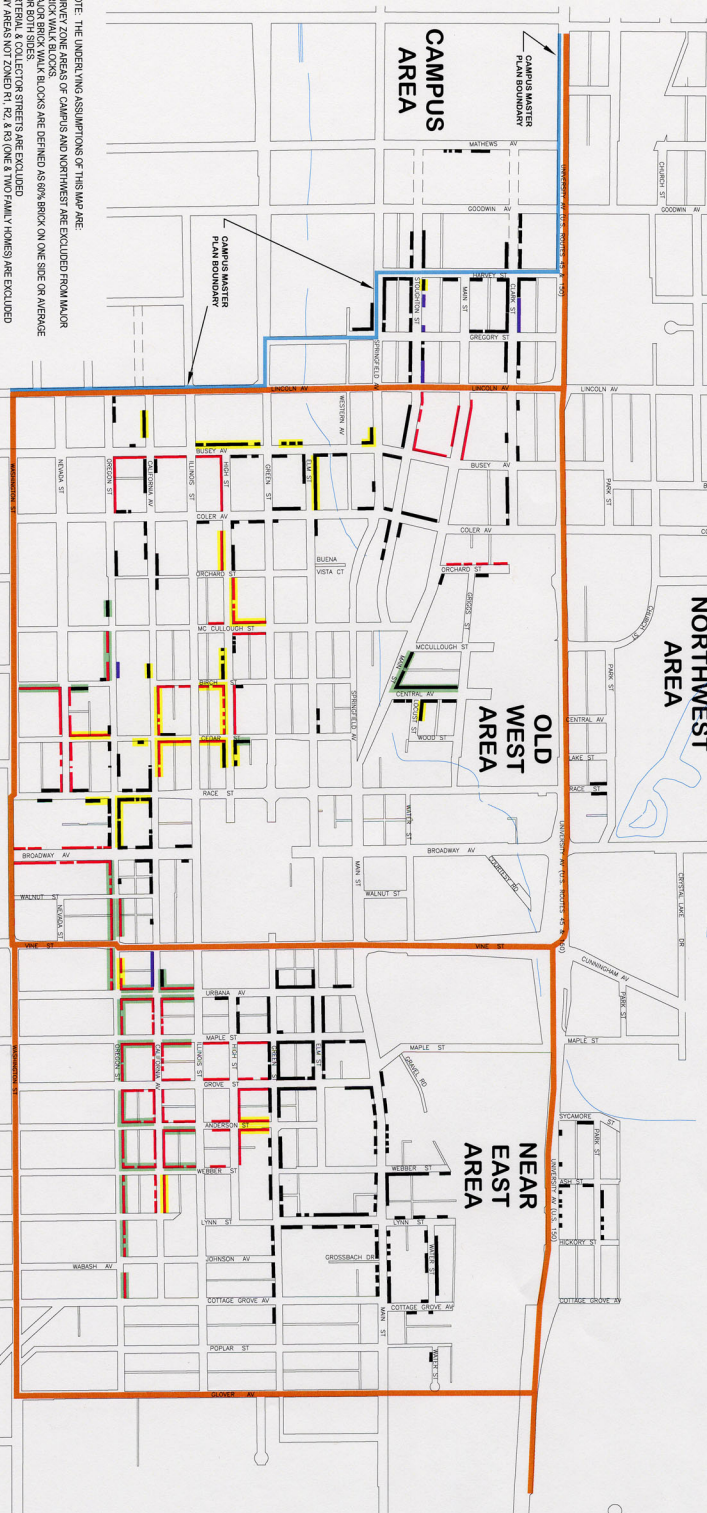
NORTHWEST AREA

OLD WEST AREA

NEAR EAST AREA

CAMPUS AREA

BRICK SIDEWALK FACTS	
TOTAL LENGTH:	Approximately 59,000 linear feet (not including sections at intersection corners)
WIDTH:	Varies from 4.5 feet to 4.75 feet.
LOCATION:	Various blocks from Wright Street to Glover Avenue, Erie Street (extended) to Washington Street.
CONDITION:	Original survey found approximately 50 % overgrown with grass and weeds or rated in poor condition (i.e. cracks missing, 2' or greater offsets, etc.). Majority of the balance is rated as fair condition (offsets up to 2", 1/2 dips or humps, spreading joints).
SERVICE AREAS:	Varies from single-family to high-density.
NOTE:	These figures do not include "StreetScope" walkways.



- NOTE: THE UNDERLYING ASSUMPTIONS OF THIS MAP ARE:
1. SERVICE ZONE AREAS OF CAMPUS AND NORTHWEST ARE EXCLUDED FROM MAJOR
 2. MAJOR BRICK WALK BLOCKS ARE DEFINED AS 60% BRICK ON ONE SIDE OR AVERAGE
 3. FOR BOTH SIDES
 4. ANY AREAS NOT ZONED R-1, R-2 & R3 ZONE & TWO FAMILY HOMES ARE EXCLUDED

- BRICK SIDEWALKS BY CITY ORIGINANCE BRICK SIDEWALKS MAY BE REPAIRED OR REPLACED WITH CONCRETE ONLY IF PROPERTY OWNERS DOES NOT WANT TO KEEP IT AS A BRICK SIDEWALK.
- MAJOR BRICK WALK BLOCKS BY CITY ORIGINANCE BRICK SIDEWALKS ARE TO BE REPAIRED OR RECONSTRUCTED WITH BRICK. BRICK PROPERTY OWNERS MAY REQUEST THE CITY COUNCIL TO MAKE THIS REPAIRMENT TO AVOID STRENGTHENING REQUIREMENTS. MINORS MAY BE REPAIRED BY A PRIVATE CONTRACTOR.

- RECONSTRUCTION ON REHAB COMPLETED IN BRICK
- REHAB PROJECTS ON WHICH PERMITS PROJECTED TO 2024 OR 2025
- BRICK SIDEWALK COMPLETED TO CONCRETE

SCALE 1" = 700'

FIGURE M. EXISTING BRICK SIDEWALKS

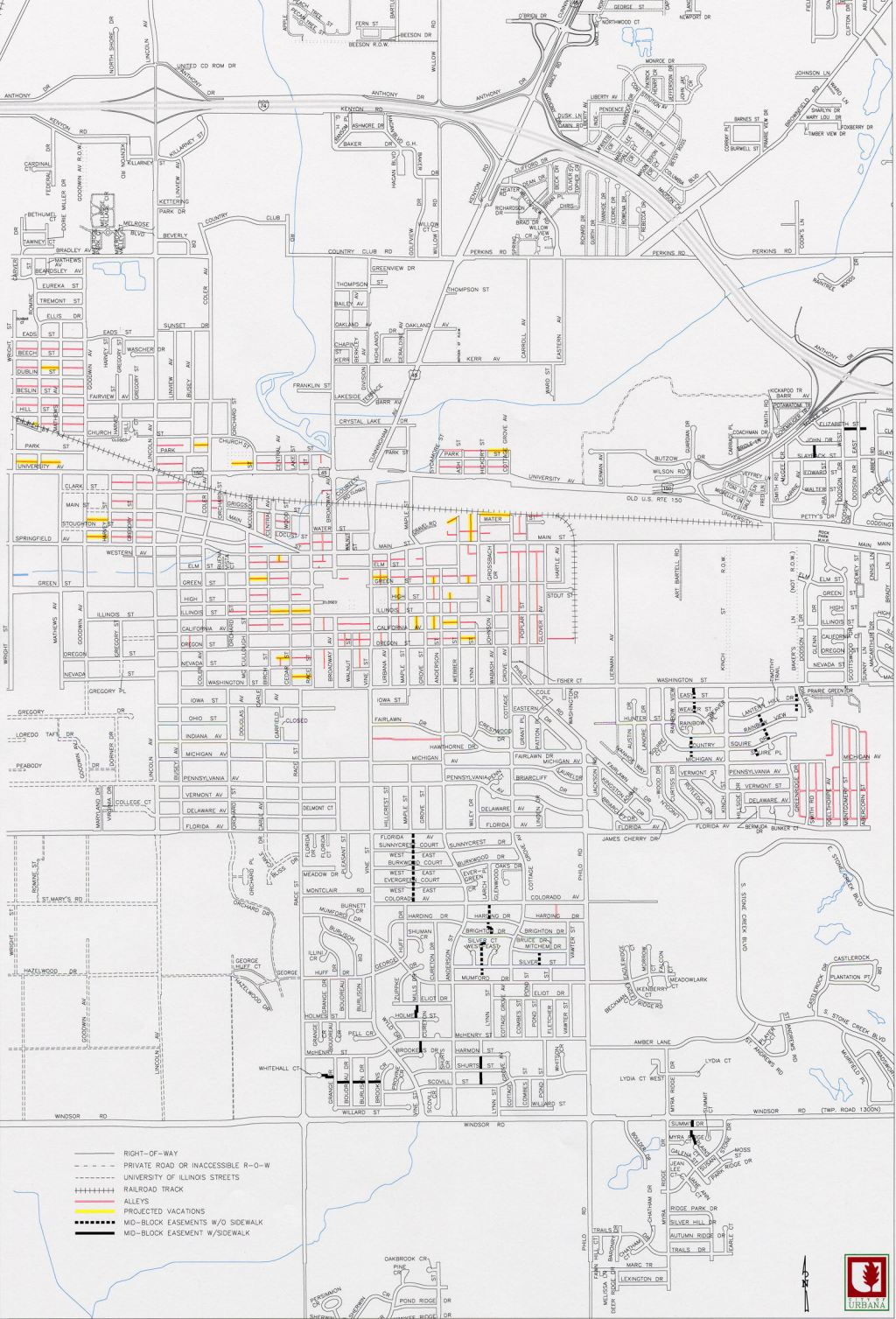
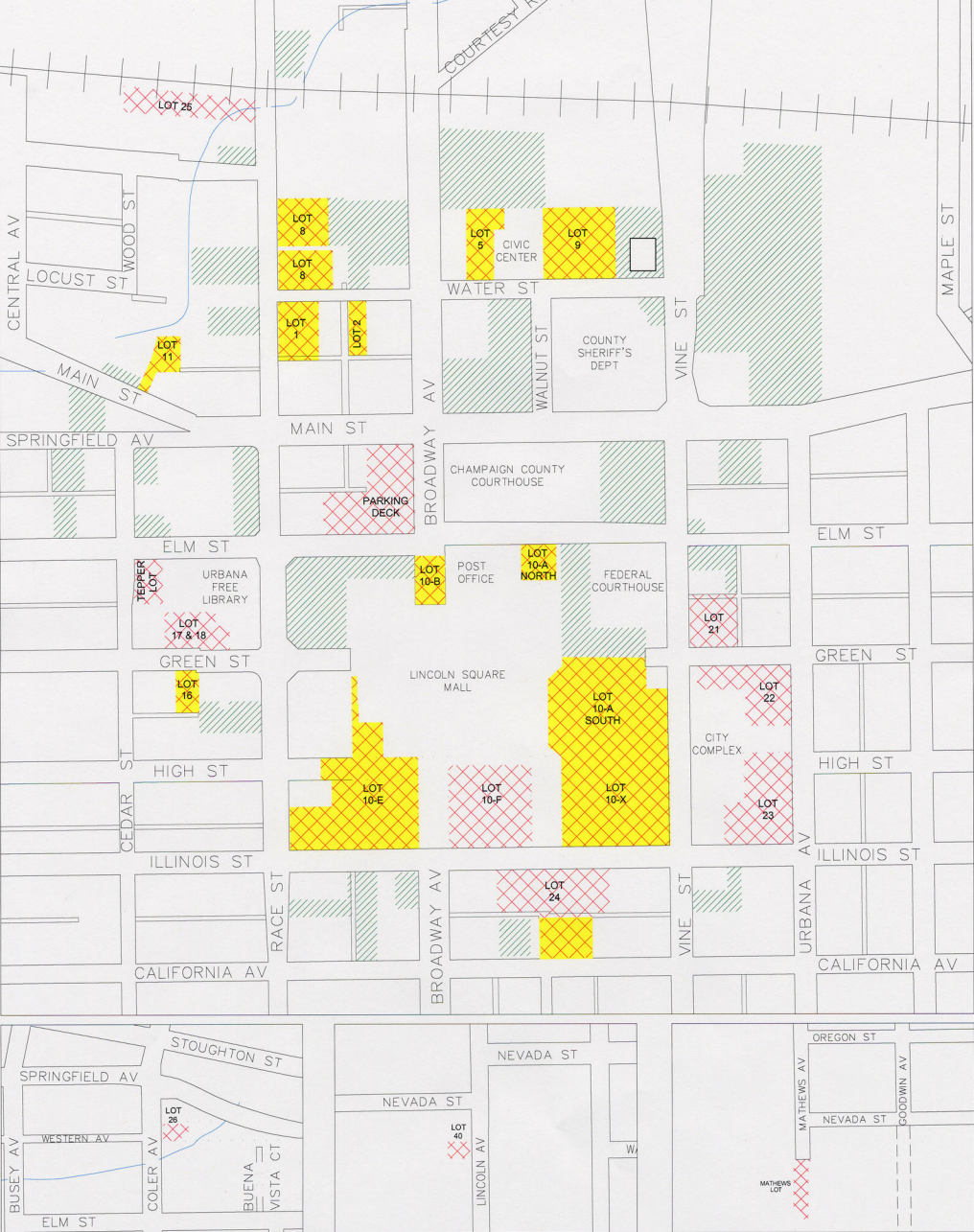

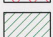
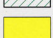


FIGURE N
ALLEYS & MID-BLOCK EASEMENTS





-  PUBLIC PARKING LOTS
-  PRIVATE PARKING LOTS
-  PROJECTED RECONSTRUCTION/RESURFACING IN NEXT 10 YEARS

CITY OF URBANA, ILLINOIS DOWNTOWN PARKING LOTS

FIGURE O
DOWNTOWN PARKING LOTS



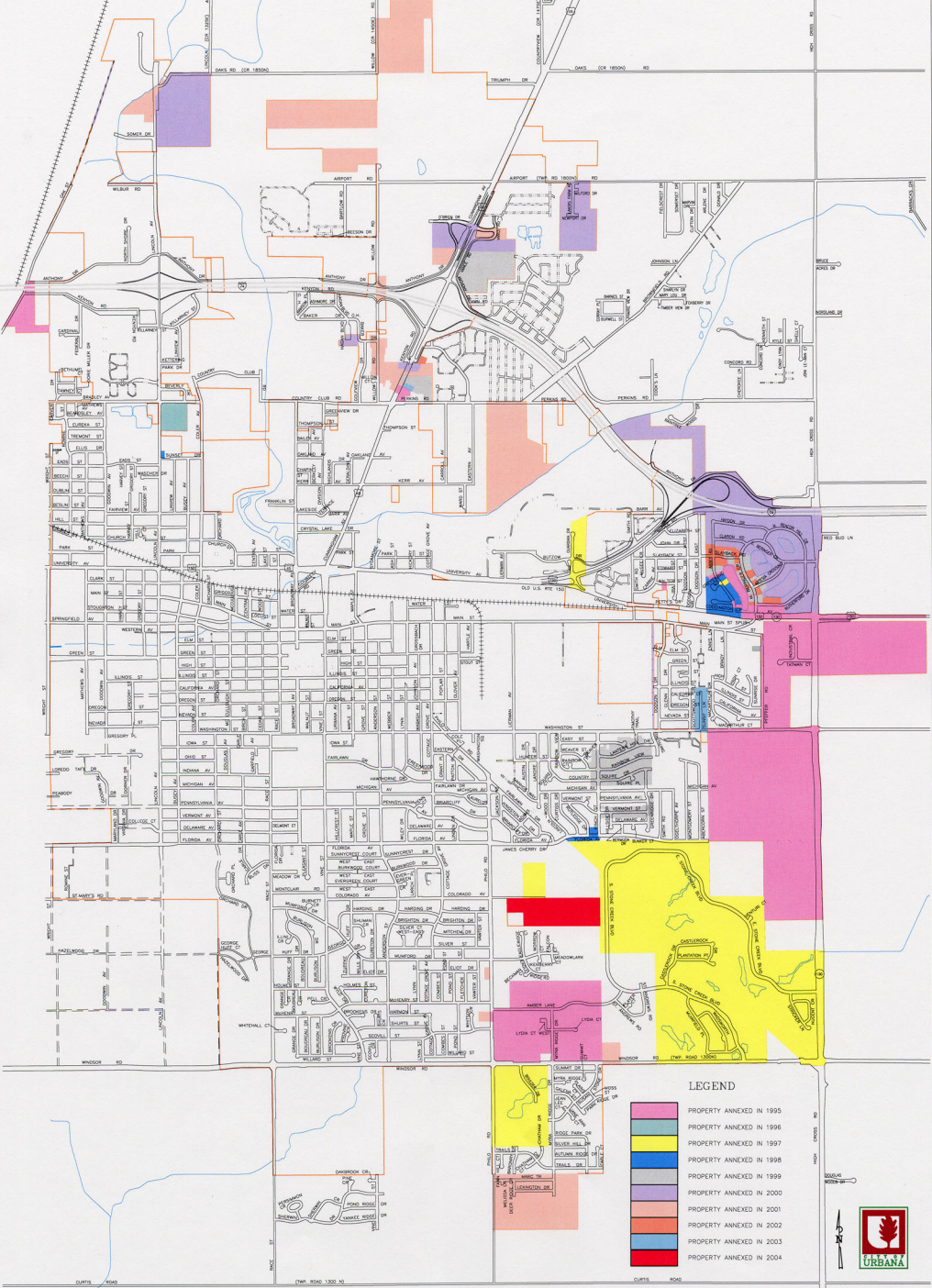


FIGURE P
ANNEXATION MAP

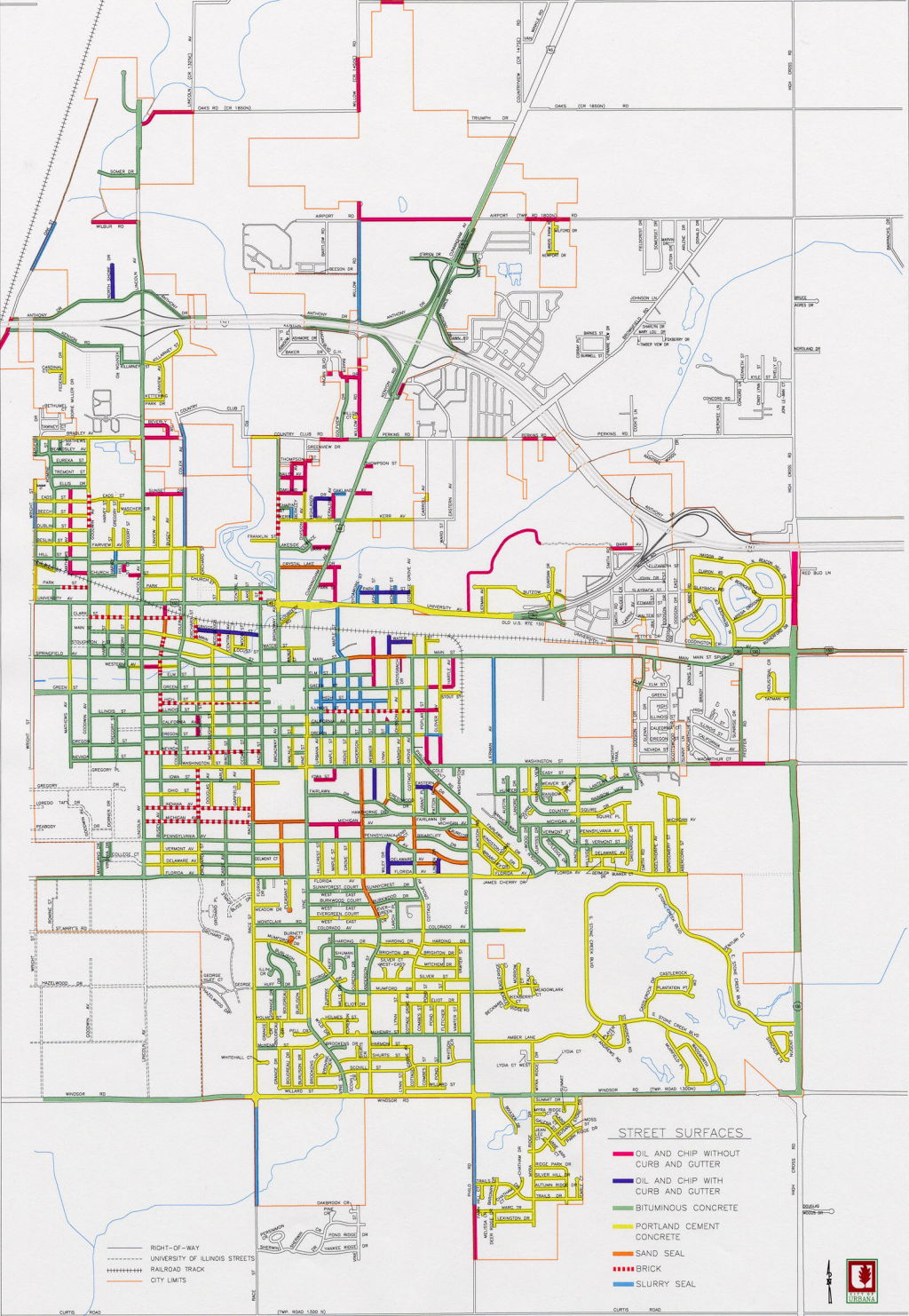


FIGURE Q
EXISTING STREET SURFACES



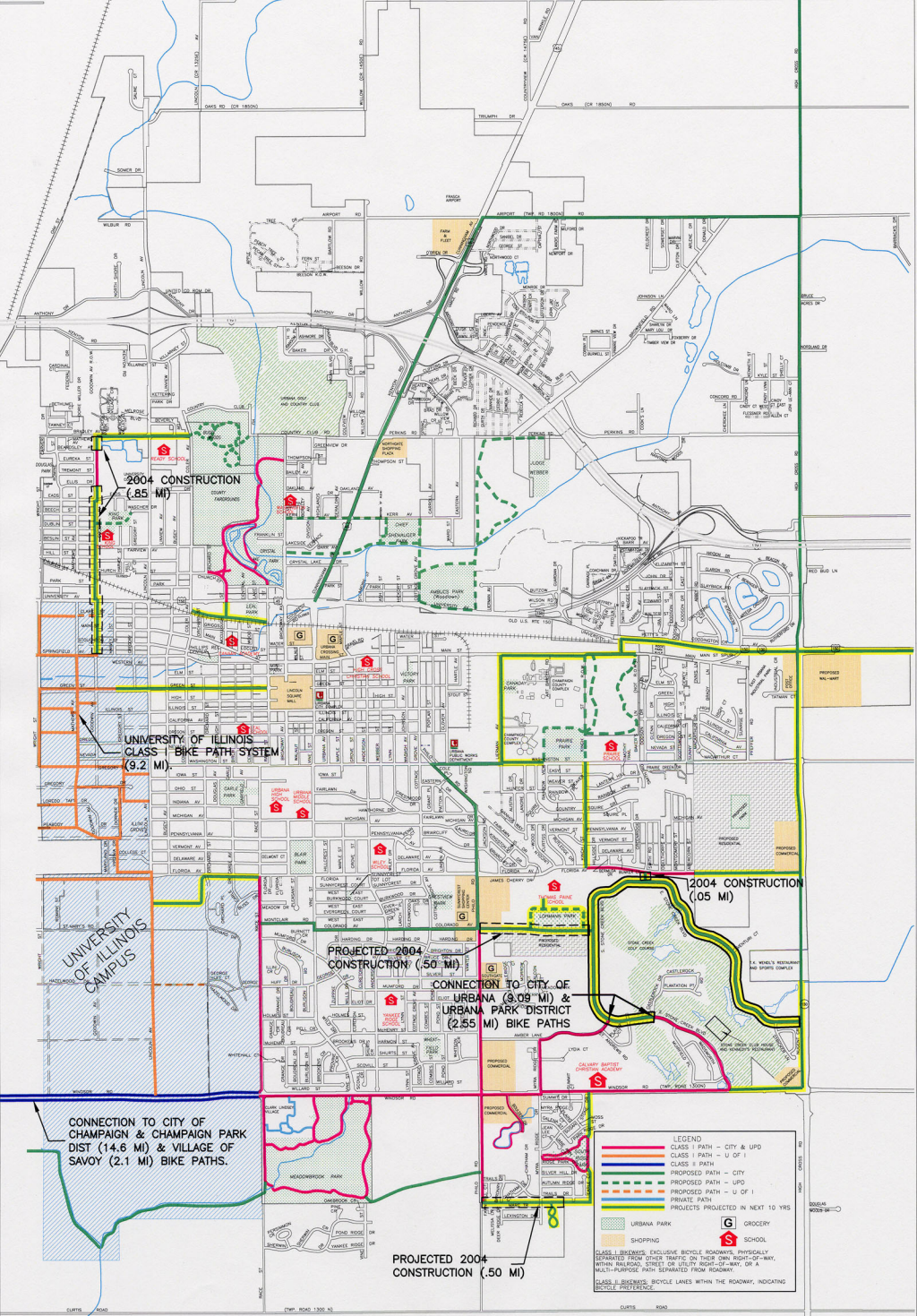


FIGURE R
BIKE PATH SYSTEM

NORTH
SCALE
1"=2100'

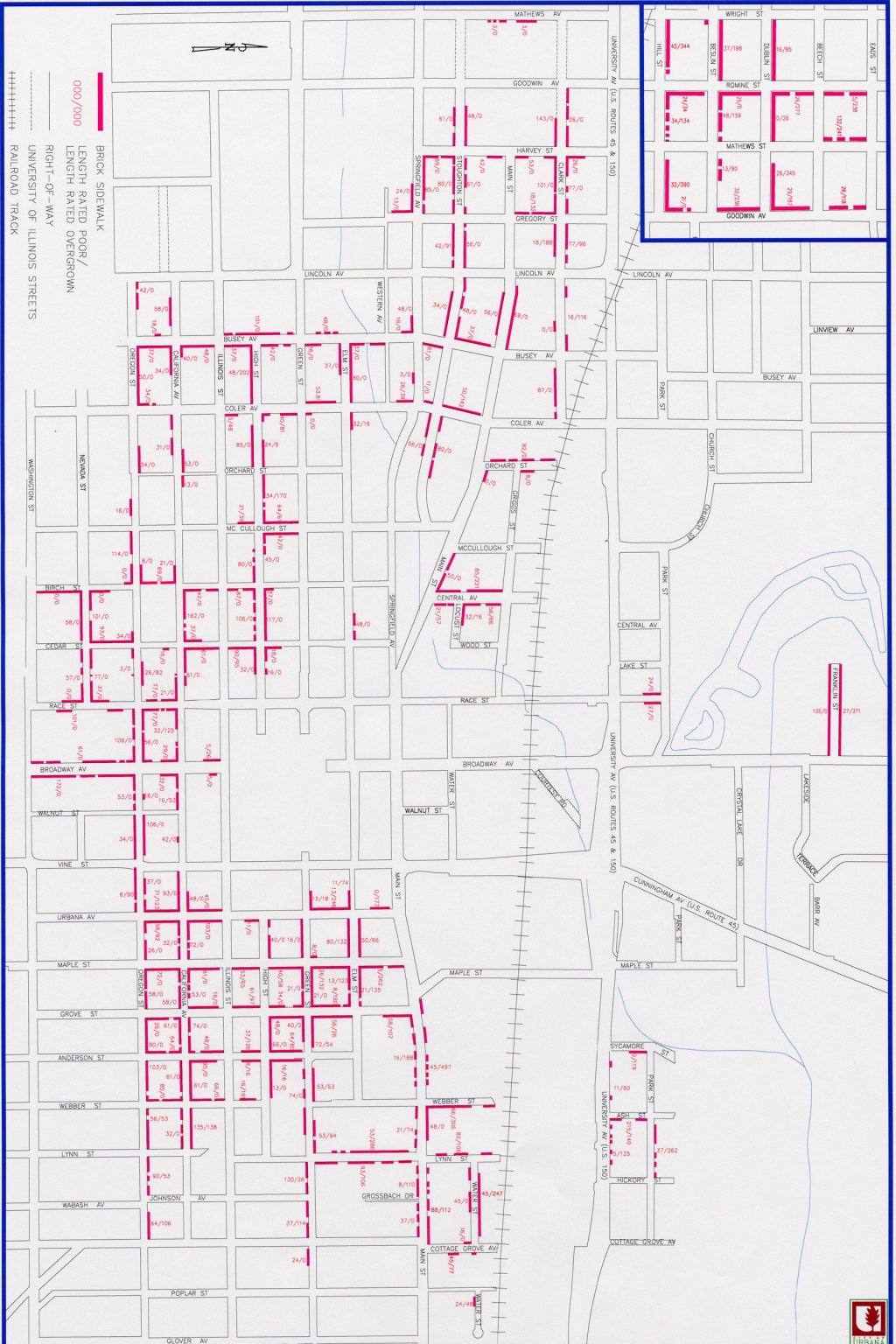


FIGURE Z
EXISTING BRICK SIDEWALKS

