

- RIGHT-OF-WAY
- - - PRIVATE ROAD
- ILLINOIS STREETS
- RAILROAD TRACK
- CITY LIMITS

CITY OF URBANA ENGINEERING DIVISION 2004 CONSTRUCTION

- ### LEGEND
- MAJOR BRICK SIDEWALK REPAIRS/REPLACEMENT
 - SLURRY SEAL/MICRO PAVING
 - RESURFACING/RECONSTRUCTION/CONSTRUCTION
 - SANITARY SEWER REPAIRS
 - SANITARY SEWER LINING
 - STORM SEWER INSTALLATION/REPAIRS
 - STORM SEWER LINING
 - BIKE PATH CONSTRUCTION
 - PAVEMENT PATCHING
 - TRAFFIC SIGNAL INSTALLATION/MODERNIZATION/UPGRADING
 - STREETSCAPE/MINI PARKS/ENTRY WAYS

04/20/04



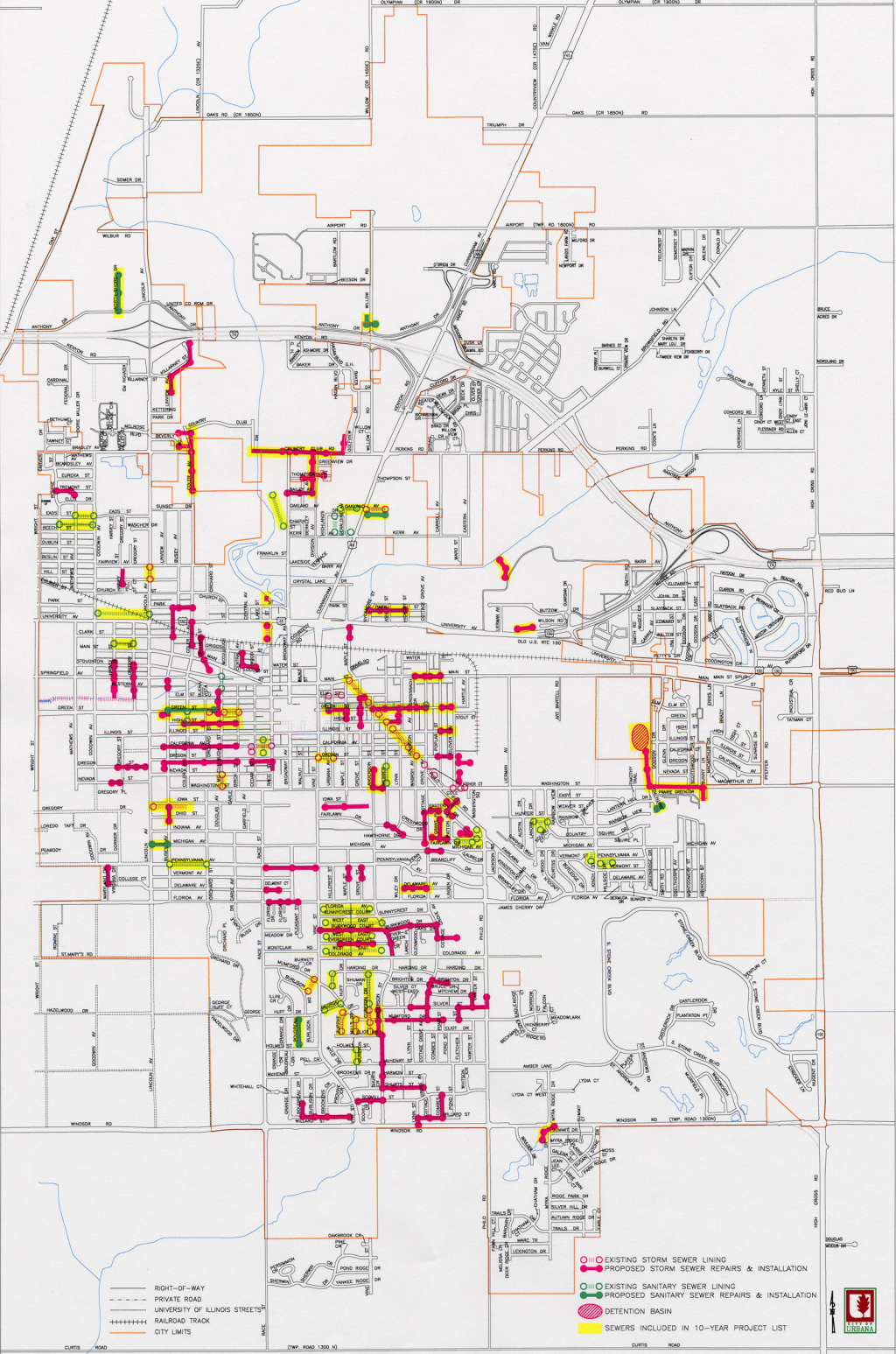


FIGURE A
PROPOSED SEWER PROJECTS



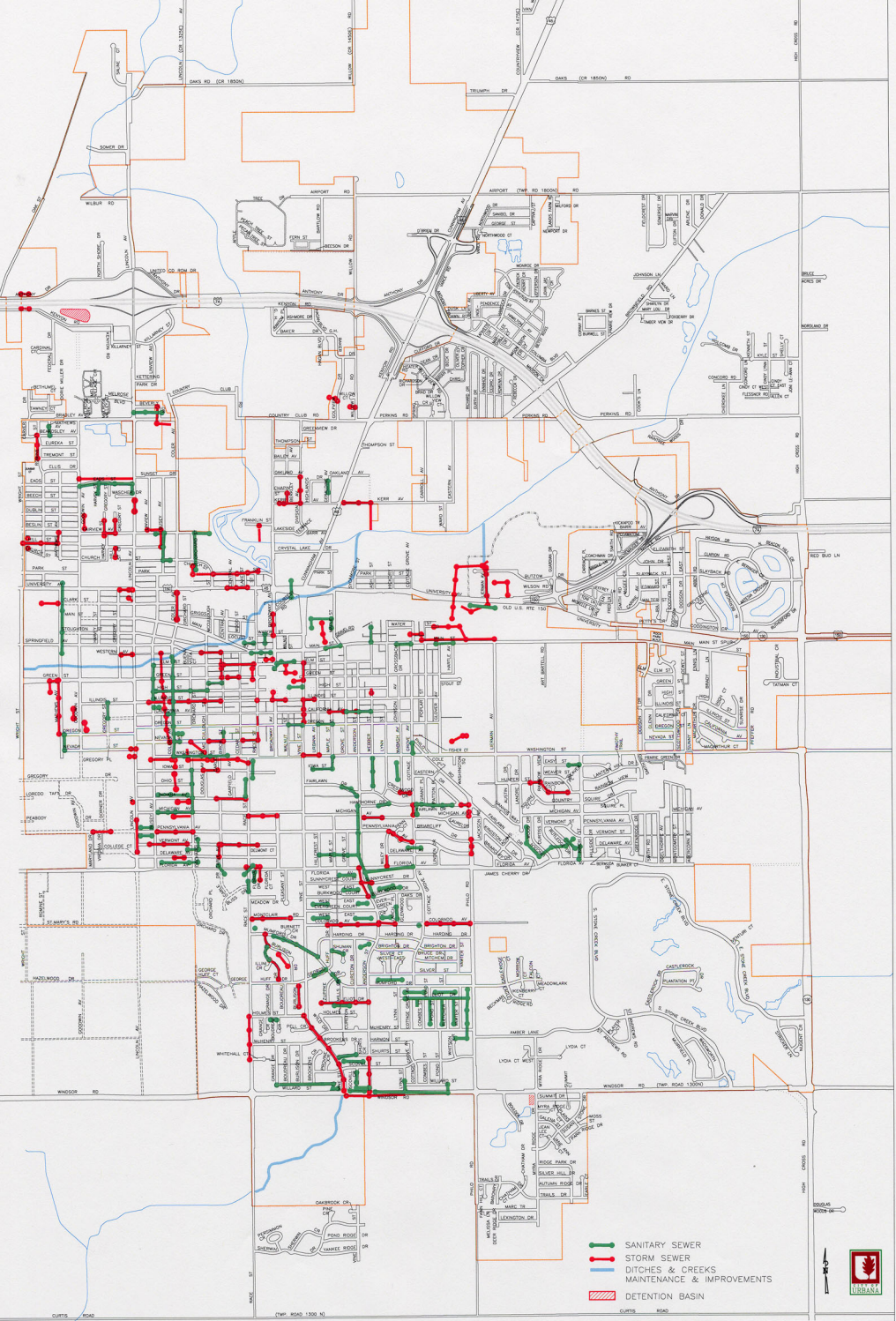


FIGURE B
SEWER PROJECTS COMPLETED SINCE 1981

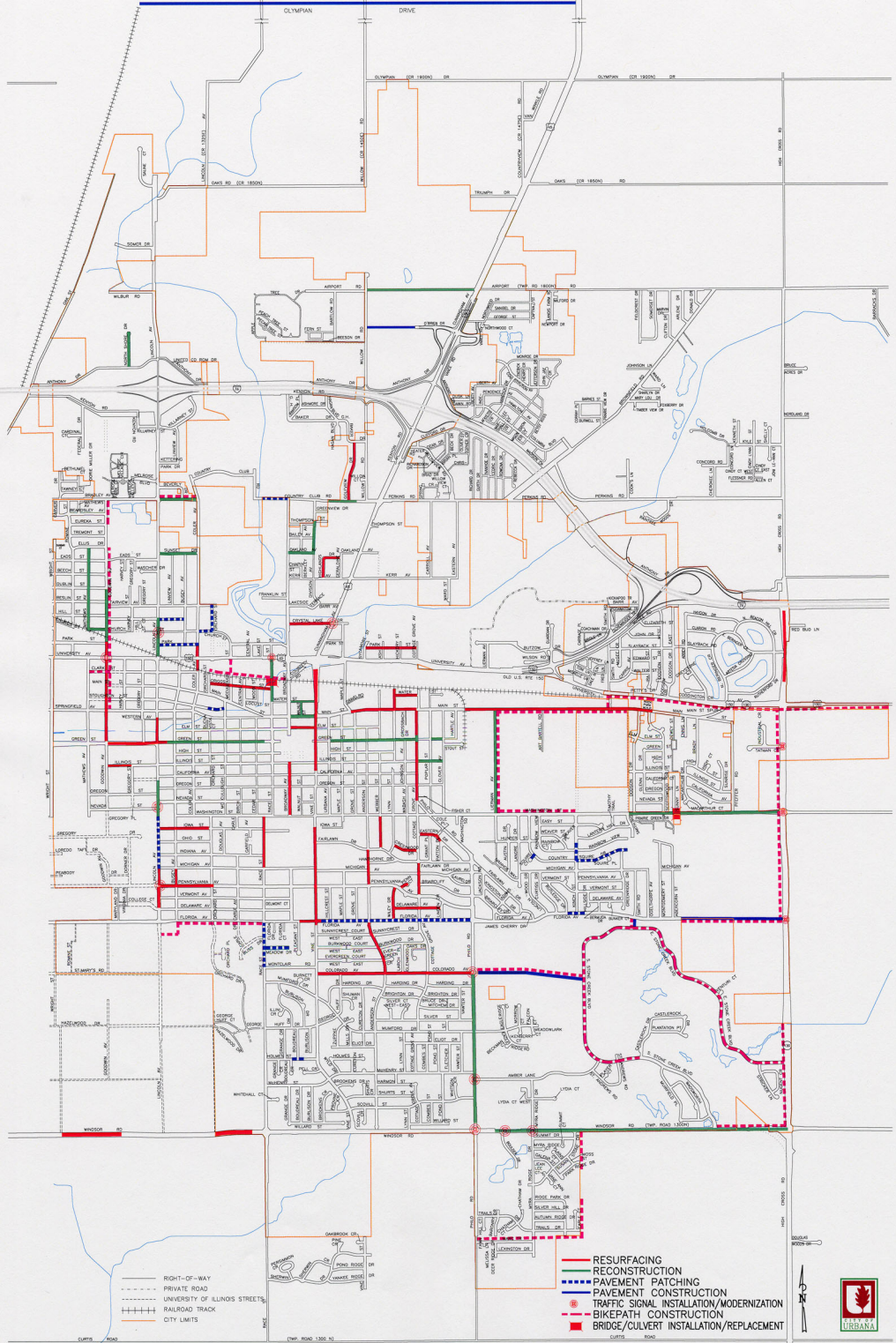


FIGURE C
PROJECTED TEN YEAR MAJOR STREET RESURFACING, RECONSTRUCTION,
CONSTRUCTION, TRAFFIC SIGNALS, BIKEPATHS, & BRIDGES

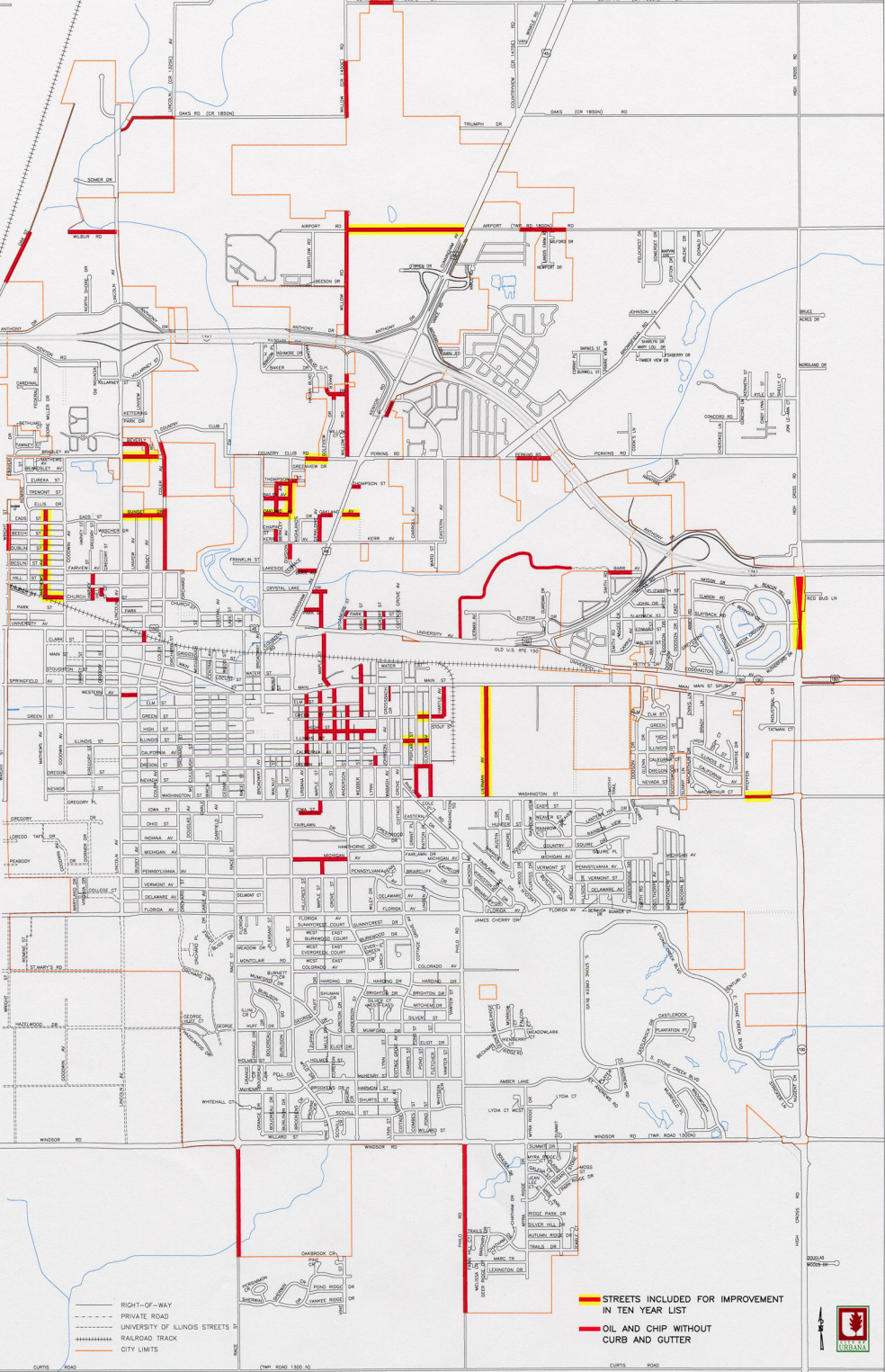


FIGURE D
OIL AND CHIP STREETS WITHOUT CURB AND GUTTER



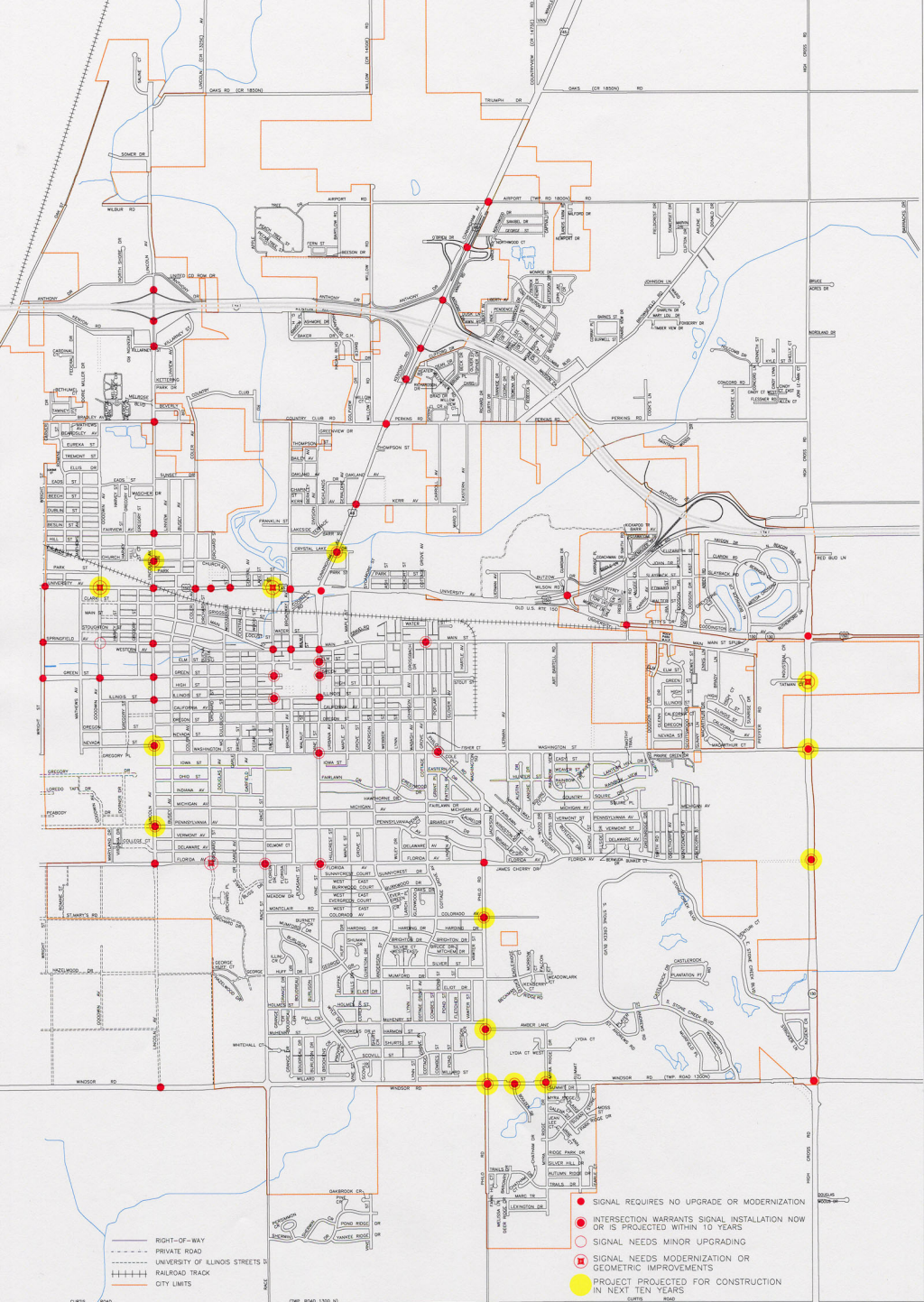


FIGURE E
TRAFFIC SIGNALS

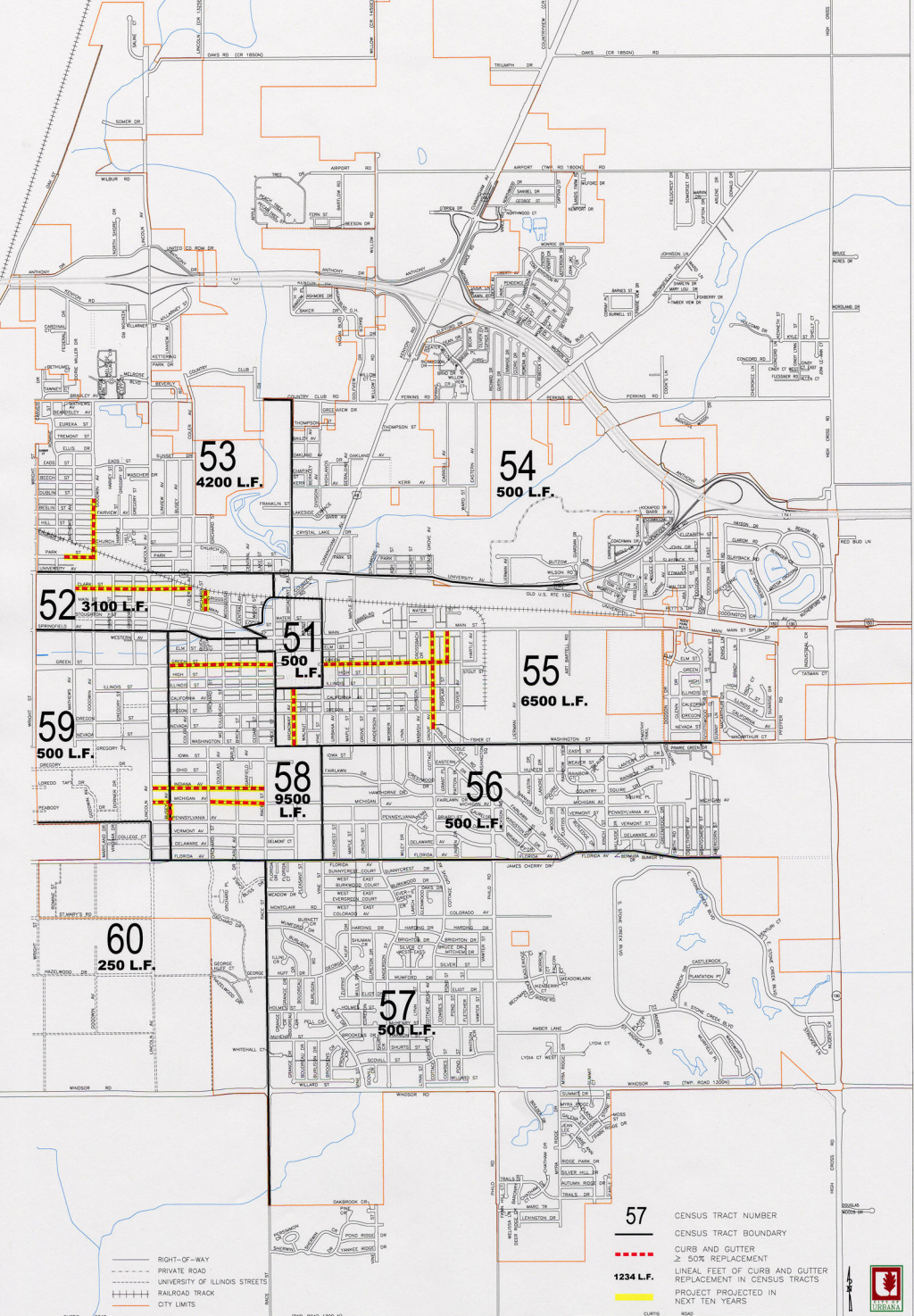


FIGURE F
MAJOR CURB AND GUTTER MAINTENANCE



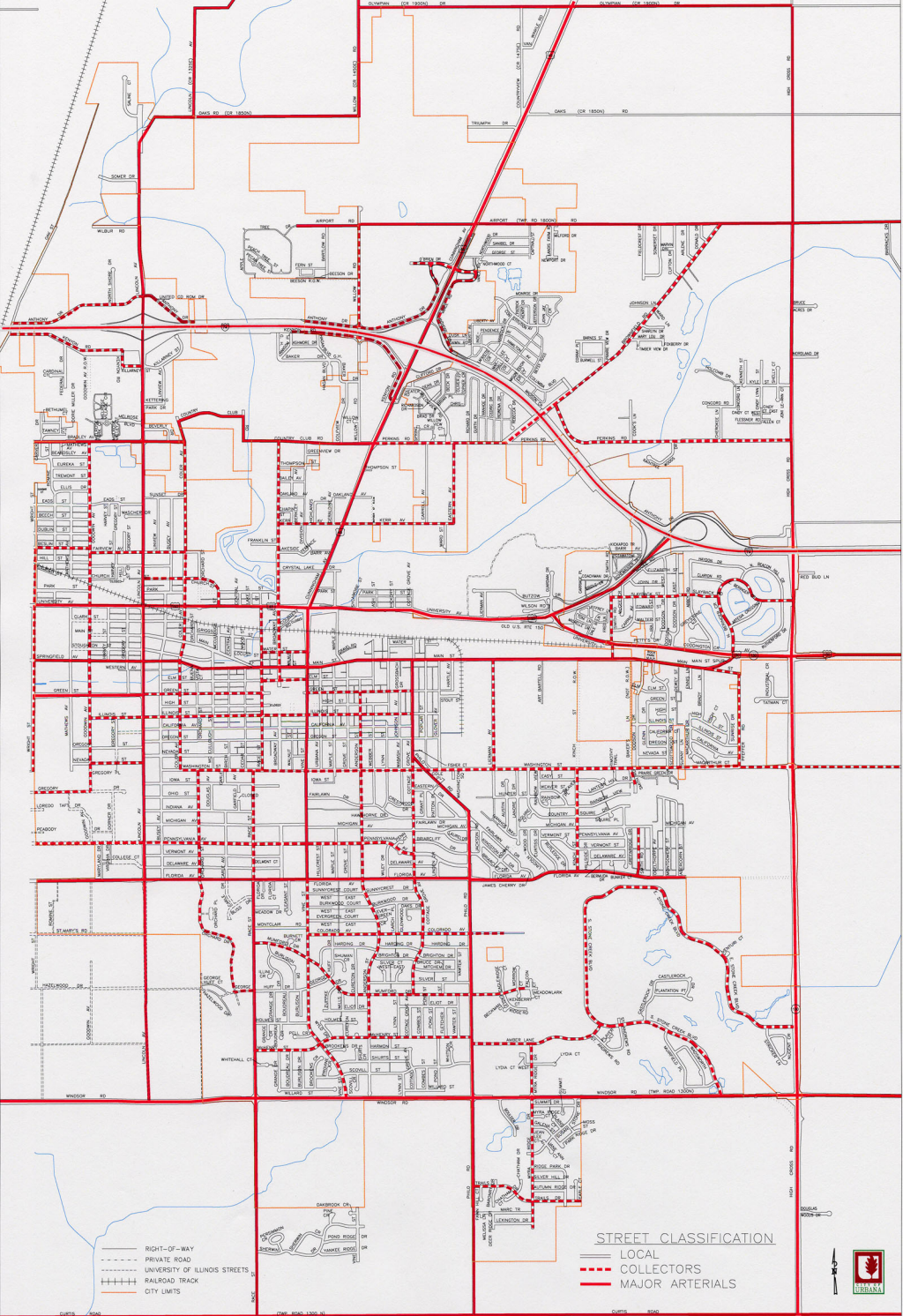


FIGURE G
ARTERIAL AND COLLECTOR STREETS

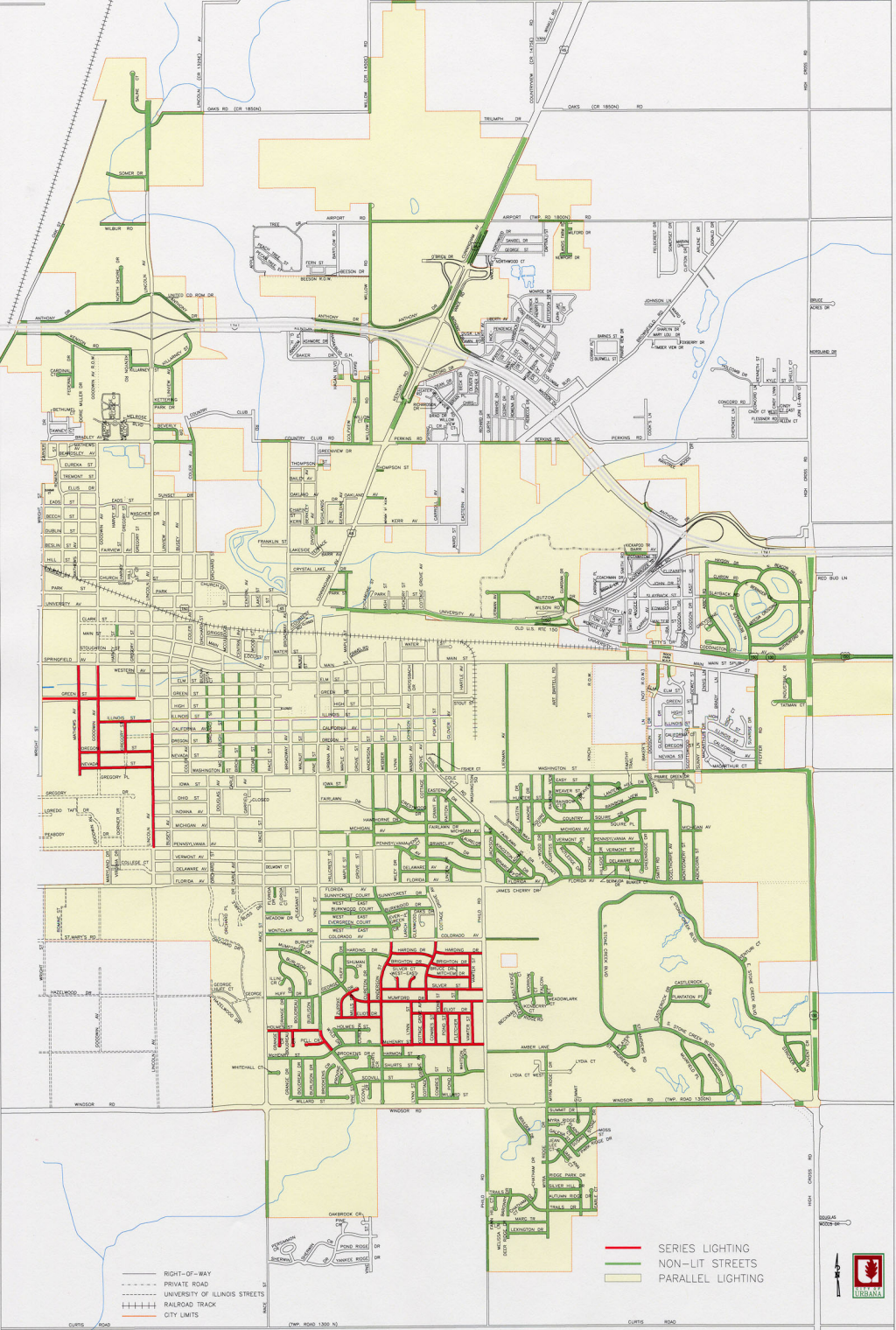
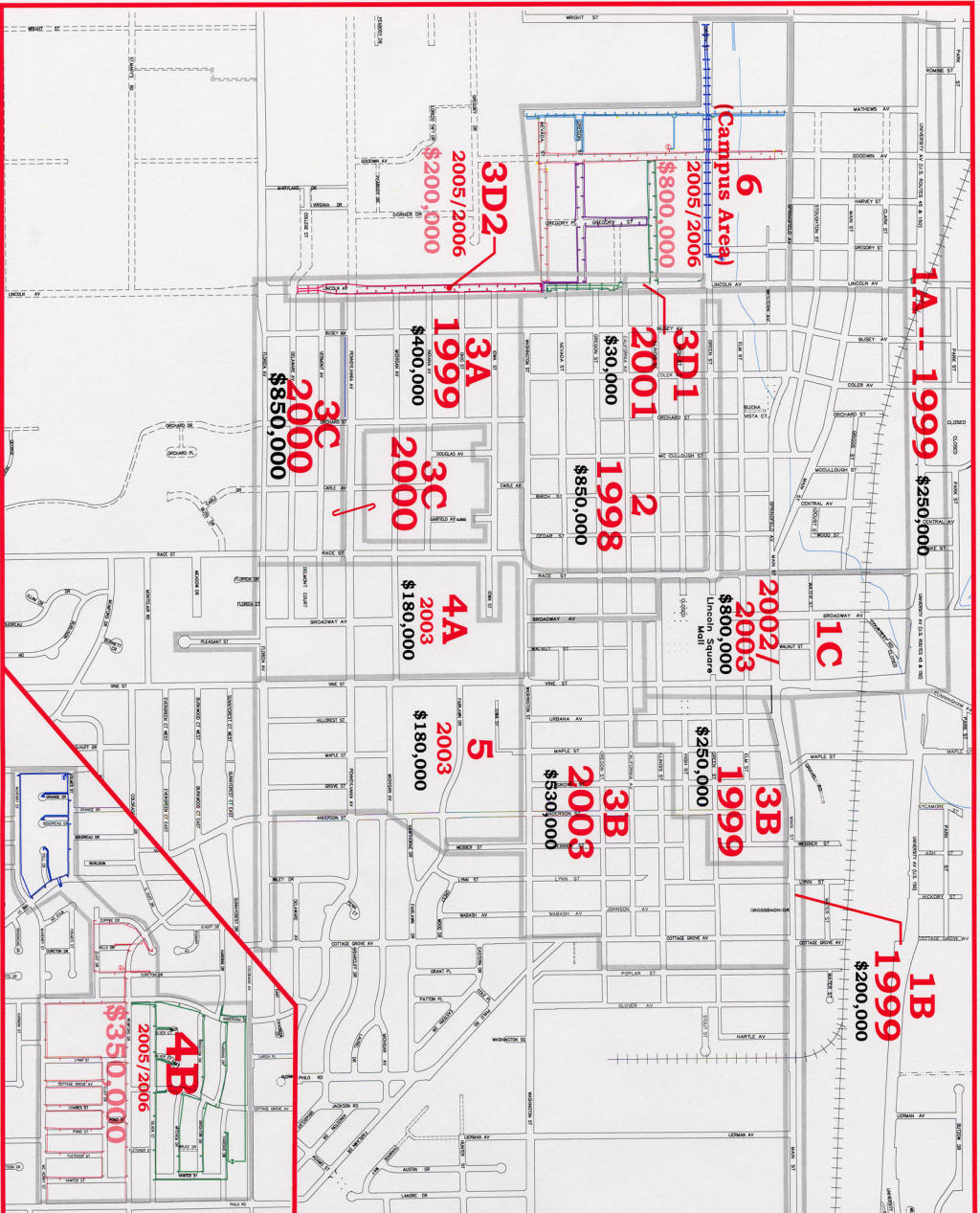


FIGURE H
STREET LIGHTING



**ENGINEERING
DIVISION
CAPITAL
IMPROVEMENT
PLAN**

LEGEND:

- RIGHT-OF-WAY
- PRIVATE ROAD OR INACCESSIBLE R.O.W.
- UNIVERSITY OF ILLINOIS STREETS
- RAILROAD TRACK
- EXISTING SERIES LIGHTING CIRCUIT
- AREA BOUNDARY
- 6A** AREA NUMBER
- \$100,000** COMPLETED PROJECT COST
- \$100,000** ESTIMATED PROJECT COST

**SERIES LIGHTING
REPLACEMENT
PRIORITIES
LOCATION MAP**

NOTE: COSTS HAVE BEEN REVISIED TO REFLECT BIDS & INCLUDE DESIGN COSTS

FIGURE I
SERIES LIGHTING REPLACEMENT PRIORITIES LOCATION MAP

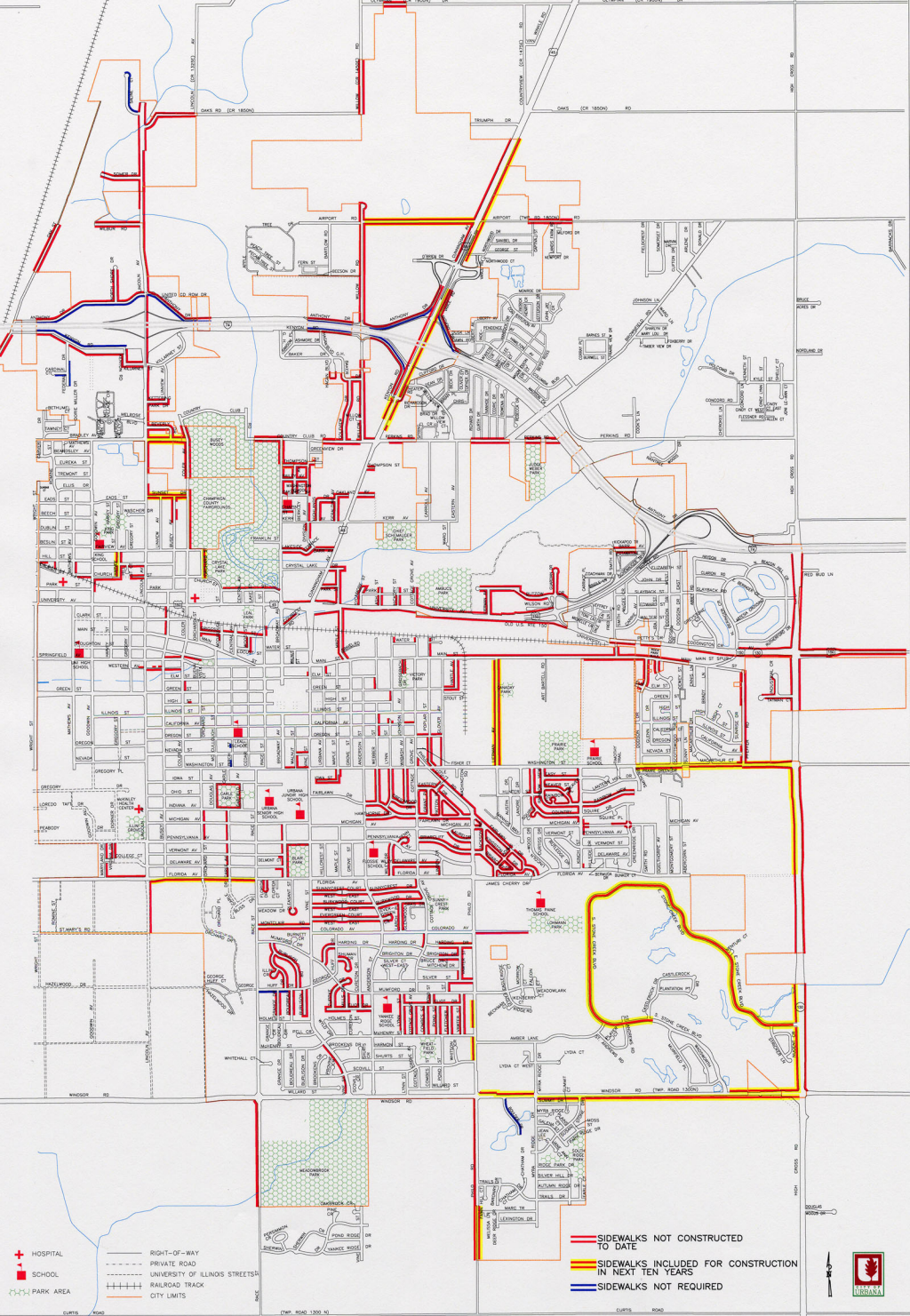


FIGURE J
SIDEWALK CONSTRUCTION

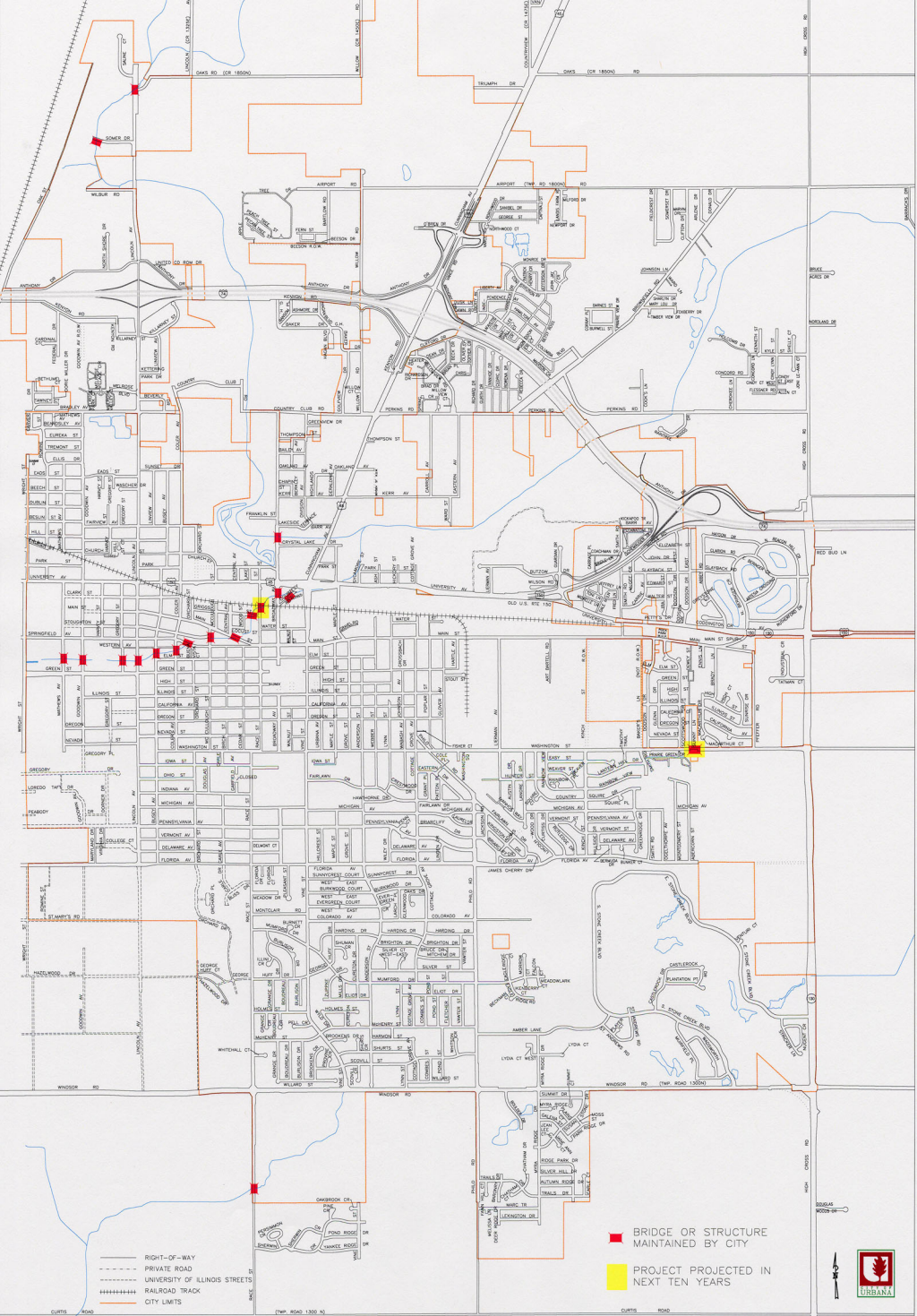


FIGURE L
BRIDGES AND STRUCTURES

BRICK SIDEWALK PROGRAM

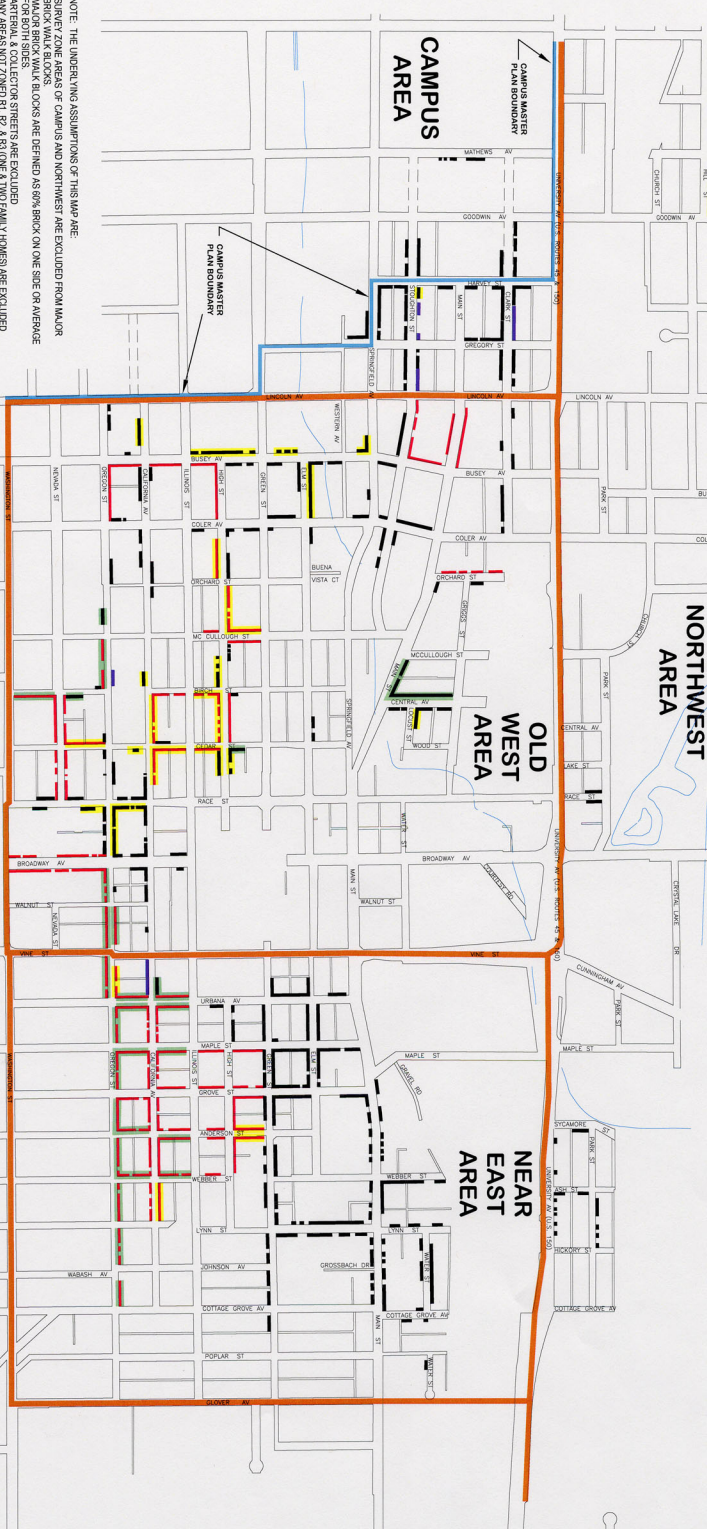
NORTHWEST AREA

OLD WEST AREA

NEAR EAST AREA

CAMPUS AREA

BRICK SIDEWALK FACTS	
TOTAL LENGTH:	Approximately 59,000 linear feet (not including sections at intersection corners)
WIDTH:	Varies from 4.5 feet to 4.75 feet.
LOCATION:	Various blocks from Wright Street to Glover Avenue, Erie Street (extended) to Washington Street.
CONDITION:	Original survey found approximately 50 % overgrown with grass and weeds or rated in poor condition (i.e. cracks missing, 2' or greater offsets, etc.). Majority of the balance is rated as fair condition (offsets up to 2", 1/2 dips or humps, spreading joints).
SERVICE AREAS:	Varies from single-family to high-density.
NOTE:	These figures do not include "StreetScope" walkways.



- NOTE: THE UNDERLYING ASSUMPTIONS OF THIS MAP ARE:
1. SERVICE ZONE AREAS OF CAMPUS AND NORTHWEST ARE EXCLUDED FROM MAJOR
 2. MAJOR BRICK WALK BLOCKS ARE DEFINED AS 60% BRICK ON ONE SIDE OR AVERAGE
 3. FOR BOTH SIDES
 4. ANY AREAS NOT ZONED R-1, R-2 & R3 (ONE & TWO FAMILY HOMES) ARE EXCLUDED

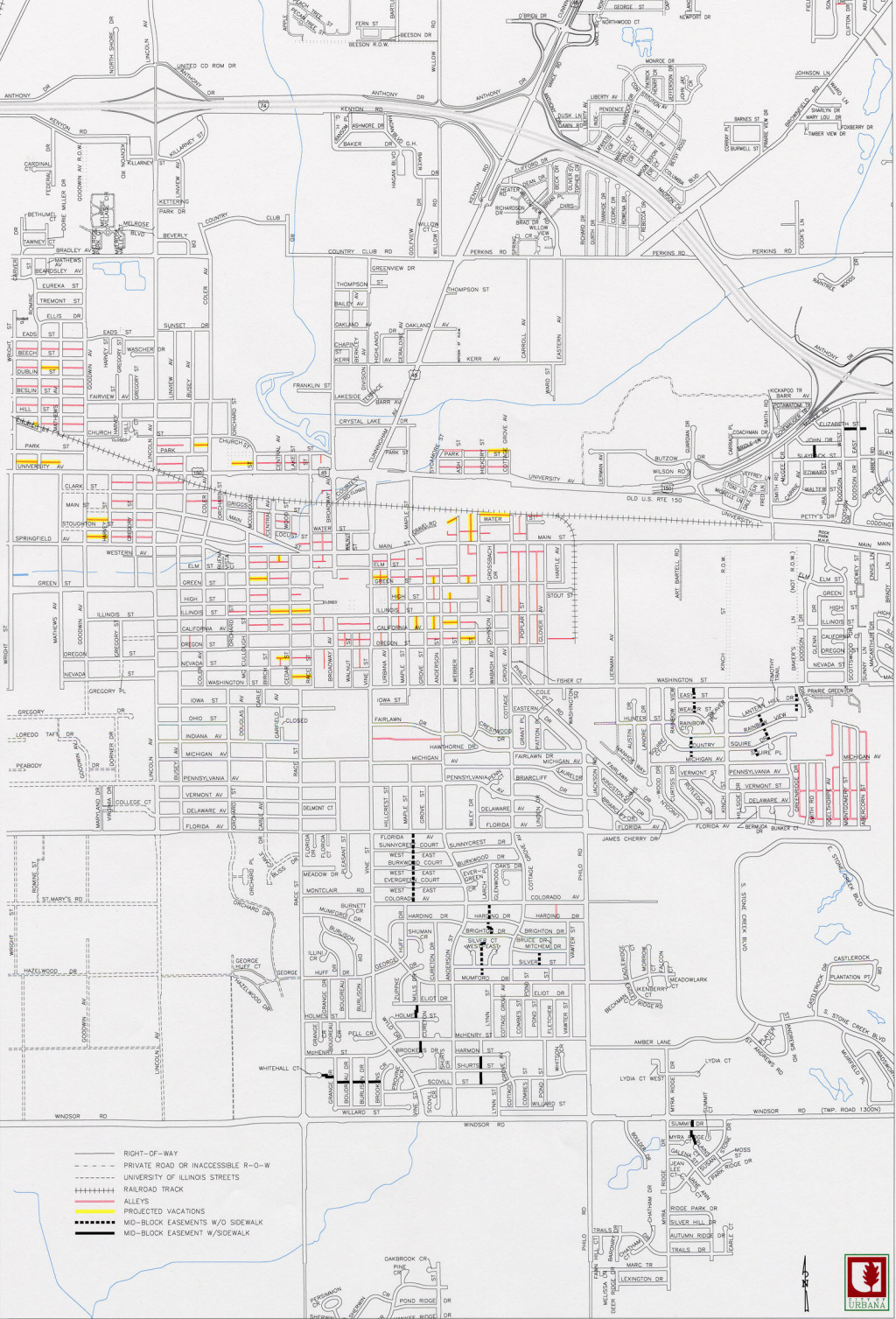
- MAJOR BRICK WALK BLOCKS BY CITY ORGANIZED BRICK SIDEWALKS MAY BE REPAIRED OR REPLACED WITH CONCRETE ONLY IF PROPERTY OWNERS DOES NOT WANT TO KEEP IT AS A BRICK SIDEWALK.
- MINOR BRICK WALK BLOCKS BY CITY ORGANIZED BRICK SIDEWALKS ARE TO BE REPAIRED OR RECONSTRUCTED WITH BRICK. PROPERTY OWNERS MAY REQUEST THE CITY COUNCIL TO MAKE THIS REPAIRMENT TO AVOID STAIN OR REDUNDANT SIDEWALKS. MINORS ALSO BE REPAIRED BY A PRIVATE CONTRACTOR.

- RECONSTRUCTION ON REPAIRS COMPLETED IN BRICK.
- AREAS PROJECTED ON MAPS FROM CONCEPTS DATED 2004 OR 2005.
- BRICK SIDEWALKS COMPLETED TO CONCEPT.

SCALE 1" = 700'

FIGURE M
EXISTING BRICK SIDEWALKS

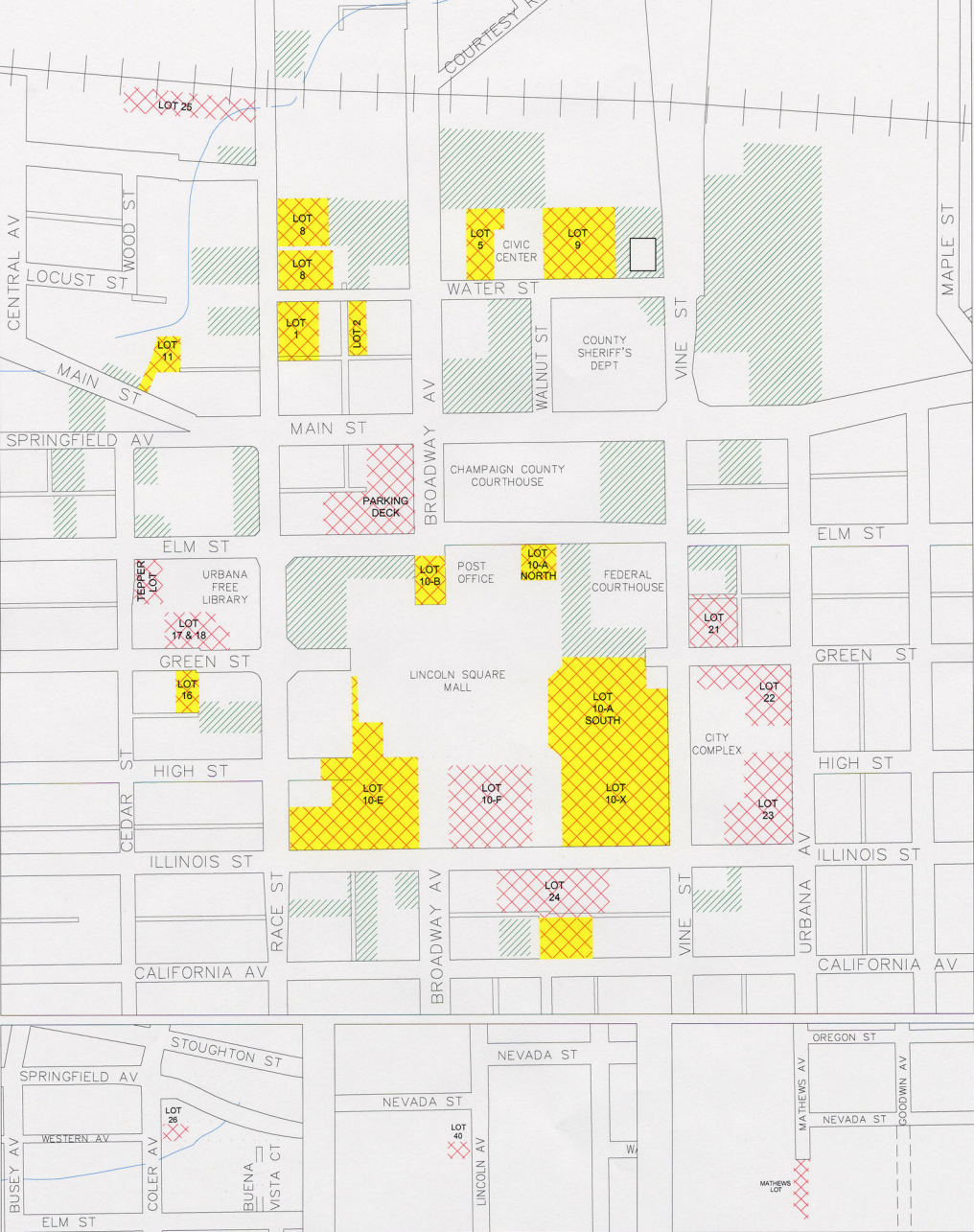





- RIGHT-OF-WAY
- - - PRIVATE ROAD OR INACCESSIBLE R-O-W
- - - UNIVERSITY OF ILLINOIS STREETS
- RAILROAD TRACK
- ALLEYS
- PROJECTED VACATIONS
- MID-BLOCK EASEMENTS W/O SIDEWALK
- MID-BLOCK EASEMENT W/SIDEWALK

FIGURE N
ALLEYS & MID-BLOCK EASEMENTS





CITY OF URBANA, ILLINOIS DOWNTOWN PARKING LOTS

 PUBLIC PARKING LOTS

 PRIVATE PARKING LOTS


 PROJECTED RECONSTRUCTION/RESURFACING
IN NEXT 10 YEARS

FIGURE O
DOWNTOWN PARKING LOTS



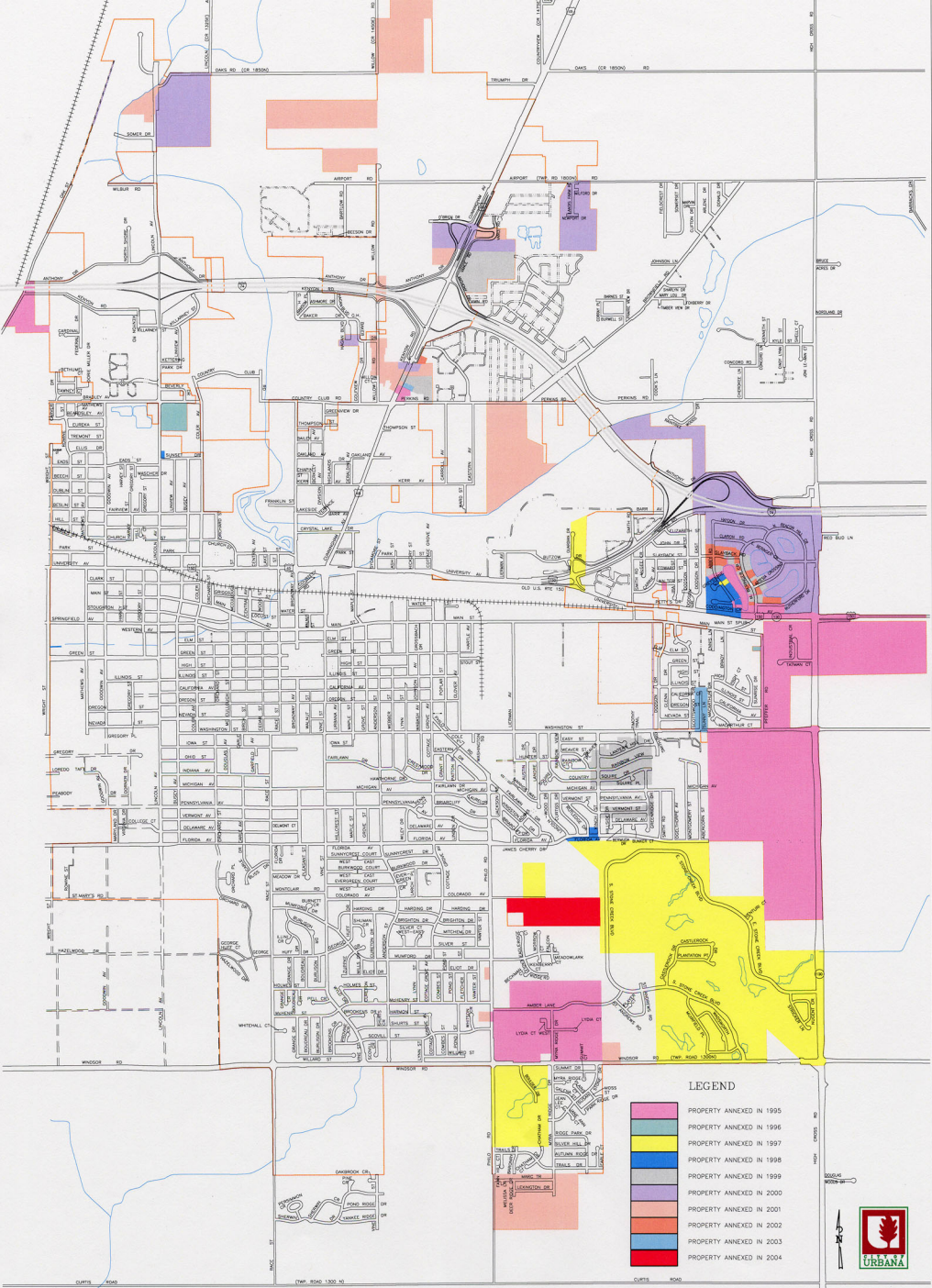


FIGURE P
ANNEXATION MAP

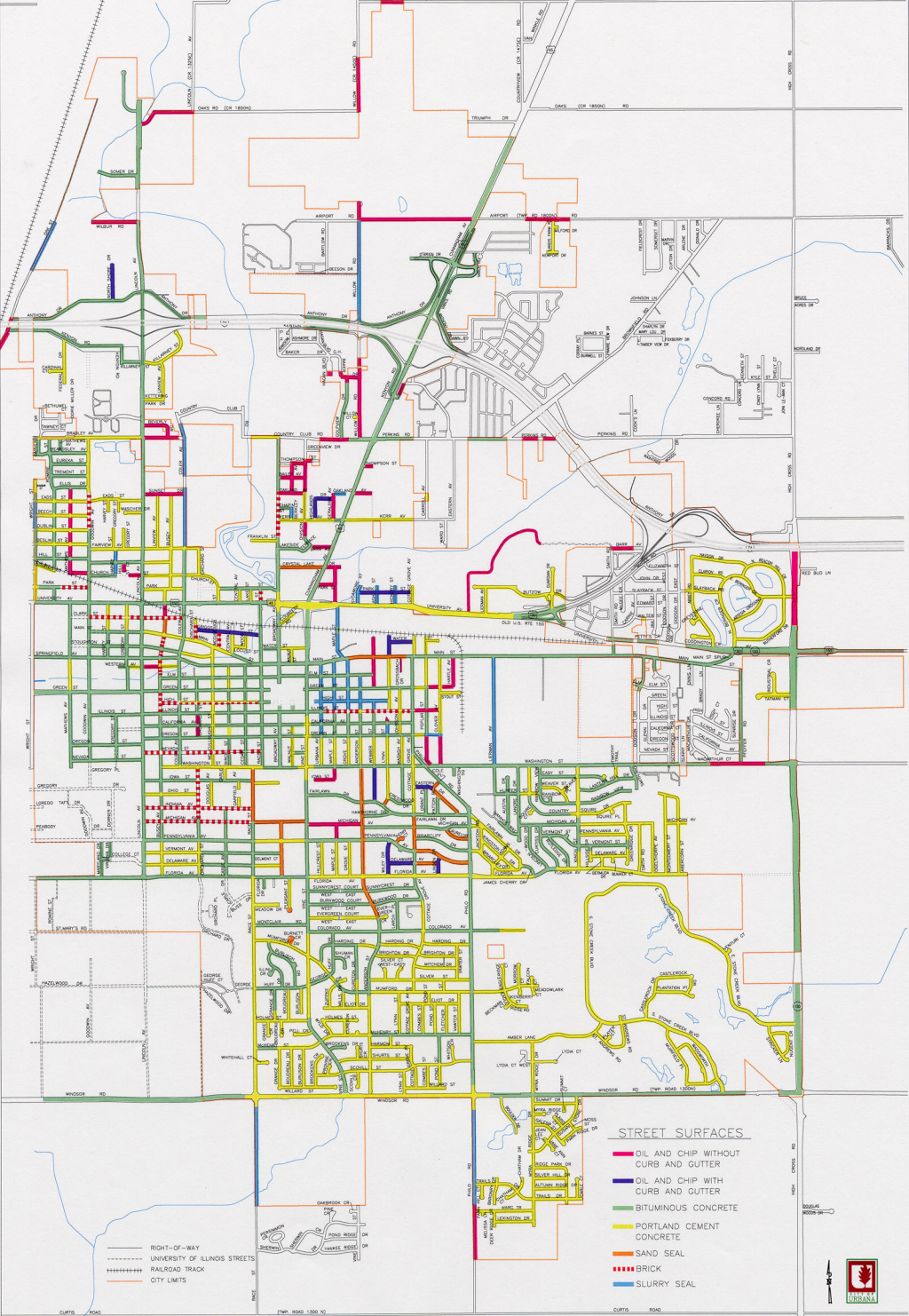


FIGURE Q
EXISTING STREET SURFACES



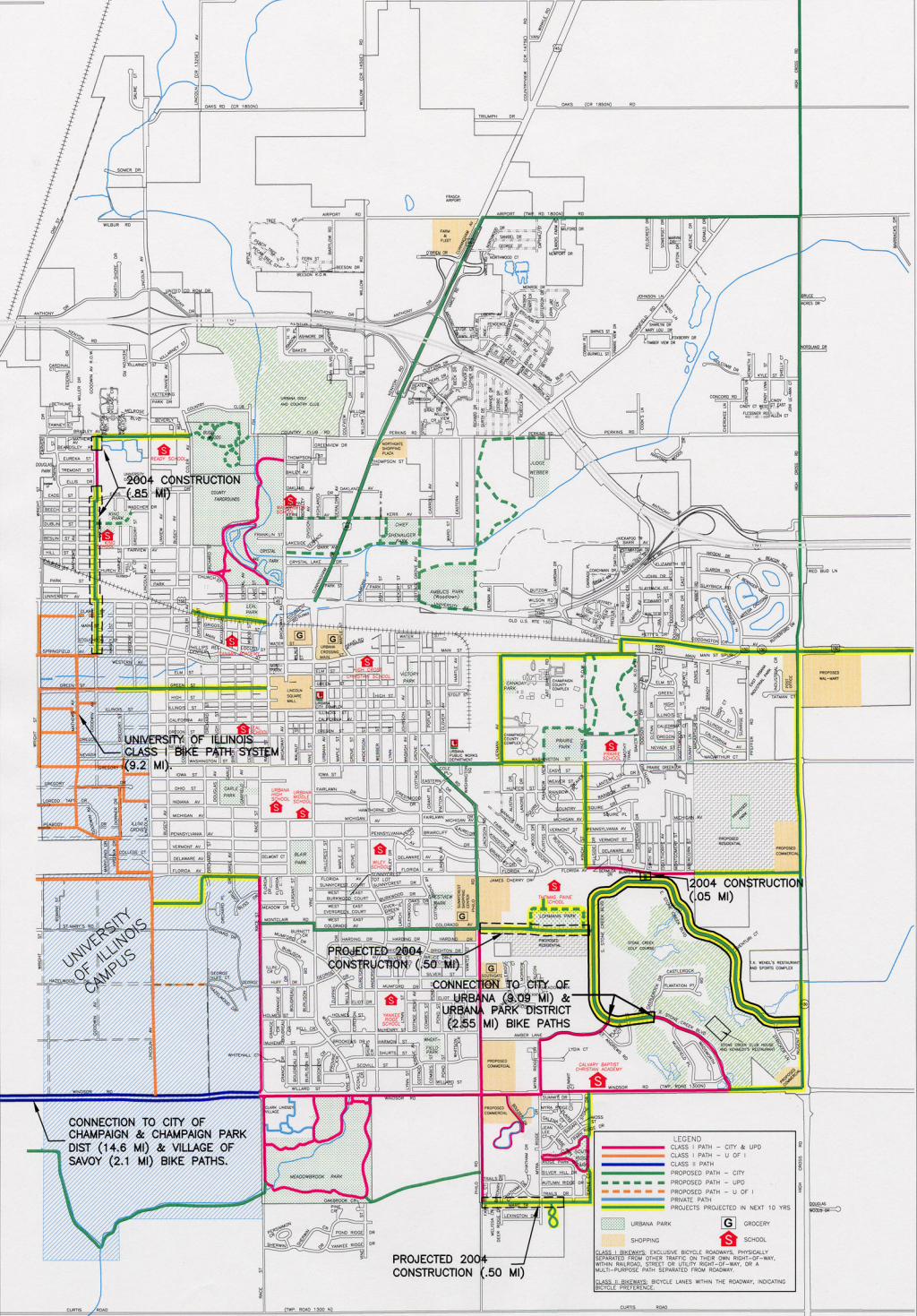


FIGURE R
BIKE PATH SYSTEM

NORTH
SCALE
1"=2100'

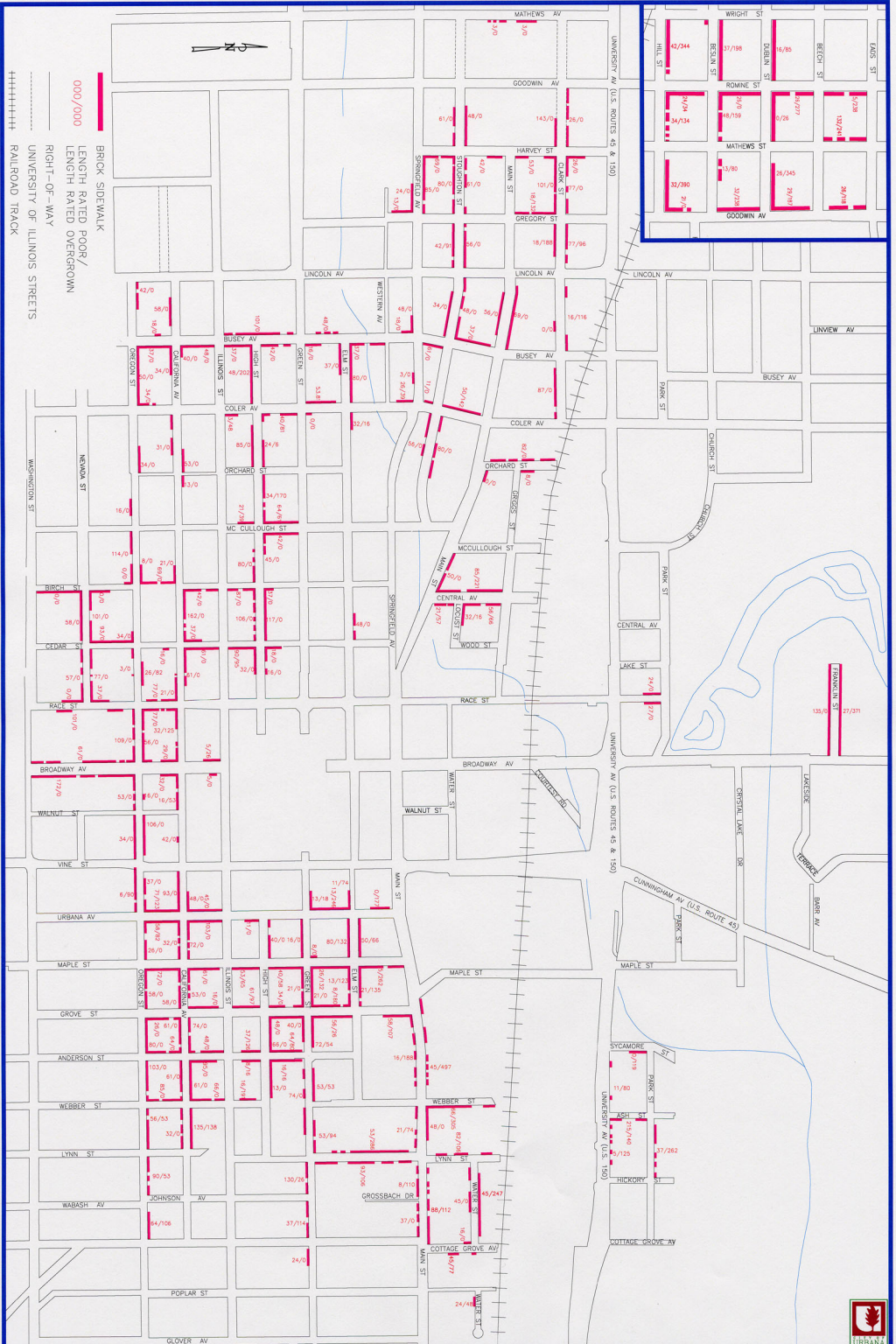


FIGURE Z
EXISTING BRICK SIDEWALKS

